



BAY VIEW TERRACE LANDSCAPE CONCEPT

16TH AUGUST 2023

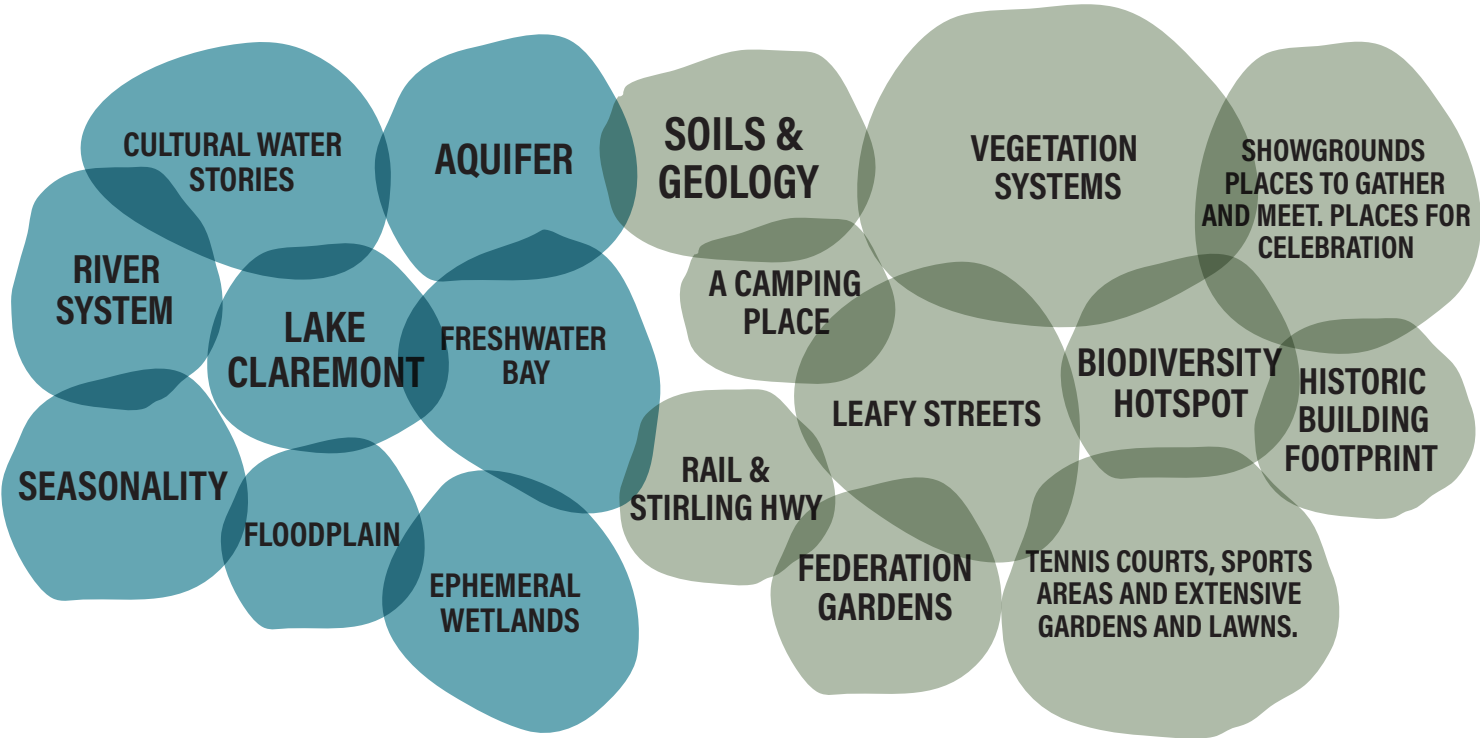
DESIGN APPROACH

THE ELEMENTS

THEMES

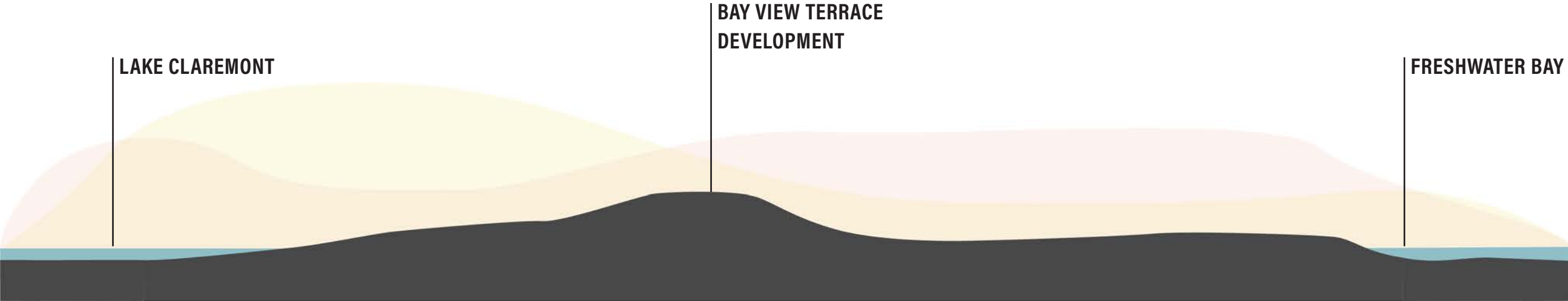


TOPICS & STORIES



DESIGN APPROACH

WATER

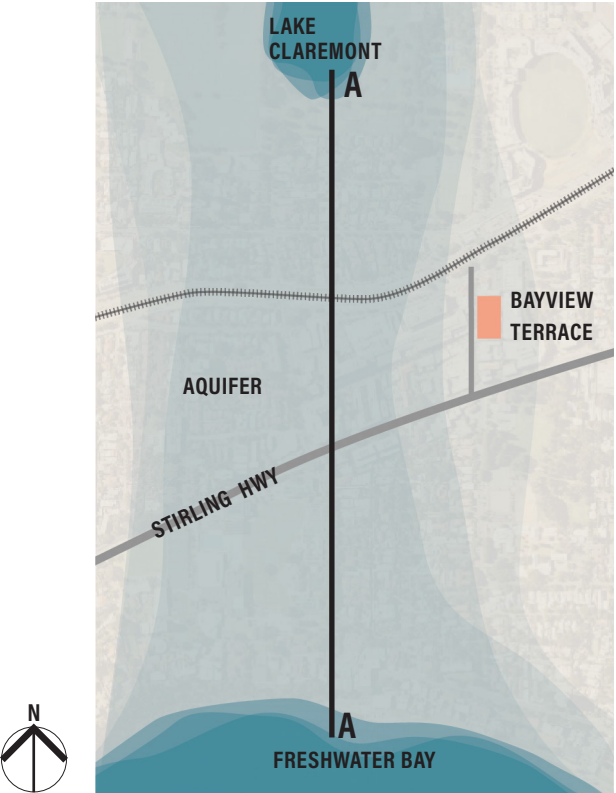


INDICATIVE SECTION A

NOT TO SCALE

The site is situated on a high point between Lake Claremont and Freshwater Bay, at the nexus of the wetland and river systems. In the time before the landscape was developed, the site would have had far reaching views across both water bodies.

There is an opportunity to reestablish connections between the site and these ancient water systems by enhancing views and by paying homage to what came before through the planting and the use of water within the landscape elements.



LOCATION PLAN

NOT TO SCALE

DESIGN APPROACH

THE LEAFY SUBURB



FIGURE 1. PRECEDENT IMAGE. FEDERATION ERA HOUSE AND GARDEN IN CLAREMONT.



FIGURE 2. PRECEDENT IMAGE. FEDERATION ERA HOUSE AND GARDEN IN CLAREMONT.



FIGURE 3. PRECEDENT IMAGE. LEAFY GREEN STREETS OF CLAREMONT.

Claremont is known for its leafy green streets and picturesque landscapes. The well established gardens feature eclectic plant palletes that mix native species with exotic and heritage cultivars, complimenting the federation era architecture of the built landscape.

There is an opportunity to celebrate the unique character of Claremont through the use of picturesque design principles within the site.

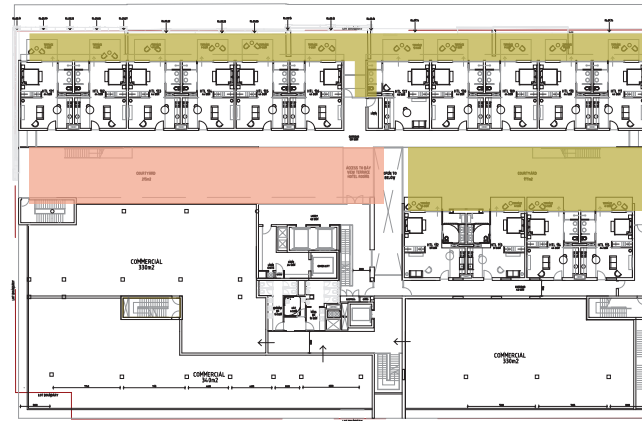
THEMES

IMPLEMENTATION

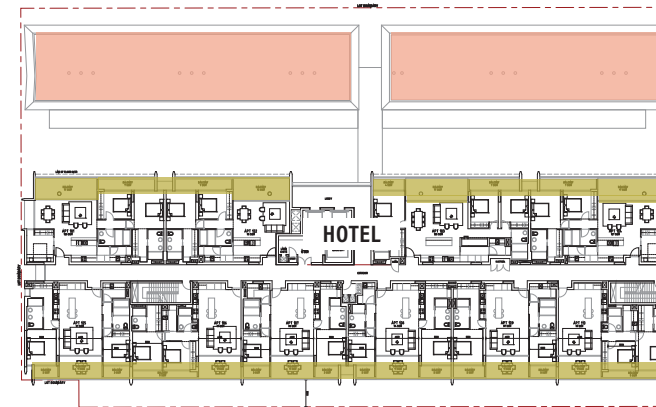
GROUND FLOOR



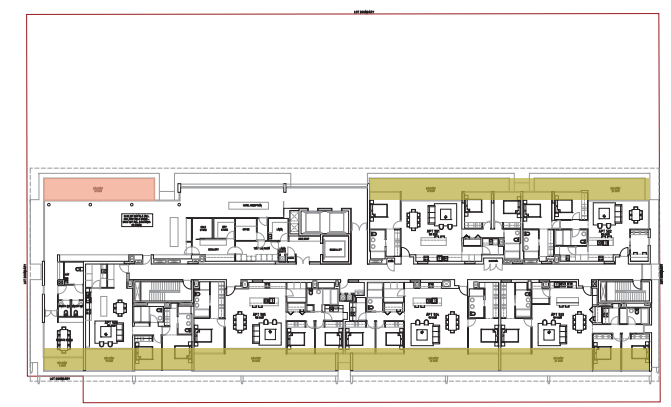
LEVEL ONE



LEVEL THREE



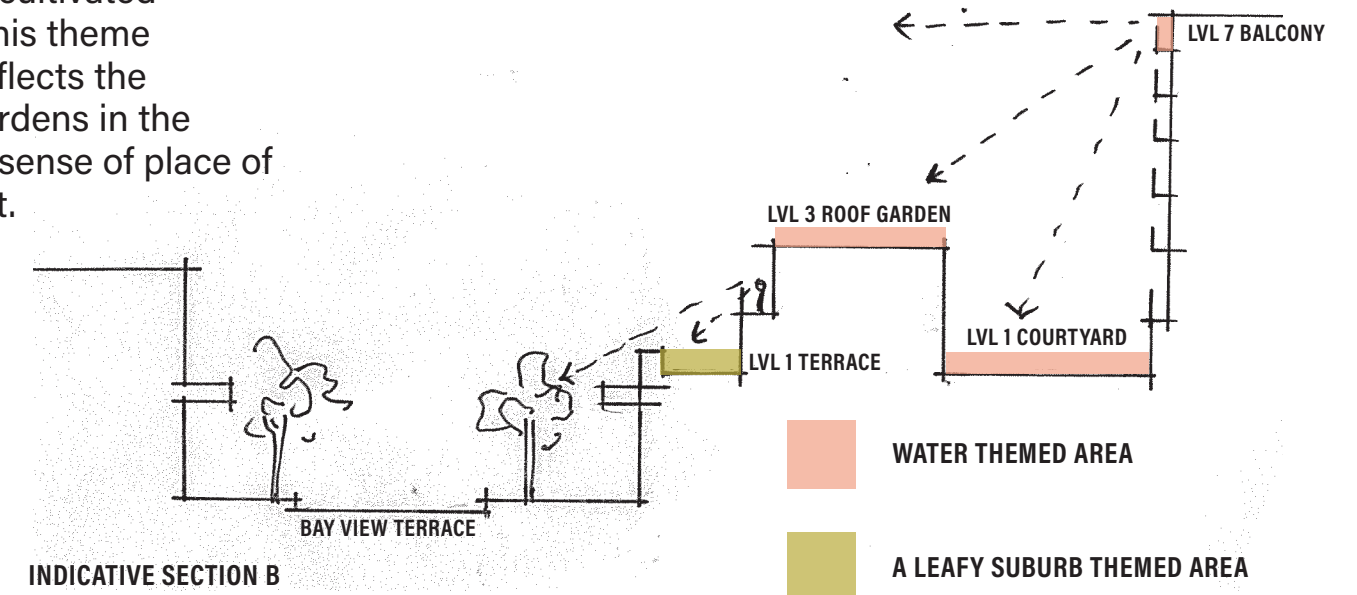
LEVEL SEVEN



IMPLEMENTATION PLAN

The landscape design is intended to connect with, and speak to the character of the surrounding landscape. The north-south building aspect aligns with the directional flow of the aquifer, draining freshwater from Lake Claremont into Freshwater Bay. As such, implementation of the water theme is proposed for the level one courtyard, level three roof top gardens and level seven balcony, connecting to distant views of the Swan Coastal Plain and holding key points when viewed from above.

A leafy suburb theme connects the level one terraces to the character of the cultivated streetscape below. The use of this theme in private spaces of the hotel reflects the gardenesque style of private gardens in the neighbourhood, enhancing the sense of place of the Hotel as a part of Claremont.



LANDSCAPE PRECEDENTS

THE LEAFY SUBURB

The following examples of Federation houses situated in Claremont illustrate key gardenesque elements of the era that could be incorporated into the Bay View Terrace green spaces.

Key examples include:

- Specimen planting as entry statements and focal points
- Hardy shrubs and climbers in garden beds adjacent to walls and terraces to anchor the built form in its surroundings
- Clustering pot plants, plinths and urns on verandas and around entry ways



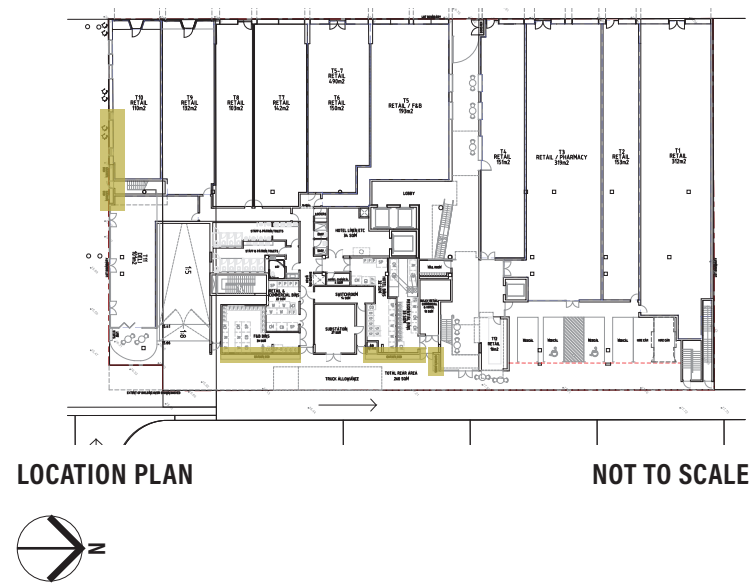
FIGURE 4. PRECEDENT IMAGE. FEDERATION ERA HOUSE AND GARDEN IN CLAREMONT.

Hardy shrubs such as rosemary are planted in the garden bed adjacent to the house to anchor the built form. Plinths and pots have been used to enhance the entry statement.

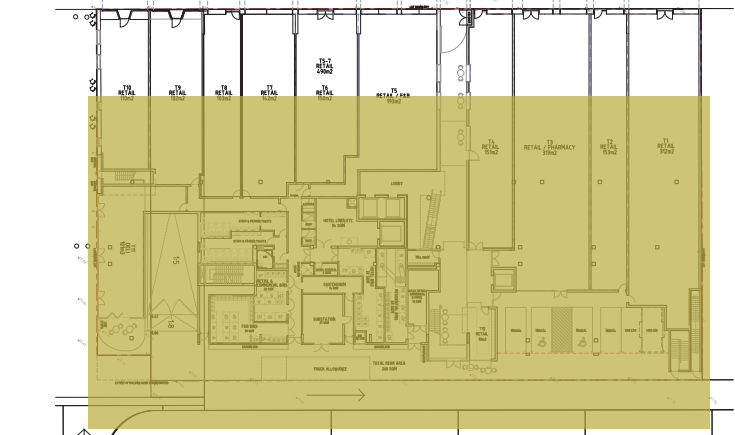
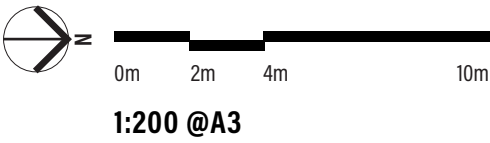
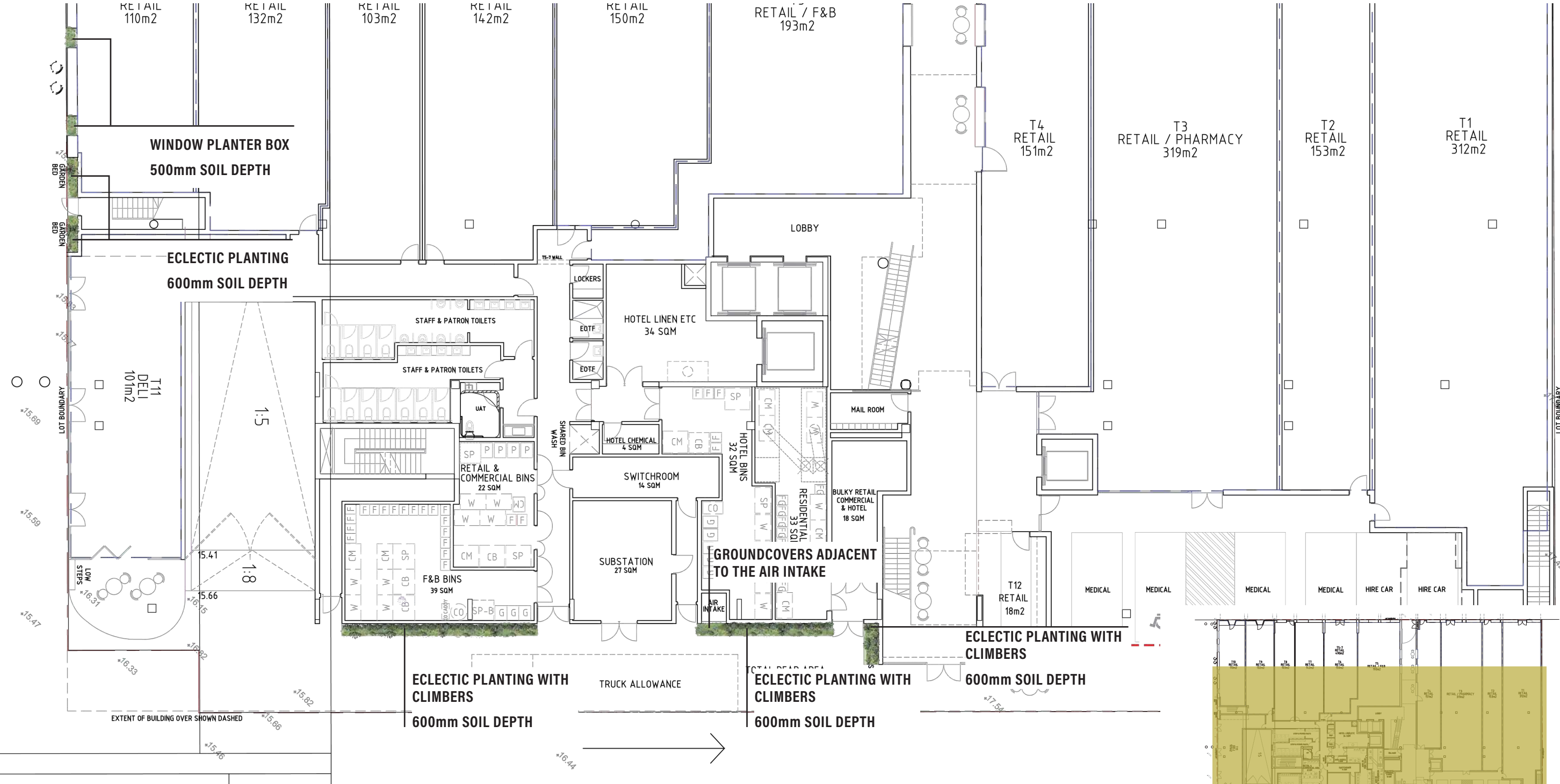


FIGURE 5. PRECEDENT IMAGE. FEDERATION ERA HOUSE AND GARDEN IN CLAREMONT.

Climbers and shrubs have been clustered around the house. Urns and plinths with annual plantings frame entryways.



GROUND FLOOR



GROUND FLOOR: A PICTURESQUE STREETSCAPE

PLANTING

SHRUBS AND GROUND COVERS



LIGULARIA RENIFORMIS,
TRACTOR SEAT PLANT
H: 0.2M X W: 2M



LOMANDRA SPP,
LOMANDRA
H: 1M X W: 1M



BANKSIA BLECHNIFOLIA,

H: 1M X W: 0.5M

TRAILING/HANGING PLANTS



HEBBERTIA SCANDENS,
SNAKE VINE
H: 10M X W: 5M



FICUS PUMILA,
CREEPING FIG
H: 5M X W: 1M

LANDSCAPE PRECEDENTS

WATER



FIGURE 6. PRECEDENT IMAGE. PALEY PARK, NEW YORK.

A running water feature will neutralise traffic sounds from Bay View Terrace.



FIGURE 7. PRECEDENT IMAGES. WATER FEATURE AND PLANTING (RIGHT), SHALLOW WATER FEATURE FRAMING PLANTED VIEW (LEFT).

Using water to create focal points to frame views, specimen planting or an art installation.

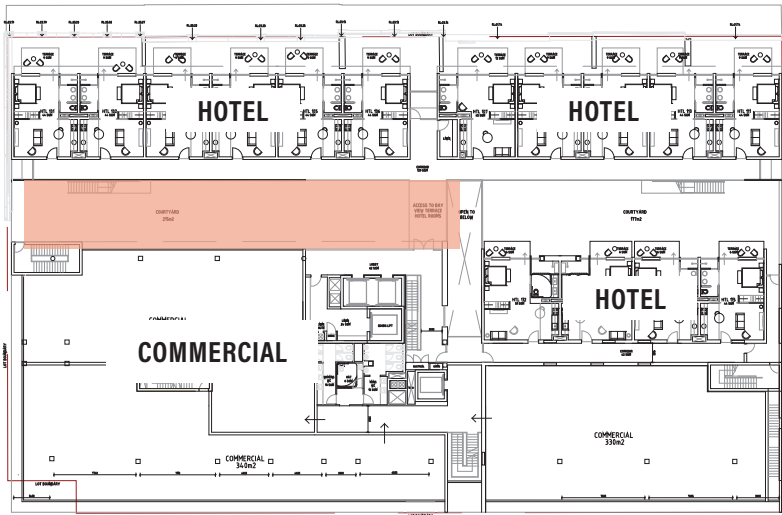


FIGURE 8. PRECEDENT IMAGE. WATER FEATURE AND PLANTING IN COURTYARD.

The water feature will act as a passive physical barrier, creating separation between the hotel spaces and commercial zones without disrupting sightlines.

WATER: THE LEVEL 1 COURTYARD

Creating a sense on tranquility and reflection, the use of water within the Level 1 Courtyard and Communal Space will ground the site with the surrounding landscape of ephemeral wetlands.

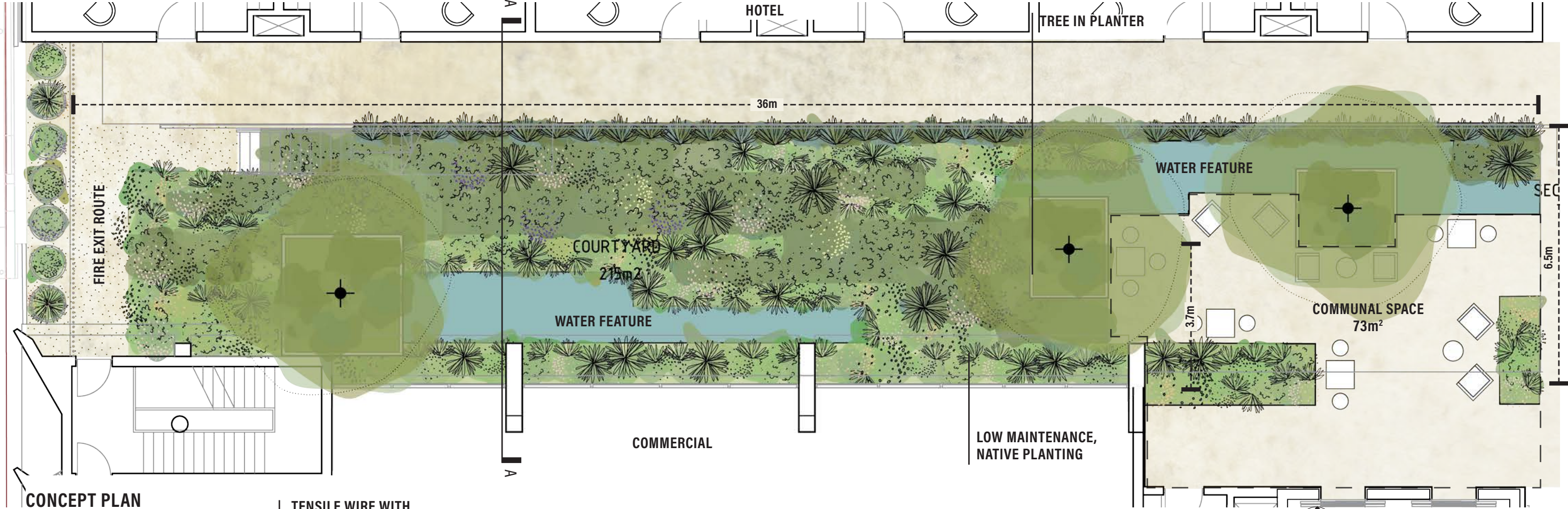


LOCATION PLAN

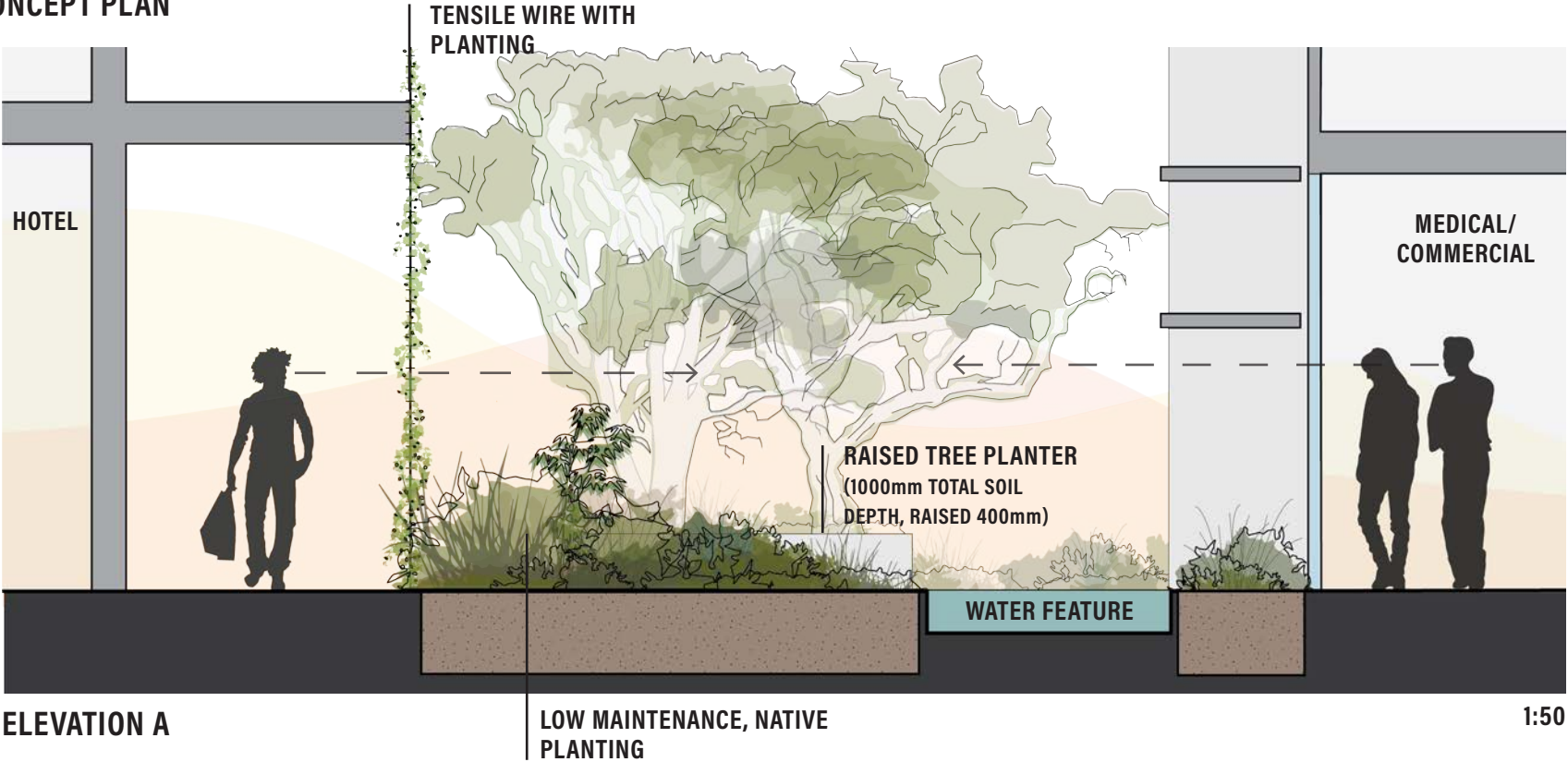
NOT TO SCALE



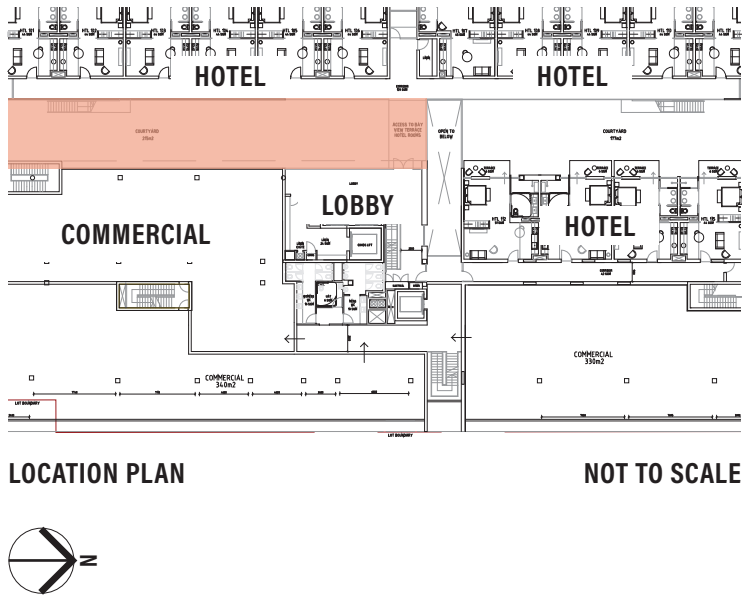
LEVEL 01 COMMUNAL SPACE



1:100 @A3



1:50



LEVEL 01 COMMUNAL SPACE

PLANTING

SHRUBS AND GROUND COVERS



BAUMEA JUNCEA,
BARE TWIGRUSH
H: 0.2M X W: 1.2M



BAUMEA PREISSII,
SOFT TWIG RUSH
H: 0.2M X W: 2M



DAMPIERA LINEARIS,
COMMON DAMPIERA
H: 10M X W: 5M



FICINIA NODOSA,
CLUB RUSH
H: 1M X W: 1M



JUNCUS PALLIDUS,
PALE RUSH
H: 1M X W: 2M



LOMANDRA SPP,
LOMANDRA
H: 1M X W: 1M

TREES



MELALEUCA RHAPHIOPHYLLA,
SWAMP PAPERBARK
H: 10M X W: 5M



MELALEUCA QUINQUENERVIA,
BROAD-LEAVED PAPERBARK
H: 10M X W: 5M



DICHONDRA ARGENTEA,
DICHONDRA SILVER FALLS
H: 10M X W: 5M



ACACIA SALIGNA PROSTRATE,
WATTLE
H: 10M X W: 5M



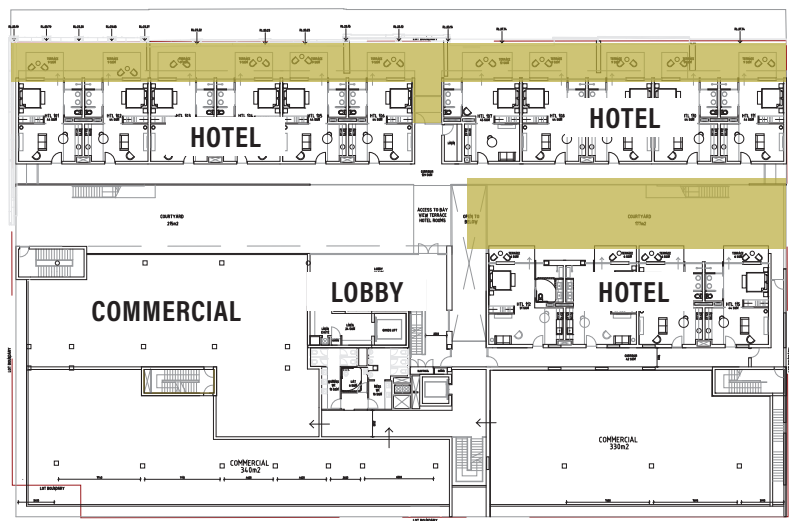
HEBBERTIA SCANDENS,
SNAKE VINE
H: 10M X W: 5M

LANDSCAPE PRECEDENTS

THE LEAFY SUBURB

THE SECRET GARDEN

Featuring an eclectic plant palette, the secret garden planting draws inspiration from the gardenesque character of Claremont.



LOCATION PLAN NOT TO SCALE

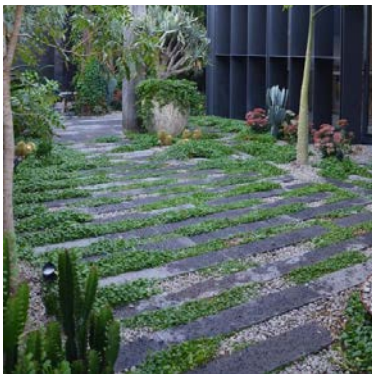


FIGURE 9. PRECEDENT IMAGES. COURTYARD PAVING WITH DISSOLVED EDGES.

Dissolving the edge between the hard and softscape has been proposed to create the sense that the garden has been left to own devices, enhancing the feeling of the area as a discovered or unseen space.



FIGURE 11. PRECEDENT IMAGE. PAVED COURTYARD WITH FEATURE PLANTING.

An eclectic plant palette will give the area a unique character while also featuring species that may be familiar to international tourists, defining the space as 'a home away from home.'



FIGURE 10. PRECEDENT IMAGES. PLANTING AND STRUCTURES FRAMING VIEWS OF LIVING SPACES.

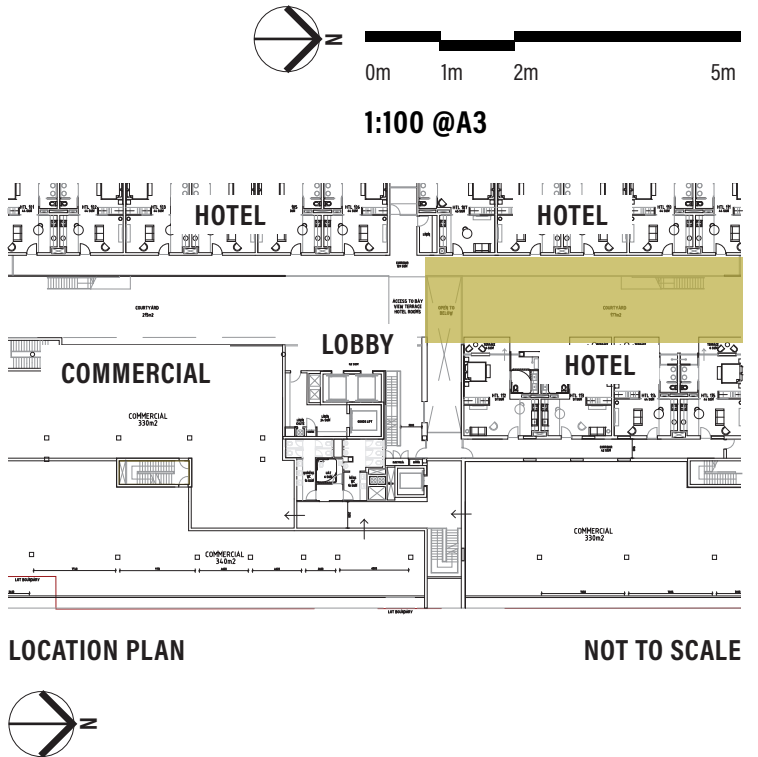
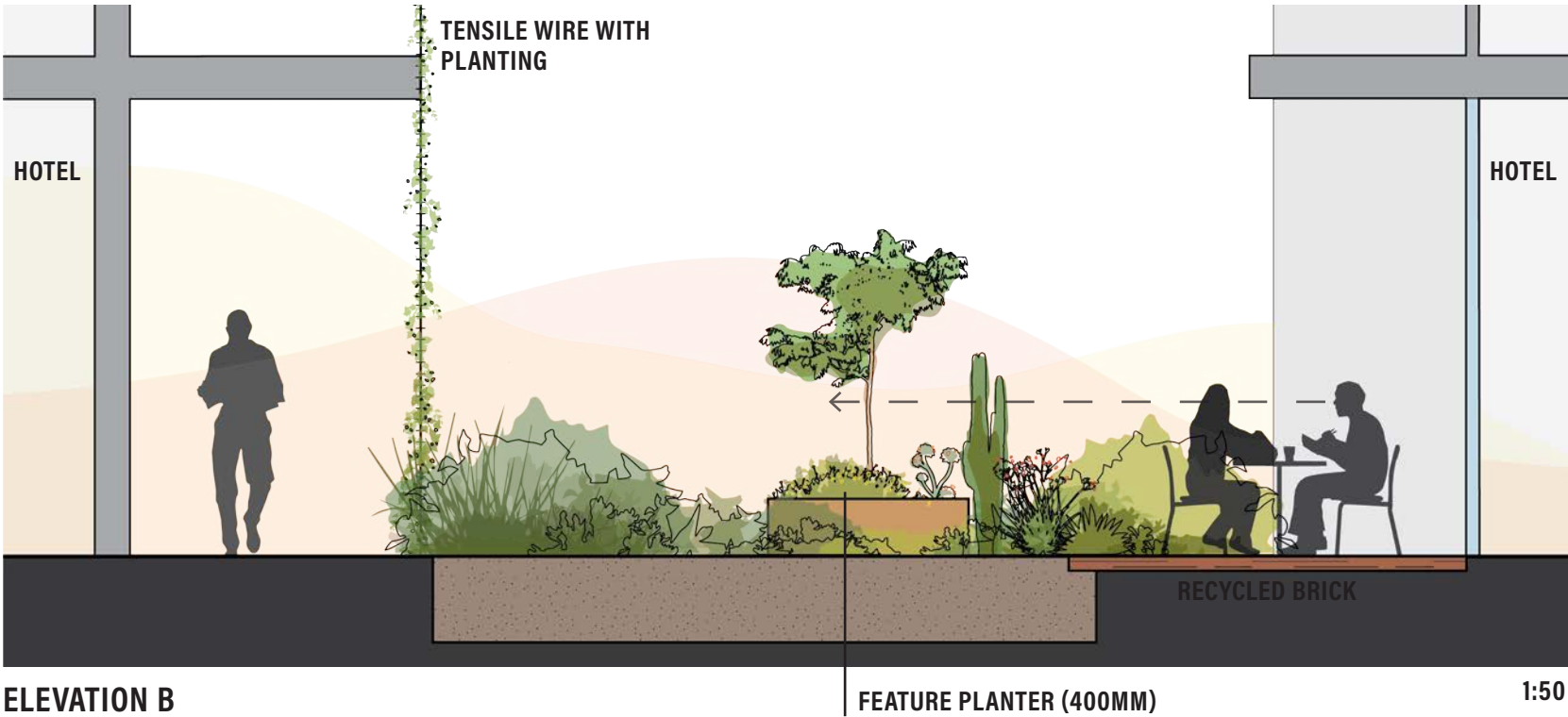
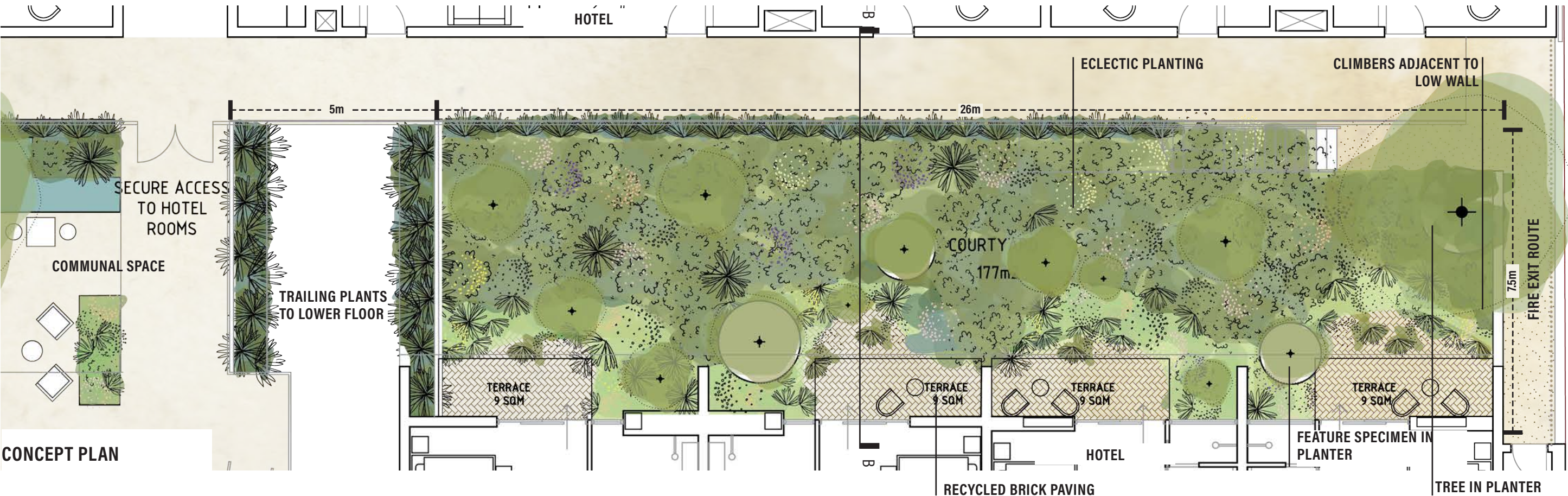
Creating focal points with strategic planting to frame views and enhance the sense of discovery/refuge.



FIGURE 12. PRECEDENT IMAGES. PAVED COURTYARD WITH ARBOUR (LEFT). OUTDOOR SEATING AREA WITH PLANTING (RIGHT).

Contrasting textures and materiality is proposed to soften the landscape, creating a green skin that adds to the eclectic feel and sense that the garden has taken on a life on its own.

LEVEL 01 COURTYARD: THE SECRET GARDEN



LEVEL 01 SECRET GARDEN

PLANTING

SHRUBS AND GROUND COVERS



VIOLA HEDERACEA,
NATIVE VIOLET
H: 0.2M X W: 1.2M



LIGULARIA RENIFORMIS,
TRACTOR SEAT PLANT
H: 0.2M X W: 2M



PENNISETUM SP,
PURPLE FOUNTAIN GRASS
H: 10M X W: 5M



BANKSIA BLECHNIFOLIA,
H: 1M X W: 0.5M



CASUARINA GLAUCA,
COUSIN IT CASUARINA
H: 0.4M X W: 0.6M



JUNIPERUS COMMUNIS,
JUNIPER BERRY (GIN BOTANICAL)
H: 1M X W: 2M

FEATURE PLANTING



BRACHYCHITON RUPESTRIS,
QUEENSLAND BOTTLE TREE
H: 10M X W: 5M



BANKSIA ASHBYI,
ASHBY'S BANKSIA
H: 6M X W: 2M



XANTHORROHEA PRESISSI,
GRASS TREE
H: 2M X W: 1M



OPUNTIA FICUS INDICA,
INDIAN FIG
H: 2M X W: 2M

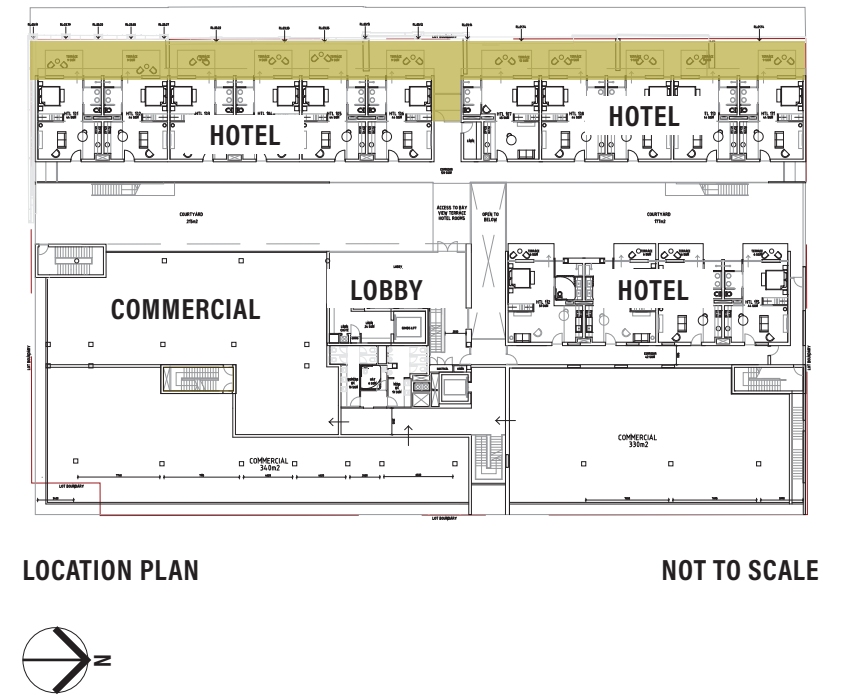
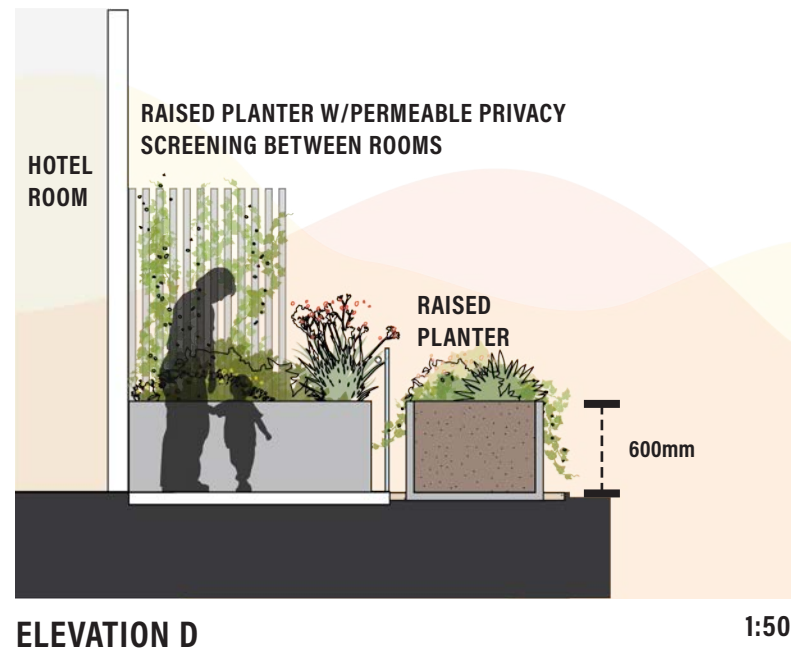
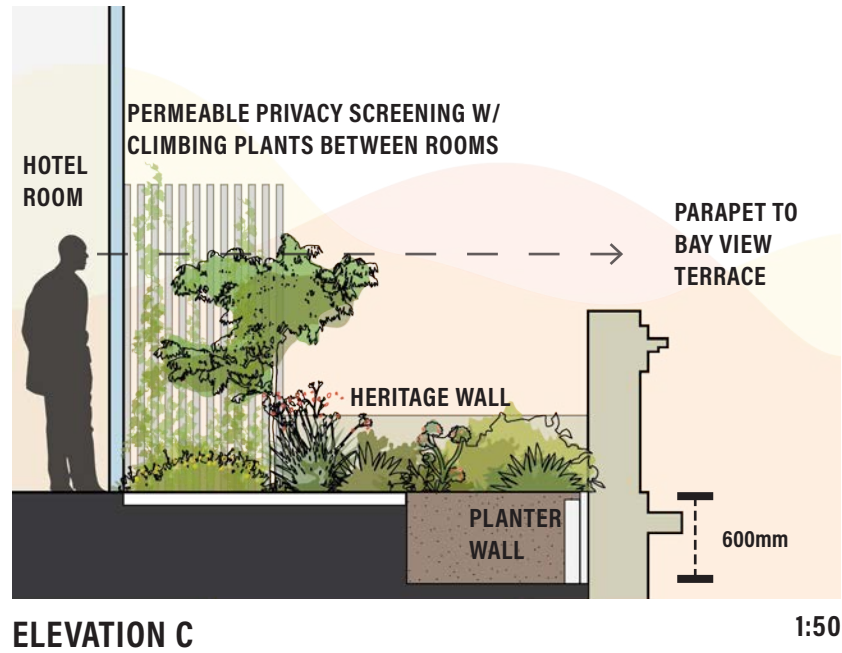
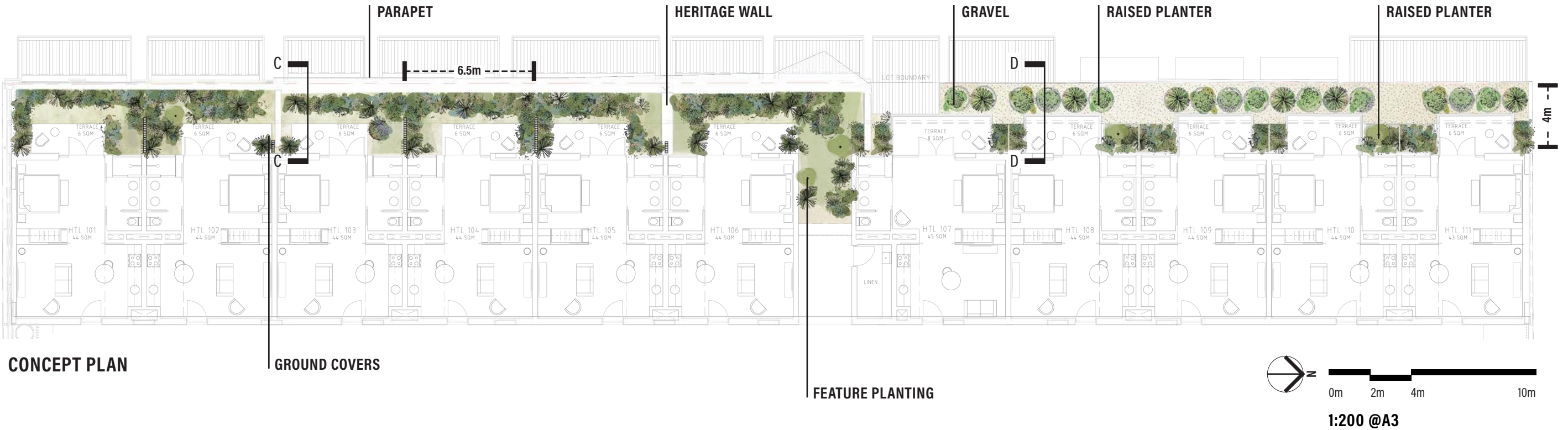


DICHONDRA ARGENTEA,
DICHONDRA SILVER FALLS
H: 0.2M X W: 1M



FICUS PUMILA,
CREEPING FIG
H: 5M X W: 1M

LEVEL 01 TERRACE



LEVEL 01 TERRACE

PLANTING

SHRUBS AND GROUND COVERS



DICHONDRA RIPENS,
DICHONDRA
H: 0.2M X W: 1.2M



BANKSIA BLECHNIFOLIA,
BANKSIA
H: 1M X W: 0.5M



MAMMILLARIA MUEHLENPFORDTII,
GOLDEN PINCUSHION CACTUS
H: 0.2M X W: 0.2M



SANTOLINA CHAMAECYPARISSUS,
COTTON LAVENDAR
H: 0.4M X W: 0.4M



ASPARAGUS DENSIFLORUS,
ASPARAGUS FERN
H: 0.5M X W: 0.5M



LOMANDRA SPP,
LOMANDRA
H: 1M X W: 1M

FEATURE PLANTING



BRACHYCHITON RUPESTRIS,
QUEENSLAND BOTTLE TREE
H: 10M X W: 5M



BANKSIA ASHBYI,
ASHBY'S BANKSIA
H: 6M X W: 2M



OPUNTIA FICUS INDICA,
INDIAN FIG
H: 2M X W: 2M



DICHONDRA ARGENTEA,
DICHONDRA SILVER FALLS
H: 0.2M X W: 1M



FICUS PUMILA,
CREeping FIG
H: 5M X W: 1M



TRACHELOSPERMUM JASMINOIDES,
STAR JASMINE
H: 5M X W: 1M

LEVEL 02-07 BALCONIES



FIGURE 14. PRECEDENT IMAGE. POT PLANT ON COFFEE TABLE.



FIGURE 15. PRECEDENT IMAGE. POT PLANT ON BALCONY.



FIGURE 16. PRECEDENT IMAGE. POT PLANT ON BALCONY.



FIGURE 17. PRECEDENT IMAGE. POT PLANT ON BALCONY.



JUNIPERUS HORIZONTALIS,
BLUE RUG JUNIPER
H: 0.4M X W: 1M



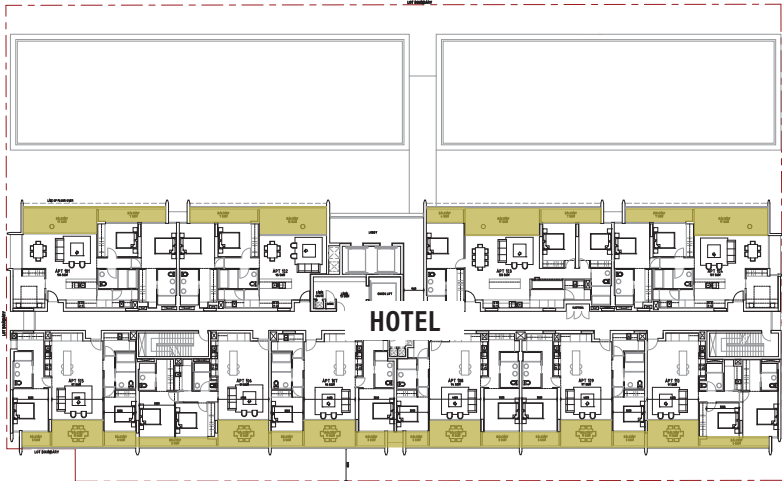
FICUS ELASTICA,
RUBBER PLANT
H: 1M X W: 2M



OPUNTIA FICUS INDICA,
INDIAN FIG
H: 2M X W: 2M



DICHONDRA ARGENTEA,
DICHONDRA SILVER FALLS
H: 0.2M X W: 1M



LOCATION PLAN NOT TO SCALE

LANDSCAPE PRECEDENTS

WATER: THE ROOF TOP GARDEN

The rooftop garden on Level 3 draws inspiration from the wetland, riparian vegetation of the surrounding landscape. Visual and thematic connections to the Level 1 Courtyard will occur when the gardens are viewed together from the balconies above.



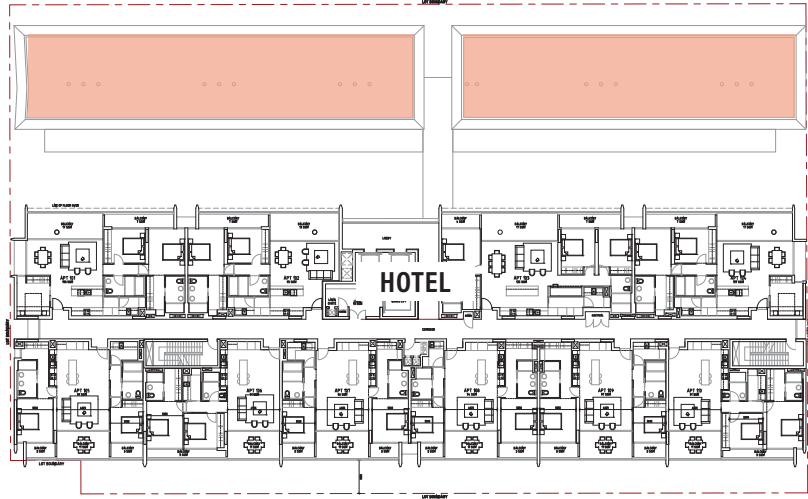
FIGURE 18. PRECEDENT IMAGES. ROOFTOP GARDENS FEATURING DECORATIVE GRAVEL (LEFT) AND STONES (RIGHT).

Decorative gravels, mounding and rock placements provide visual interest and access from maintenance.



FIGURE 19. PRECEDENT IMAGE. ROOFTOP GARDEN FEATURE SEDGE/ WETLAND STYLE PLANTING.

Wetland style planting will provide visual links to the water themed courtyard on Level 1.

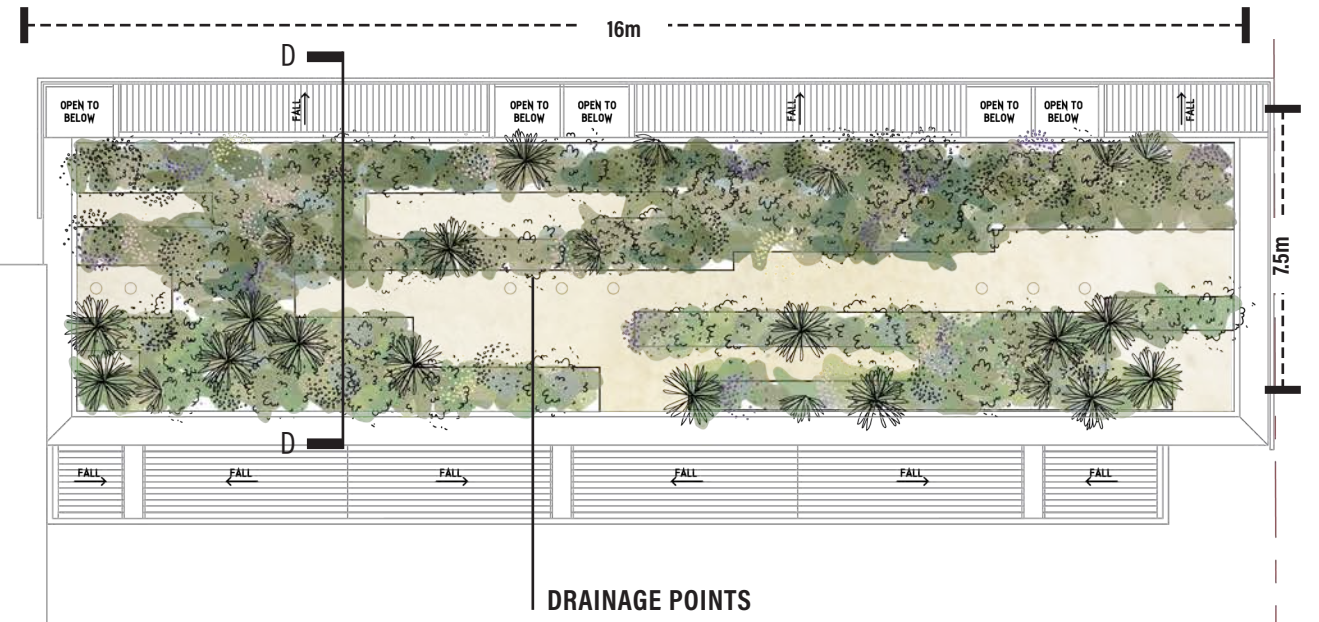
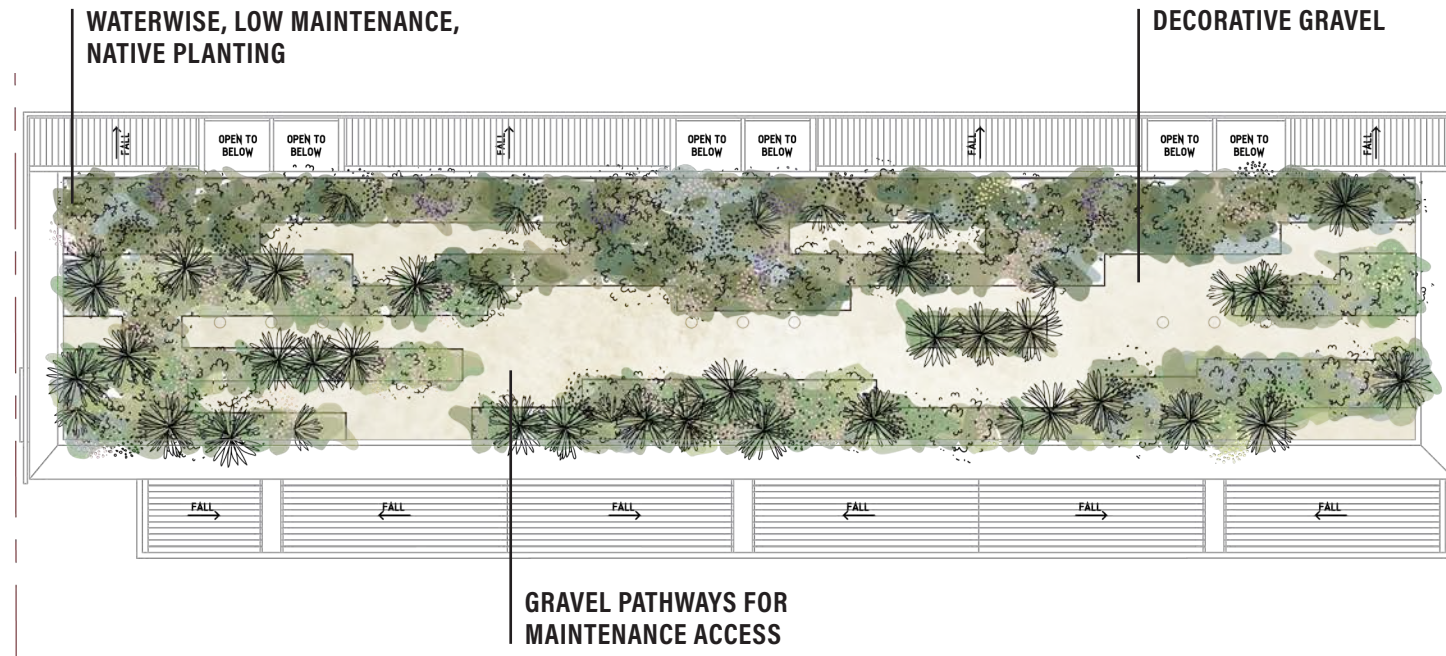


LOCATION PLAN

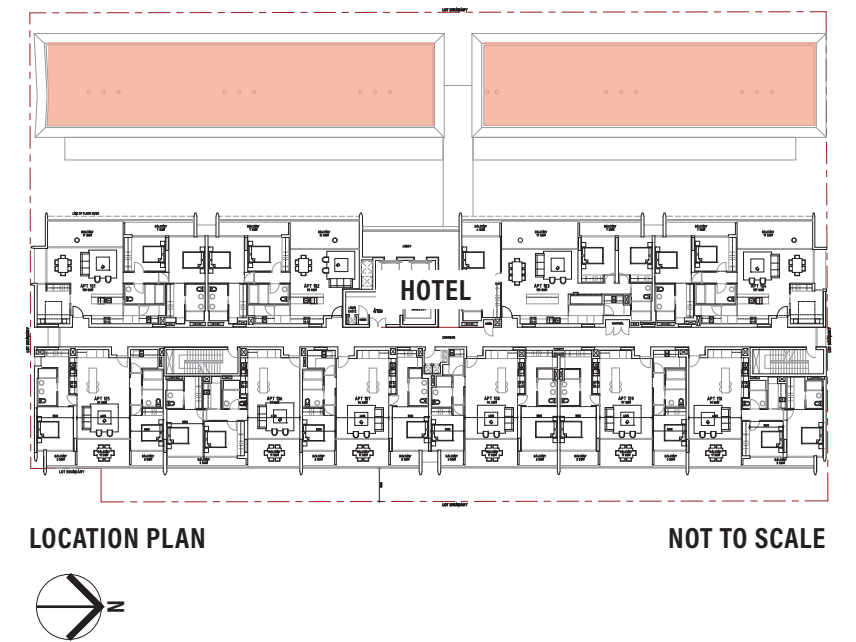
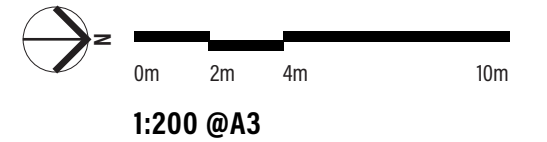
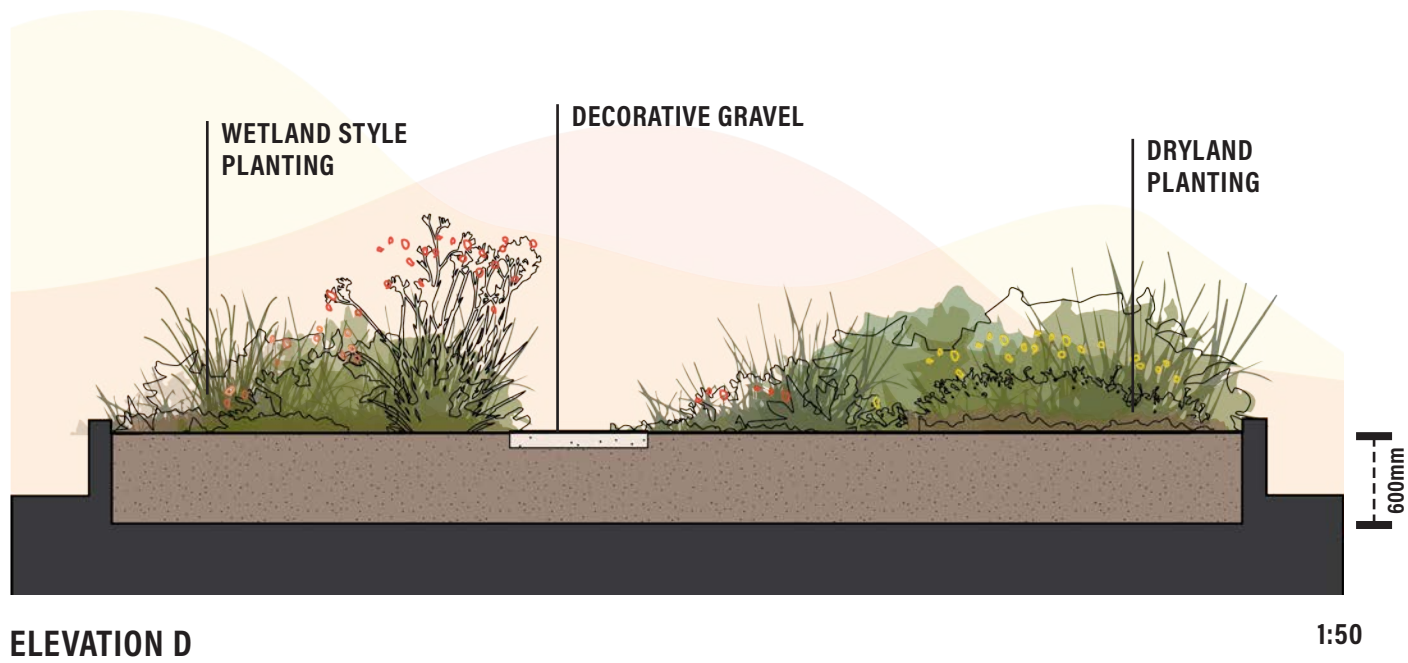
NOT TO SCALE



LEVEL 03



CONCEPT PLAN



LEVEL 03 ROOFTOP GARDEN

PLANTING

WETLAND PLANTING (EASTERN SIDE)



BAUMEA JUNCEA,
BARE TWIGRUSH
H: 0.2M X W: 1.2M



BAUMEA PREISSII,
SOFT TWIG RUSH
H: 0.2M X W: 2M



DAMPIERA LINEARIS,
COMMON DAMPIERA
H: 1M X W: 1M



FICINIA NODOSA,
CLUB RUSH
H: 1M X W: 1M



JUNCUS PALLIDUS,
PALE RUSH
H: 1M X W: 2M



LOMANDRA SPP,
LOMANDRA
H: 1M X W: 1M

DRYLAND PLANTING (WESTERN SIDE)



BANKSIA NIVEA,
HONEYPOT DRYANDRA
H: 1M X W: 1M



CALOTHAMNUS HIRSUTUS,
HAIRY CLAW FLOWER
H: 1.5M X W: 1.5M



CALOTHAMNUS QUADRIFIDIS,
ONE SIDED BOTTLEBRUSH
H: 2.5M X W: 2.5M



HYPOCALYMMMA ANGUSTIFOLIUM,
WHITE MYRTLE
H: 1M X W: 1M



MELALEUCA HUEGLII,
CHENILLE HONEY-MYRTLE
H: 2M X W: 4M



LEPIDOSPERMA LONGITUDINALE,
PITHY SWORD SEDGE
H: 0.5M X W: 2M

LEVEL 07



CONCEPT PLAN

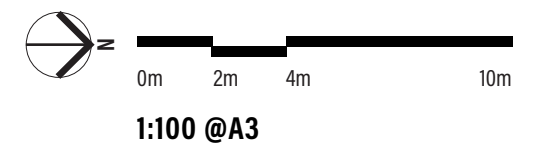
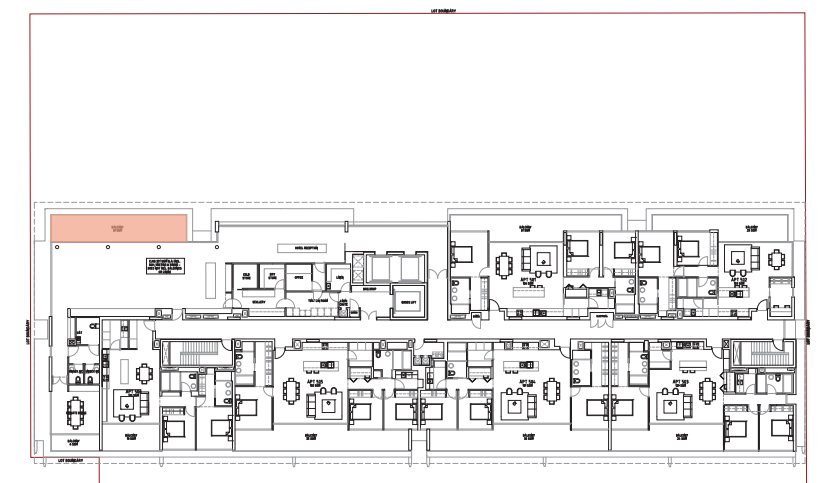


FIGURE 20. PRECEDENT IMAGE. BALCONY WITH PLANTING ALONG OUTER EDGE.



FIGURE 21. PRECEDENT IMAGE. GRC PLANTER BOX.

Wetland style planting will provide visual links to the water themed courtyard on Level 1 and Rooftop Garden of Level 3.



LOCATION PLAN

NOT TO SCALE



LEVEL 07 BALCONY

PLANTING

SHRUBS



CASUARINA GLAUCA,
COUSIN IT CASUARINA
H: 0.4M X W: 0.6M



LOMANDRA SPP,
LOMANDRA
H: 1M X W: 1M

PUBLIC ART

The Level 01 courtyard will become a part of Claremont's Public Art Strategy with a connection to the Cottesloe Sculpture by the Sea.

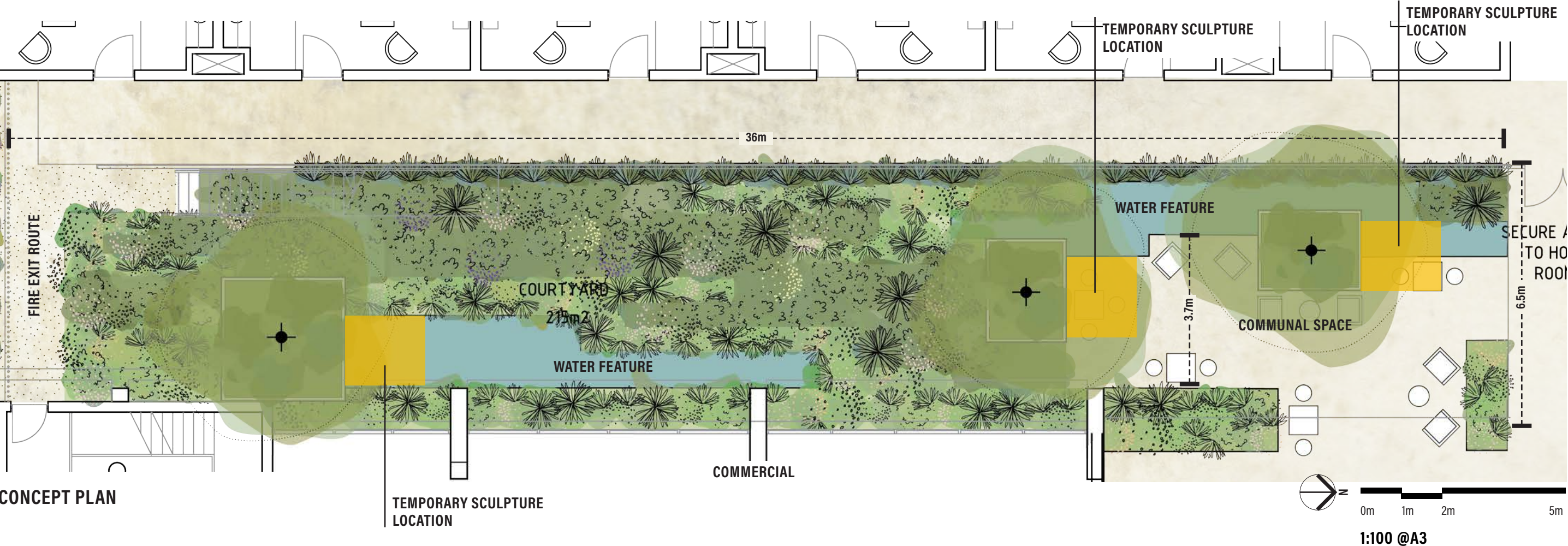


FIGURE 22. PRECEDENT IMAGE. GALERIES LAFAYETTE.

Galeries Lafayette has long enjoyed strong links with the worlds of fashion and contemporary design. The Haussmann department store regularly hosts prestigious events, showcasing key designers of the moment as well as introducing its customers to artists whose work has endured the test of time.

The Galeries Lafayette group decided to cement its links with contemporary design by creating the Galerie des Galeries, a free-entry art gallery on the first floor of the store, dedicated to exhibiting the cross-over between art, fashion and design.

Acutely aware of the added value represented by design, but also of its own role in making beauty accessible to all, Galeries Lafayette continues this commitment through numerous sponsorship activities.

SPP 7.3 VOLUME 2 APARTMENTS

3.3 TREE CANOPY AND DEEP SOIL ZONE

OBJECTIVES

- 3.3.1 Site planning maximises retention of existing healthy and appropriate trees and protects the viability of adjoining trees.
- 3.3.2 Adequate measures are taken to improve tree canopy (long term) or to offset reduction of tree canopy from pre-development condition.
- 3.3.3 Development includes deep soil areas, or other infrastructure to support planting on structures, with sufficient area and volume to sustain healthy plant and tree growth.

ACCEPTABLE OUTCOMES

- A3.3.1 Retention of existing trees on the site
- A3.3.2 The removal of existing trees that meet any of the criteria at A3.3.1 is supported by an arboriculture report.
- A3.3.3 The development is sited and planned to have no detrimental impacts on, and to minimise canopy loss of adjoining trees.
- A3.3.4 Deep soil areas are provided in accordance with Table 3.3a. Deep soil areas are to be co-located with existing trees for retention and/or adjoining trees, or alternatively provided in a location that is conducive to tree growth and suitable for communal open space.
- A3.3.5 Landscaping includes existing and new trees with shade producing canopies in accordance with Tables 3.3a and 3.3b.
- A3.3.6 The extent of permeable paving or decking within a deep soil area does not exceed 20 percent of its area and does not inhibit the planting and growth of trees.
- A3.3.7 Where the required deep soil areas cannot be provided due to site restrictions, planting on structure with an area equivalent to two times the shortfall in deep soil area provision is provided.



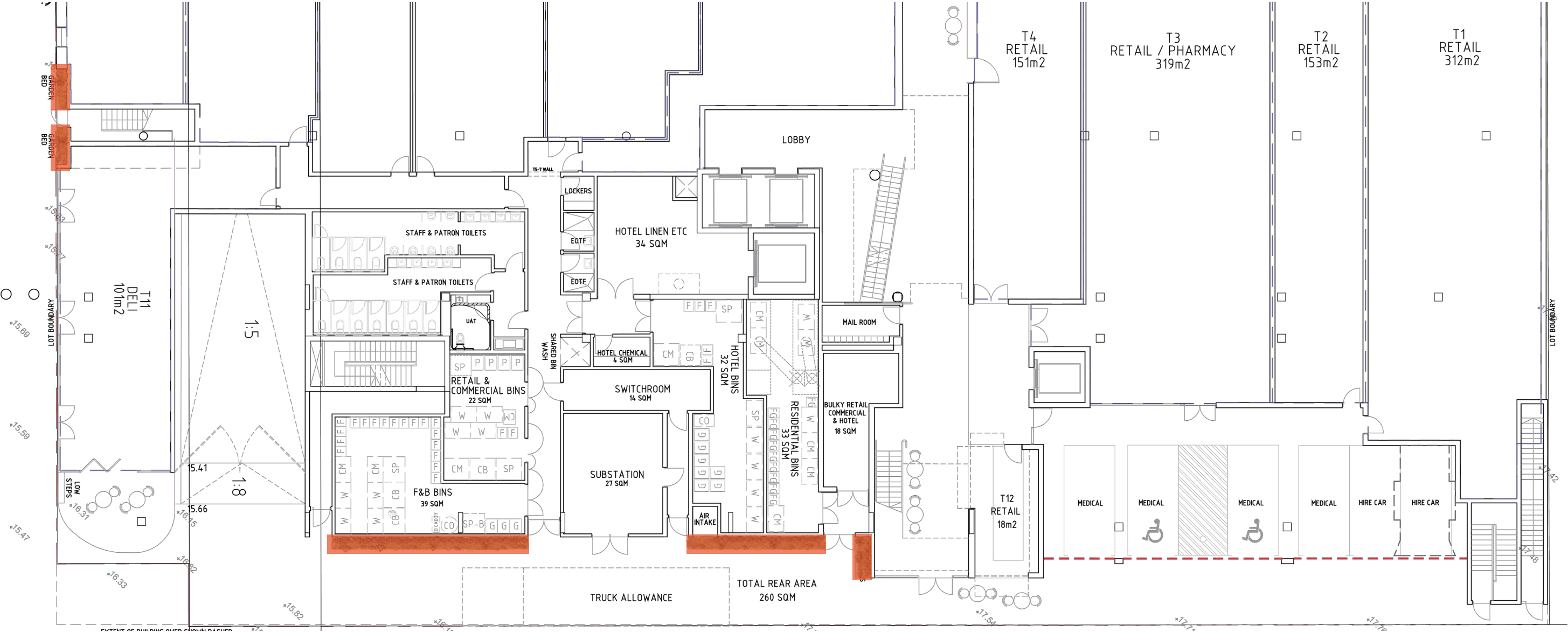
PLANTING ON STRUCTURE

Lot Area	3270m ²
Required Planting on Structure (20% Lot Area)	654m ²
Proposed Planting on Structure (25% Lot Area)	819m ²

SPP 7.3 VOLUME 2 APARTMENTS

DEEP SOIL ZONE AND INDICATIVE PLANTING ON STRUCTURE

GROUND FLOOR



600mm SOIL DEPTH - 13SQM

1:200 @A3

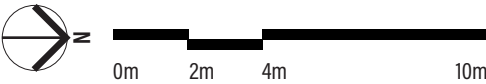
SPP 7.3 VOLUME 2 APARTMENTS

DEEP SOIL ZONE AND INDICATIVE PLANTING ON STRUCTURE

LEVEL 01



- 600mm SOIL DEPTH - 470SQM
- 1000mm SOIL DEPTH - RAISED
400mm ABOVE GROUND - 20SQM

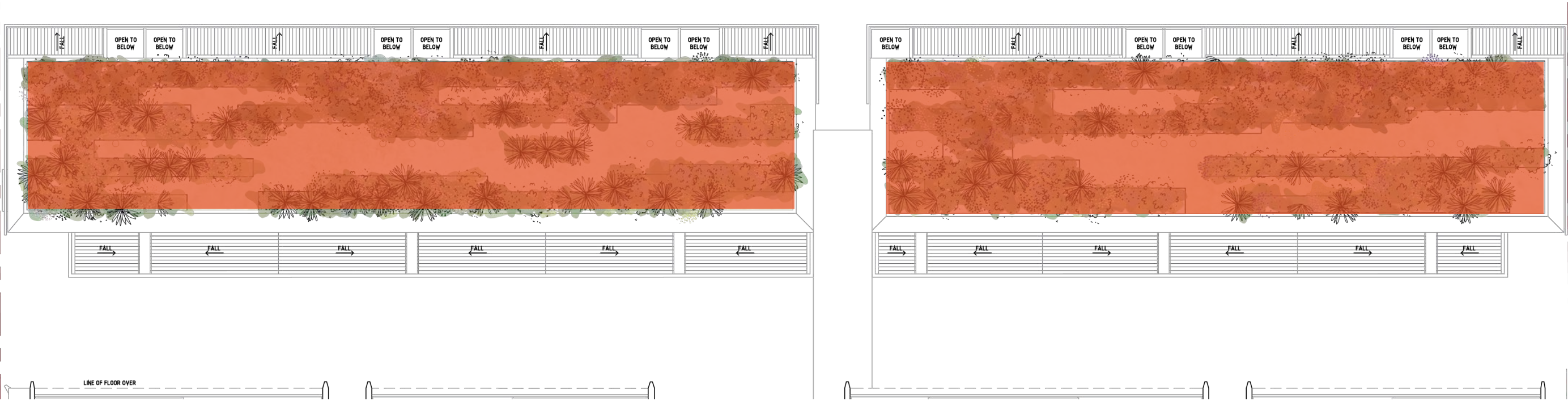


1:200 @A3

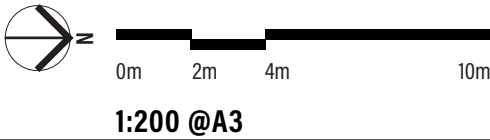
SPP 7.3 VOLUME 2 APARTMENTS

DEEP SOIL ZONE AND INDICATIVE PLANTING ON STRUCTURE

LEVEL 03



600mm SOIL DEPTH - 317SQM



DEEP SOIL ZONE & TREE CANOPY

	DEEP SOIL AREA (DSA) WITHIN LOT	ON STRUCTURE DSA 1M DEPTH PLANTERS	ON STRUCTURE PLANTING .6M DEPTH PLANTERS	TOTAL
GROUND			13M2	13M2
LEVEL 1		20M2	470M2	490M2
LEVEL 3			317M2	317M2
TOTAL	M2	412M2	344M2	820M2

CODE	BOTANICAL NAME	COMMON NAME	QTY	CANOPY SIZE	STOCK SIZE	SIZE AT DAY ONE	SIZE AT MATURITY
BRU	BRACHYCHITON RUPESTRIS	QUEENSLAND BOTTLE TREE	1	19.6SQM (MEDIUM)	200L	3-3.5M	H: 10M X W: 5M
MRH	MELALEUCA RHAPHIOPHYLLA	SWAMP PAPERBARK	1	28.27SQM (MEDIUM)	200L	3-3.5M	H: 10M X W: 6M
MQU	MELALEUCA QUINQUENERVIA	BROAD-LEAVED PAPERBARK	2	28.27SQM (MEDIUM)	200L	3-3.5M	H: 10M X W: 6M
TOTAL			4	76.14SQM			

UDLA

LEVEL 1A, 3-5 JOSEPHSON STREET
FREMANTLE, 6160 WA
HELLO@UDLA.COM.AU | (08) 9336 7577



BAY VIEW TERRACE

LANDSCAPE DEVELOPMENT APPLICATION

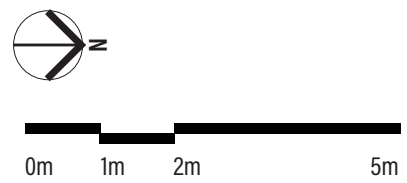
16TH AUGUST 2023

UDLA



- NOTES:
- PLANTERS AND POTS TO BE IRRIGATED OFF MAINS WATER USING POP-UP SPRAYERS. PIPEWORK TO BE CONCEALED BENEATH PLANTERS.
 - POTS, PLANTERS AND DRAINAGE TO ARCHITECT'S SPECIFICATION.

DEPARTMENT OF PLANNING, LANDS AND HERITAGE	
DATE	FILE
18-Aug-2023	SDAU-059-22



PM01: WINDOW BOX PLANTING
5/M²



LIGULARIA RENIFORMIS,
TRACTOR SEAT PLANT
H: 0.2M X W: 2M



HEBBERTIA SCANDENS,
SNAKE VINE
H: 10M X W: 5M

PM02: GROUND FLOOR
5/M²



LIGULARIA RENIFORMIS,
TRACTOR SEAT PLANT
H: 0.2M X W: 2M



LOMANDRA SPP,
LOMANDRA
H: 1M X W: 1M



BANKSIA BLECHNIFOLIA,
BANKSIA BLECHNIFOLIA
H: 1M X W: 0.5M



HEBBERTIA SCANDENS,
SNAKE VINE
H: 10M X W: 5M



FICUS PUMILA,
CREeping FIG
H: 5M X W: 1M

UDLA

LEVEL 1A, 3-5 JOSEPHSON STREET, FREMANTLE, 6160
08 9336 7577

PROJECT
BAY VIEW TERRACE

DRAWING
DA GROUND FLOOR LANDSCAPE PLAN

DRAWING NUMBER
L01

ISSUE DATE
JULY 2023

SCALE
1:200 @ A2

REVISION
A

DRAWN BY
AS



PM03: TERRACE PLANTING

5/M²

CODE	BOTANICAL NAME	COMMON NAME	SIZE
DRI	DICHONDRA RIPENS	DICHONDRA	140ML
BBL	BANKSIA BLECHINFOLIA	-	140ML
MMF	MAMMILLARIA MUEHLENPFORDTII	GOLDEN PINCUSHION CACTUS	140ML
SCH	SANTOLINA CHAMAECYPARISSUS	COTTON LAVENDER	140ML
ADE	ASPARAGUS DENSIFLORUS	ASPARAGUS FERN	140ML
LLO	LOMANDRA LONGIFOLIA	LOMANDRA	140ML
FPU	FICUS PUMILA	CREEPING FIG	140ML
TJA	TRACHELOSPERMUM JASMINOIDES	STAR JASMINE	140ML

PM04: CLIMBING PLANTS

5/M²

CODE	BOTANICAL NAME	COMMON NAME	SIZE
HSC	HEBBERTIA SCANDENS	SNAKE VINE	140ML

PM05: WETLAND PLANTING

4/M²

CODE	BOTANICAL NAME	COMMON NAME	SIZE
BJU	BAUMEA JUNCEA	BARE TWIGRUSH	140ML
BPR	BAUMEA PREISSII	SOFT TWIG RUSH	140ML
DLI	DAMPIERA LINEARIS	COMMON DAMPIERA	140ML
FNO	FICINIA NODOSA	CLUB RUSH	140ML
JPA	JUNCUS PALLIDUS	PALE RUSH	140ML
LLO	LOMANDRA LONGIFOLIA	LOMANDRA	140ML

PM06: TRAILING PLANTS

5/M²

LLO	LOMANDRA LONGIFOLIA	LOMANDRA	140ML
DAR	DICHONDRA ARGENTEA	DICHONDRA SILVER FALLS	140ML
ASA	ACACIA SALIGNA PROSTRATE	WATTLE	140ML

PM07: SECRET GARDEN

4/M²

CODE	BOTANICAL NAME	COMMON NAME	SIZE
VHE	VIOLA HEDERACEA	NATIVE VIOLET	140ML
LRE	LIGULARIA RENIFORMIS	TRACTOR SEAT PLANT	140ML
PSP	PENNISETUM SP	PURPLE FOUNTAIN GRASS	140ML
BBL	BANKSIA BLECHNIFOLIA	-	140ML
CGL	CASUARINA GLAUCA	COUSIN IT CASUARINA	140ML
JCO	JUNIPERUS COMMUNIS PROSTRATE	JUNIPER BERRY (GIN BOTANICAL)	140ML

TREES AND FEATURE PLANTING

TERRACE

CODE	BOTANICAL NAME	COMMON NAME	SIZE
BAS	BANKSIA ASHBYI	ASHBY'S BANKSIA	5L
OFI	OPUNTIA FICUS INDICA	INDIAN FIG	5L

COMMUNAL SPACE - WETLAND PLANTING

CODE	BOTANICAL NAME	COMMON NAME	SIZE
MRH	MELALEUCA RHAPHIOPHYLLA	SWAMP PAPERBARK	200L
MQU	MELALEUCA QUINQUENERVIA	BROAD-LEAVED PAPERBARK	200L

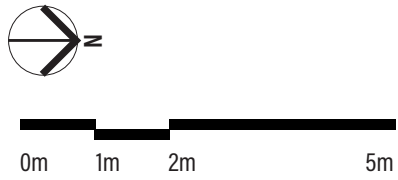
SECRET GARDEN

CODE	BOTANICAL NAME	COMMON NAME	SIZE
BRU	BRACHYCHITON RUPESTRIS	QUEENSLAND BOTTLE TREE	200L
BAS	BANKSIA ASHBYI	ASHBY'S BANKSIA	5L
XPR	XANTHORROHEA PRESSISSI	GRASS TREE	400ML
OFI	OPUNTIA FICUS INDICA	INDIAN FIG	5L

NOTES:

- PLANTERS AND POTS TO BE IRRIGATED OFF MAINS WATER USING POP-UP SPRAYERS. PIPEWORK TO BE CONCEALED BENEATH PLANTERS.
- POTS, PLANTERS AND DRAINAGE TO ARCHITECT'S SPECIFICATION.

DEPARTMENT OF PLANNING, LANDS AND HERITAGE	
DATE 18-Aug-2023	FILE SDAU-059-22



UDLA

LEVEL 1A, 3-5 JOSEPHSON STREET, FREMANTLE, 6160
08 9336 7577

PROJECT
BAY VIEW TERRACE

DRAWING
DA LEVEL 01 LANDSCAPE PLAN

DRAWING NUMBER
L02

ISSUE DATE
JULY 2023

REVISION
A

SCALE
1:200 @ A2

DRAWN BY
AS



PM08: DRYLAND PLANTING
4/M²



BANKSIA NIVEA,
HONEYPOT DRYANDRA
H: 1M X W: 1M



CALOTHAMNUS HIRSUTUS,
HAIRY CLAW FLOWER
H: 1.5M X W: 1.5M



CALOTHAMNUS QUADRIFIDUS,
ONE SIDED BOTTLEBRUSH
H: 2.5M X W: 2.5M



HYPOCALYMMMA ANGUSTIFOLIUM,
WHITE MYRTLE
H: 1M X W: 1M



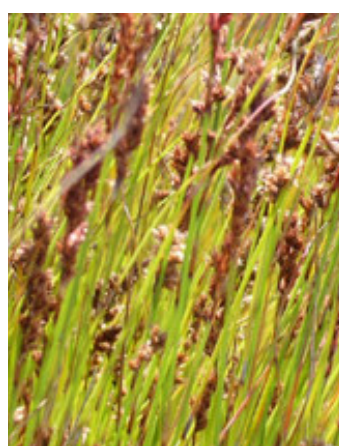
MELALEUCA HUEGELLII,
CHENILLE HONEY-MYRTLE
H: 2M X W: 4M



LEPIDOSPERMA LONGITUDINALE,
PITHY SWORD SEDGE
H: 0.5M X W: 2M

- NOTES:
- PLANTERS AND POTS TO BE IRRIGATED OFF MAINS WATER USING POP-UP SPRAYERS. PIPEWORK TO BE CONCEALED BENEATH PLANTERS.
 - POTS, PLANTERS AND DRAINAGE TO ARCHITECT'S SPECIFICATION.

PM05: WETLAND PLANTING
4/M²



BAUMEA JUNCEA,
BARE TWIGRUSH
H: 0.2M X W: 1.2M



BAUMEA PREISSII,
SOFT TWIG RUSH
H: 0.2M X W: 2M



DAMPIERA LINEARIS,
COMMON DAMPIERA
H: 1M X W: 1M



FICINIA NODOSA,
CLUB RUSH
H: 1M X W: 1M



JUNCUS PALLIDUS,
PALE RUSH
H: 1M X W: 2M



LOMANDRA SPP,
LOMANDRA
H: 1M X W: 1M

DEPARTMENT OF PLANNING, LANDS AND HERITAGE

DATE: 18-Aug-2023 FILE: SDAU-059-22

0m 1m 2m 5m

UDLA

LEVEL 1A, 3-5 JOSEPHSON STREET, FREMANTLE, 6160 08 9336 7577

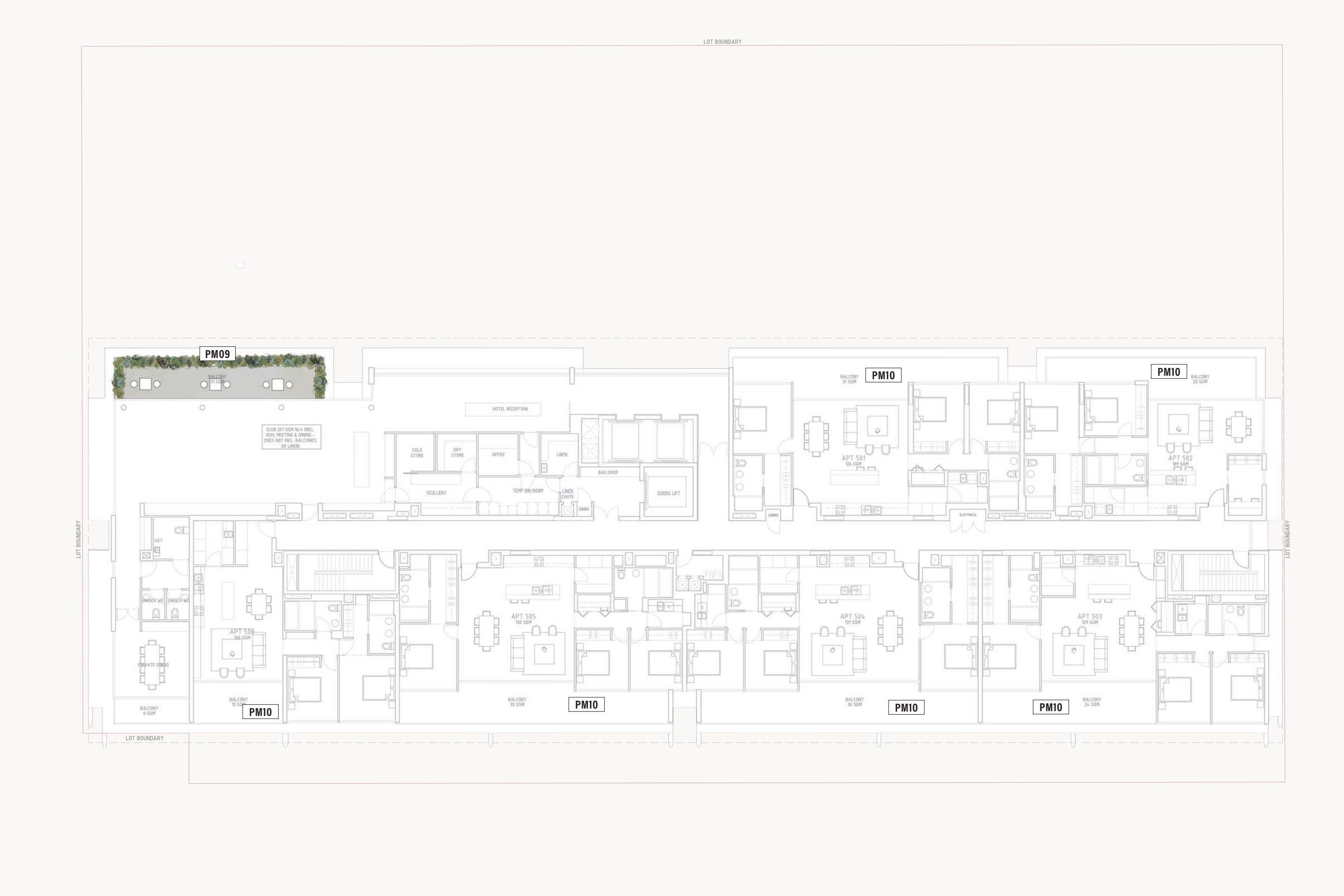
PROJECT: BAY VIEW TERRACE

DRAWING: DA LEVEL 03 LANDSCAPE PLAN

DRAWING NUMBER: L03

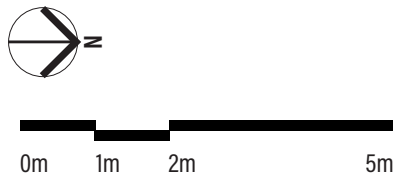
ISSUE DATE: JULY 2023 REVISION: A

SCALE: 1:200 @ A2 DRAWN BY: AS



- NOTES:
- PLANTERS AND POTS TO BE IRRIGATED OFF MAINS WATER USING POP-UP SPRAYERS. PIPEWORK TO BE CONCEALED BENEATH PLANTERS.
 - POTS, PLANTERS AND DRAINAGE TO ARCHITECT'S SPECIFICATION.

DEPARTMENT OF PLANNING, LANDS AND HERITAGE	
DATE	FILE
18-Aug-2023	SDAU-059-22



PM09: LEVEL 07 COMMUNAL BALCONY
4/M²

PM10: LEVEL 02-07 PRIVATE BALCONIES



CASUARINA GLAUCA,
COUSIN IT CASUARINA
H: 0.4M X W: 0.6M



LOMANDRA SPP,
LOMANDRA
H: 1M X W: 1M



JUNIPERUS HORIZONTALIS,
BLUE RUG JUNIPER
H: 0.4M X W: 1M



FICUS ELASTICA,
RUBBER PLANT
H: 1M X W: 2M



OPUNTIA FICUS INDICA,
INDIAN FIG
H: 2M X W: 2M



DICHONDRA ARGENTEA,
DICHONDRA SILVER FALLS
H: 0.2M X W: 1M

UDLA

LEVEL 1A, 3-5 JOSEPHSON STREET, FREMANTLE, 6160
08 9336 7577

PROJECT
BAY VIEW TERRACE

DRAWING
DA LEVEL 07 LANDSCAPE PLAN

DRAWING NUMBER
L04

ISSUE DATE
JULY 2023

REVISION
A

SCALE
1:200 @ A2

DRAWN BY
AS

PM01: WINDOW BOX PLANTING



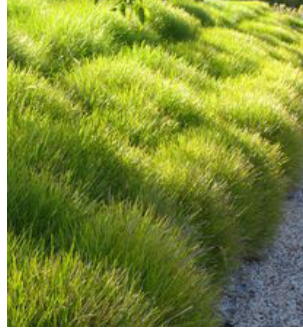
LIGULARIA RENIFORMIS,
TRACTOR SEAT PLANT
H: 0.2M X W: 2M



HEBBERTIA SCANDENS,
SNAKE VINE
H: 10M X W: 5M



LIGULARIA RENIFORMIS,
TRACTOR SEAT PLANT
H: 0.2M X W: 2M



LOMANDRA SPP,
LOMANDRA
H: 1M X W: 1M



BANKSIA BLECHNIFOLIA,

H: 1M X W: 0.5M



HEBBERTIA SCANDENS,
SNAKE VINE
H: 10M X W: 5M



FICUS PUMILA,
CREEPING FIG
H: 5M X W: 1M

PM03: TERRACE PLANTING



DICHONDRA RIPENS,
DICHONDRA
H: 0.2M X W: 1.2M



BANKSIA BLECHNIFOLIA,

H: 1M X W: 0.5M



MAMMILLARIA MUEHLENPFORDTII,
GOLDEN PINCUSHION CACTUS
H: 0.2M X W: 0.2M



SANTOLINA CHAMAECYPARISSUS,
COTTON LAVENDER
H: 0.4M X W: 0.4M



ASPARAGUS DENSIFLORUS,
ASPARAGUS FERN
H: 0.5M X W: 0.5M



LOMANDRA LONGIFOLIA,
LOMANDRA
H: 1M X W: 1M



FICUS PUMILA,
CREEPING FIG
H: 5M X W: 1M

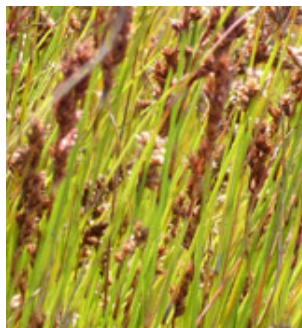


TRACHELOSPERMUM JASMINOIDES,
STAR JASMINE
H: 5M X W: 1M

PM04: CLIMBING PLANTS



HEBBERTIA SCANDENS,
SNAKE VINE
H: 10M X W: 5M



BAUMEA JUNCEA,
BARE TWIGRUSH
H: 0.2M X W: 1.2M



BAUMEA PREISSII,
SOFT TWIG RUSH
H: 0.2M X W: 2M



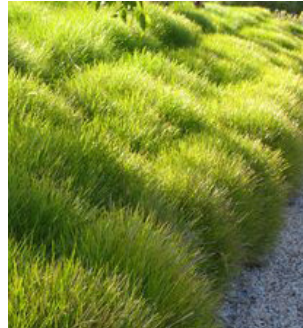
DAMPIERA LINEARIS,
COMMON DAMPIERA
H: 1M X W: 1M



FICINIA NODOSA,
CLUB RUSH
H: 1M X W: 1M



JUNCUS PALLIDUS,
PALE RUSH
H: 1M X W: 2M



LOMANDRA SPP,
LOMANDRA
H: 1M X W: 1M



LOMANDRA LONGIFOLIA,
LOMANDRA
H: 1M X W: 2M



ACACIA SALIGNA PROSTRATE,
WATTLE
H: 10M X W: 5M



DICHONDRA ARGENTEA,
DICHONDRA SILVER FALLS
H: 0.2M X W: 1M

PM07: SECRET GARDEN



VIOLA HEDERACEA,
NATIVE VIOLET
H: 0.2M X W: 1.2M



LIGULARIA RENIFORMIS,
TRACTOR SEAT PLANT
H: 0.2M X W: 2M



PENNISETUM SP,
PURPLE FOUNTAIN GRASS
H: 10M X W: 5M



BANKSIA BLECHNIFOLIA,

H: 1M X W: 0.5M



CASUARINA GLAUCA,
COUSIN IT CASUARINA
H: 0.4M X W: 0.6M



JUNIPERUS COMMUNIS,
JUNIPER BERRY
H: 1M X W: 2M

PM09: LEVEL 07 COMMUNAL BALCONY



CASUARINA GLAUCA,
COUSIN IT CASUARINA
H: 0.4M X W: 0.6M



LOMANDRA SPP,
LOMANDRA
H: 1M X W: 1M



JUNIPERUS HORIZONTALIS,
BLUE RUG JUNIPER
H: 0.4M X W: 1M



FICUS ELASTICA,
RUBBER PLANT
H: 1M X W: 2M



OPUNTIA FICUS INDICA,
INDIAN FIG
H: 2M X W: 2M



DICHONDRA ARGENTEA,
DICHONDRA SILVER FALLS
H: 0.2M X W: 1M

TREES AND FEATURE PLANTING



BANKSIA ASHBYI,
ASHBY'S BANKSIA
H: 6M X W: 2M



OPUNTIA FICUS INDICA,
INDIAN FIG
H: 2M X W: 2M



XANTHORROHEA PRESISSI,
GRASS TREE
H: 2M X W: 1M



BRACHYCHITON RUPESTRIS,
QUEENSLAND BOTTLE TREE
H: 10M X W: 5M



MELALEUCA RHAPHIOPHYLLA,
SWAMP PAPERBARK
H: 10M X W: 5M



MELALEUCA QUINQUENERVIA,
BROAD-LEAVED PAPERBARK
H: 10M X W: 5M

PM06: TRAILING PLANTS

PM08: DRYLAND PLANTING



BANKSIA NIVEA,
HONEYPOT DRYANDRA
H: 1M X W: 1M



CALOTHAMNUS HIRSUTUS,
HAIRY CLAW FLOWER
H: 1.5M X W: 1.5M



CALOTHAMNUS QUADRIFIDUS,
ONE SIDED BOTTLEBRUSH
H: 2.5M X W: 2.5M



HYPOCALYMMMA ANGUSTIFOLIUM,
WHITE MYRTLE
H: 1M X W: 1M



MELALEUCA HUEGLII,
CHENILLE HONEY-MYRTLE
H: 2M X W: 4M



LEPIDOSPERMA LONGITUDINALE,
PITHY SWORD SEDGE
H: 0.5M X W: 2M

UDLA

LEVEL 1A, 3-5 JOSEPHSON STREET, FREMANTLE, 6160
08 9336 7577

PROJECT
BAY VIEW TERRACE

DRAWING
DA PLANT SCHEDULE

DRAWING NUMBER
L05

ISSUE DATE
JULY 2023

REVISION
A

SCALE
1:200 @ A2

DRAWN BY
AS