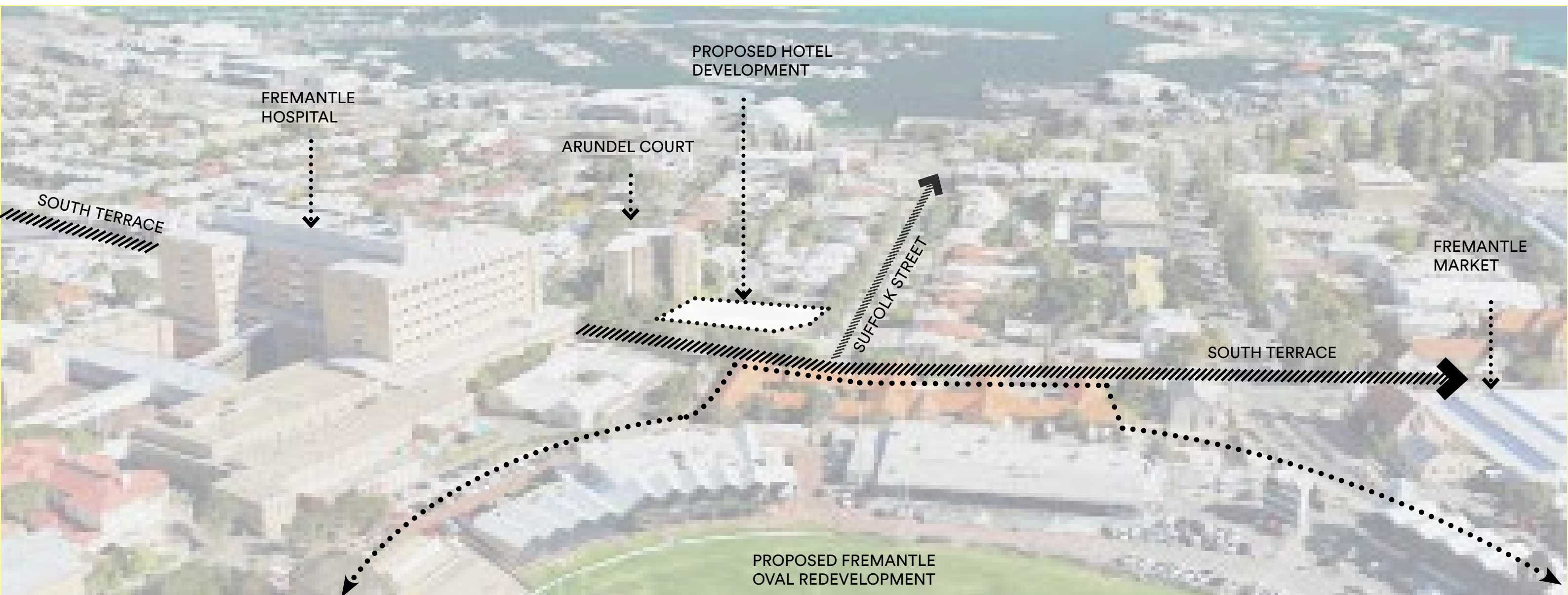


DEPARTMENT OF PLANNING, LANDS AND HERITAGE	
DATE	FILE
03-Mar-2021	SDAU-026-20

PROPOSED HOTEL DEVELOPMENT

65 South Street, Fremantle
Development Application 11th February 2021





The project sits within a future city centre node and presents an opportunity to compliment the scale proposed for the Fremantle Oval redevelopment creating a gateway precinct between the Fremantle City Centre and South Fremantle.

The building seeks to resonate with a unique set of local Architectural circumstances the Fremantle Hospital and Arundal Court. It references these works in terms of scale and materiality but moves further into a finer grain and tactile reading of the wider commercial and residential surrounds.



Fremantle Hospital looking South



Arundel Court looking North



PROPOSED FREMANTLE
OVAL REDEVELOPMENT

Aerial view of the Site looking South



PROPOSED FREMANTLE
OVAL REDEVELOPMENT

Aerial view of proposed development looking South



Aerial view of the Site looking West



Aerial view of proposed development looking West



Aerial view of the Site looking North



Aerial view of proposed development looking North

H — J A

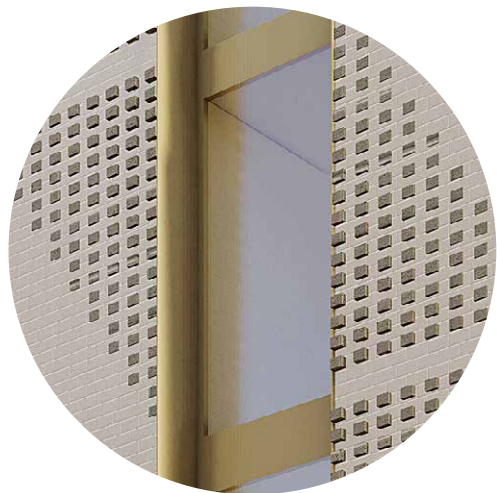


DEPARTMENT OF PLANNING, LANDS AND HERITAGE	
DATE	FILE
03-Mar-2021	SDAU-026-20

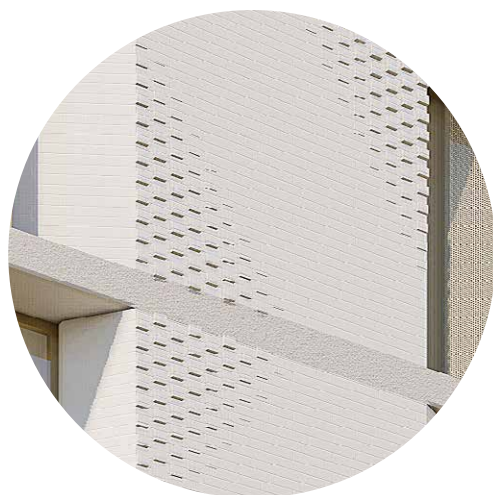


Elevation view of proposed development from South Terrace looking North

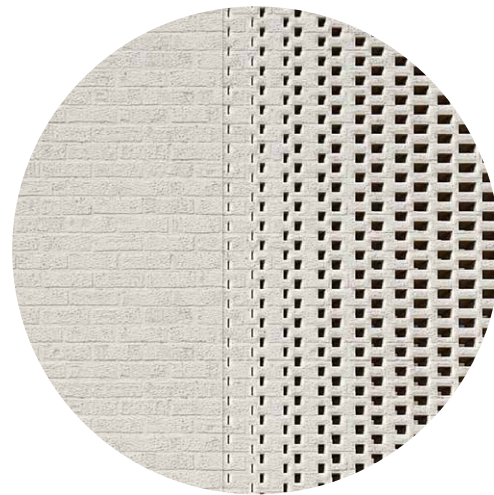
BRICKWORK DETAILS



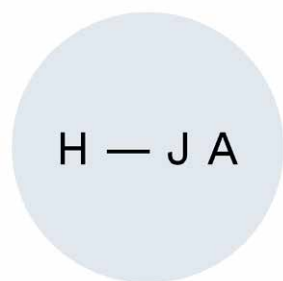
Hotel passage



Patterned brick wall detail



Lift lobby brick screen detail





Elevation view of proposed development from South Terrace





Elevation view of proposed development from South Terrace looking South



DEPARTMENT OF PLANNING, LANDS AND HERITAGE	
DATE	FILE
03-Mar-2021	SDAU-026-20



Elevation view of proposed development from the corner of South terrace and Suffolk Street

DETAILS



Aluminium sunshade screen detail (single screen)



Aluminium sunshade screen detail (double screen)



Mosaic wall tiles

H — J A



DEPARTMENT OF PLANNING, LANDS AND HERITAGE	
DATE	FILE
03-Mar-2021	SDAU-026-20



Elevation view of proposed development from Suffolk Street

DETAILS



Curved corner windows and slab detail



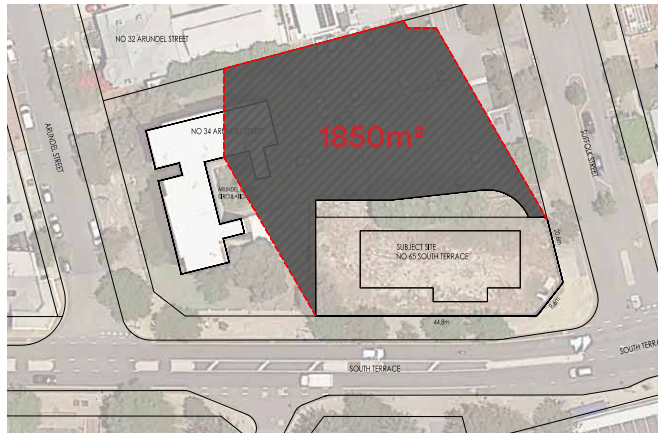
Glass Juliet balcony (West elevation)



DEPARTMENT OF PLANNING, LANDS AND HERITAGE	
DATE	FILE
03-Mar-2021	SDAU-026-20

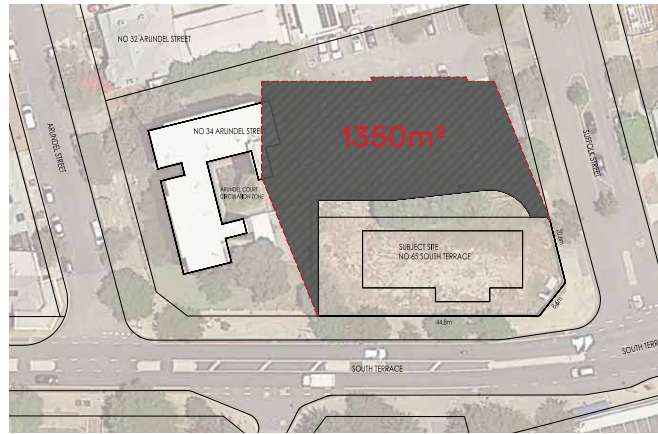
10AM

21 JUNE



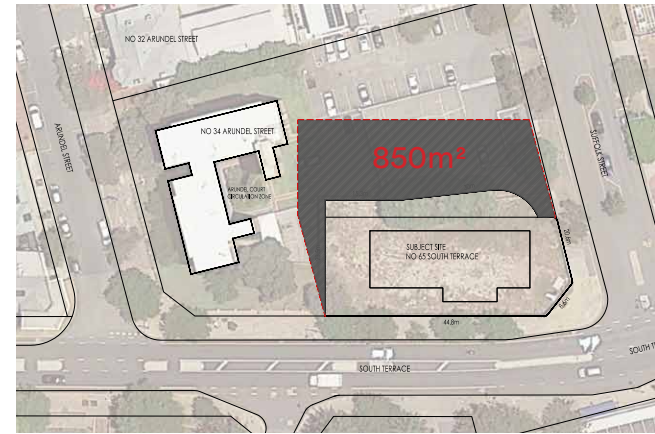
56% Overshadowing

22 AUGUST



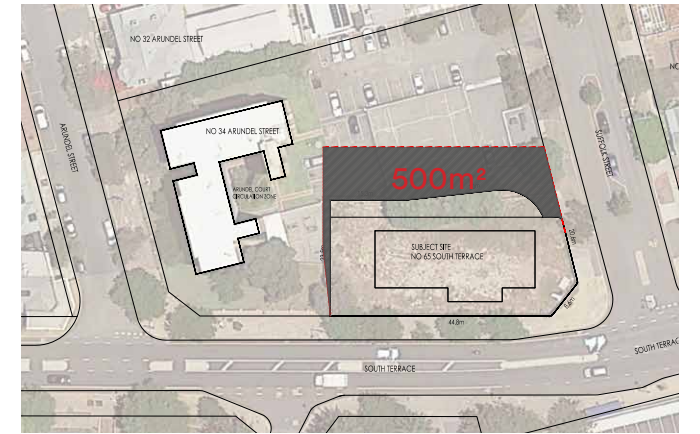
41% Overshadowing

22 SEPTEMBER



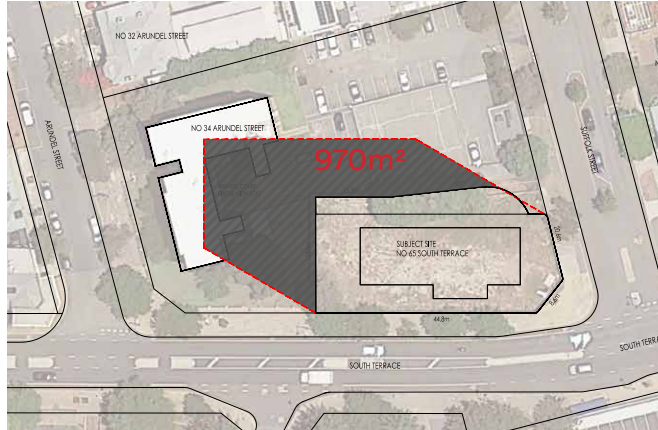
26% Overshadowing

22 OCTOBER

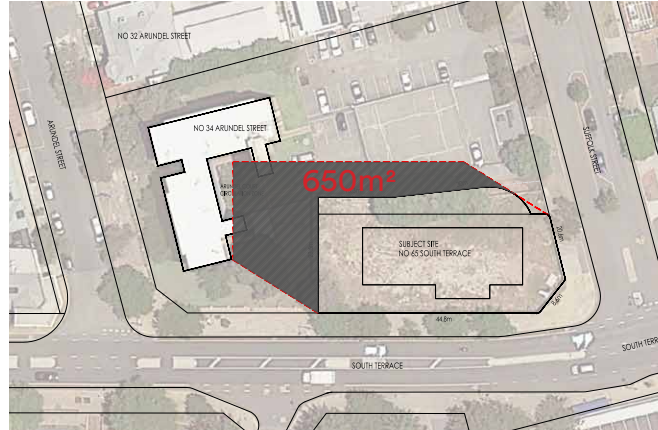


15% Overshadowing

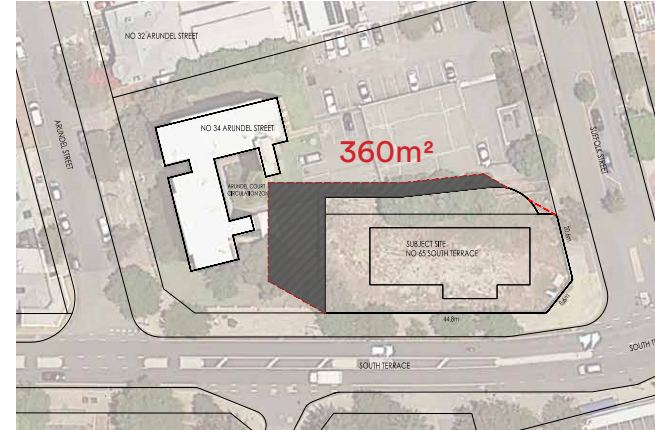
12PM



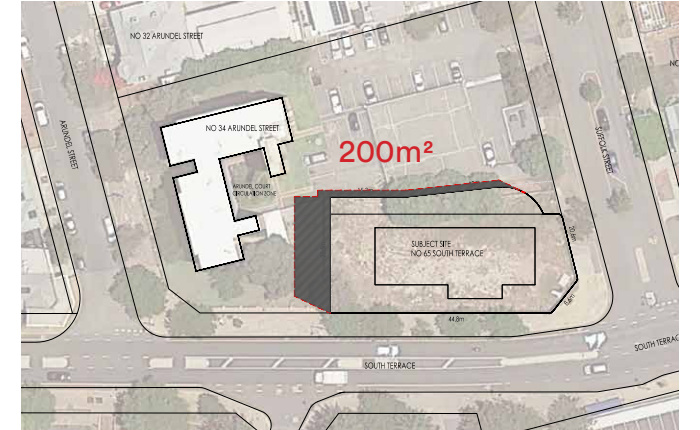
29% Overshadowing



20% Overshadowing

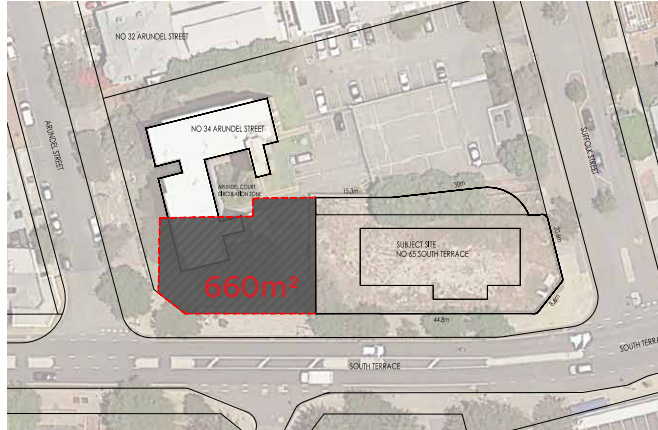


11% Overshadowing

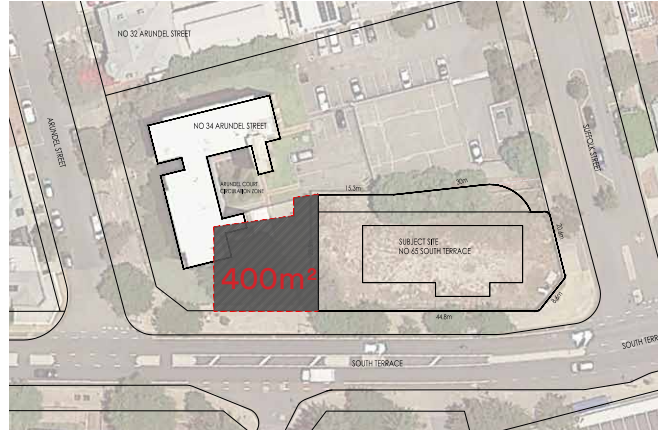


6% Overshadowing

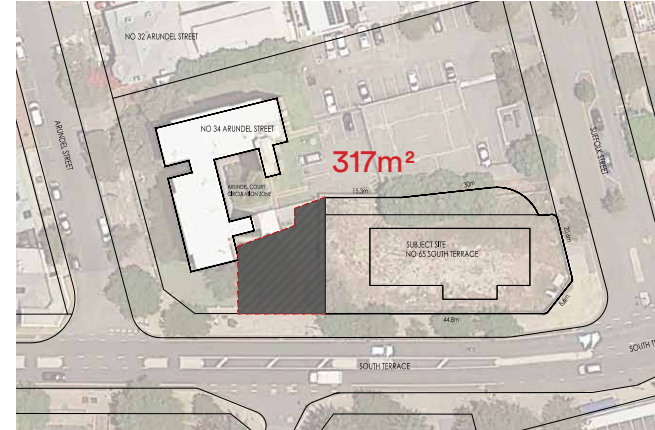
2PM



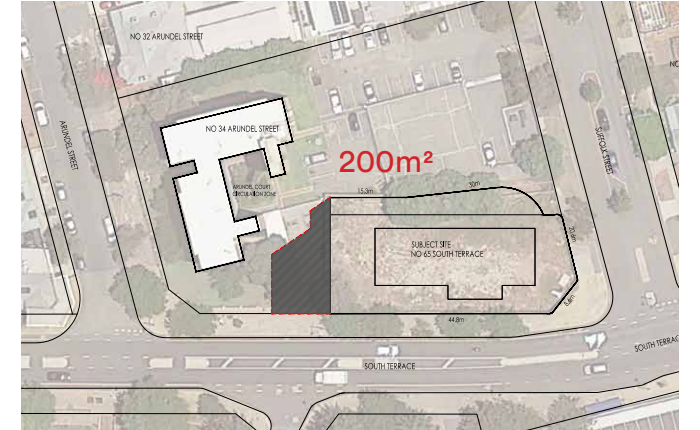
20% Overshadowing



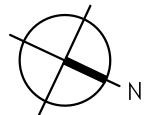
12% Overshadowing



10% Overshadowing



6% Overshadowing



OVERSHADOWING DIAGRAMS
Neighbouring lot area 3311m²

H — J A

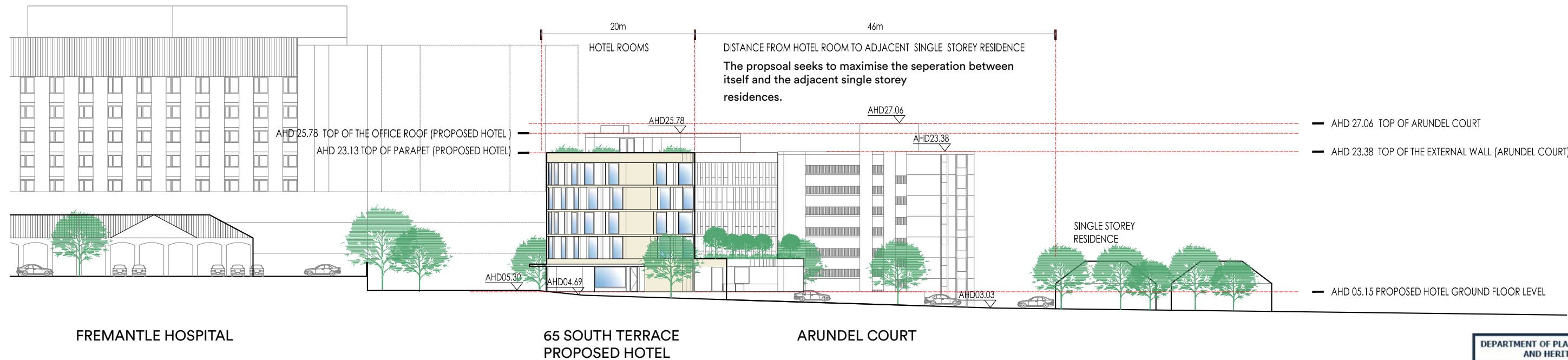


DEPARTMENT OF PLANNING, LANDS
AND HERITAGE
DATE 03-Mar-2021 FILE SDAU-026-20



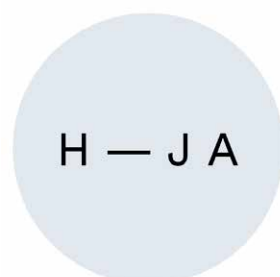


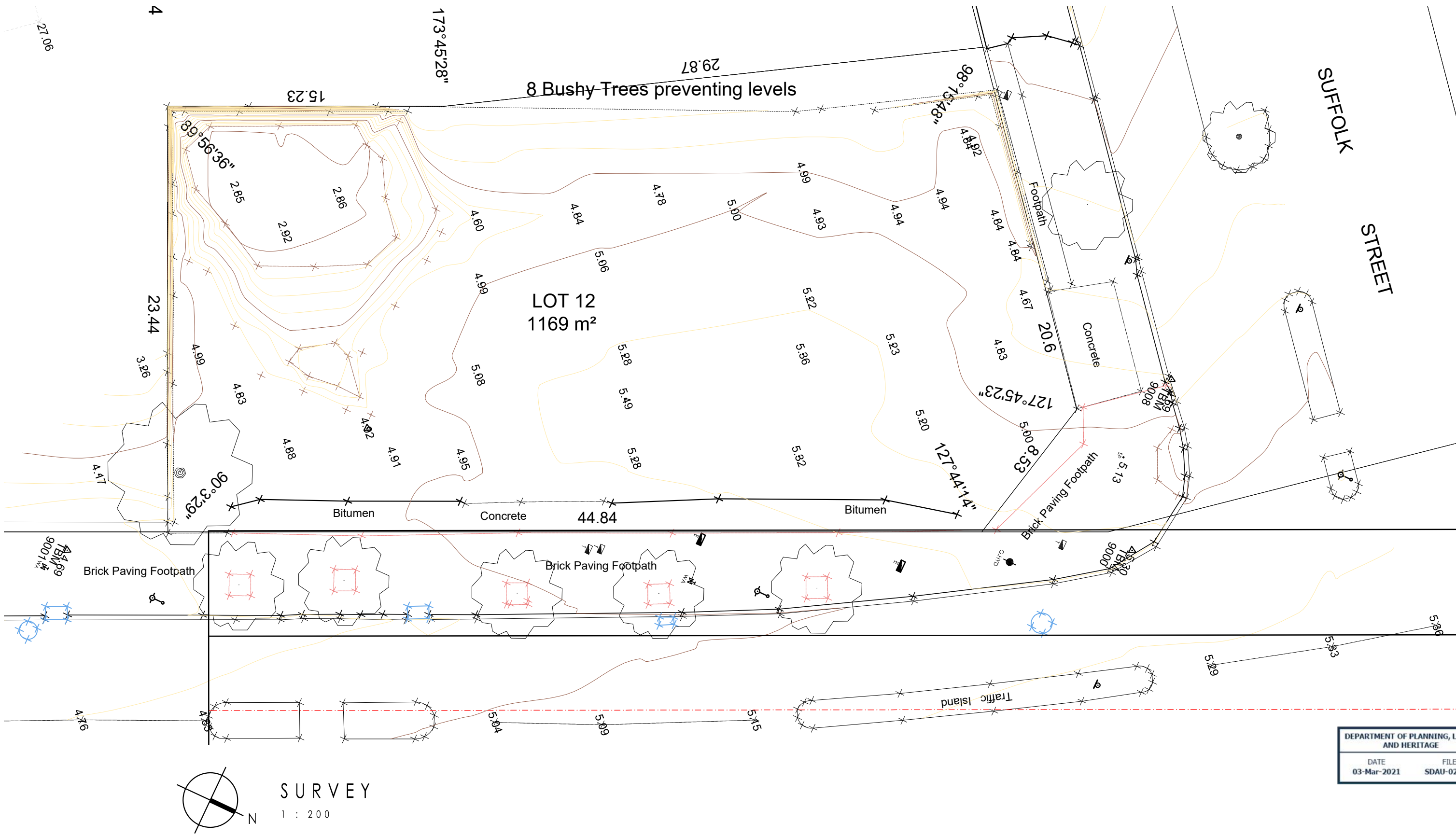
SOUTH TERRACE STREET ELEVATION
1:500



SUFFOLK STREET ELEVATION
1:500

DEPARTMENT OF PLANNING, LANDS AND HERITAGE	
DATE	FILE
03-Mar-2021	SDAU-026-20







DEPARTMENT OF PLANNING, LANDS AND HERITAGE			
DATE	FILE		
03-Mar-2021	SDAU-026-20		

 **SURVEY**
1 : 200

A1	ISSUED FOR DA	11.02.21
No.	REVISION	DATE



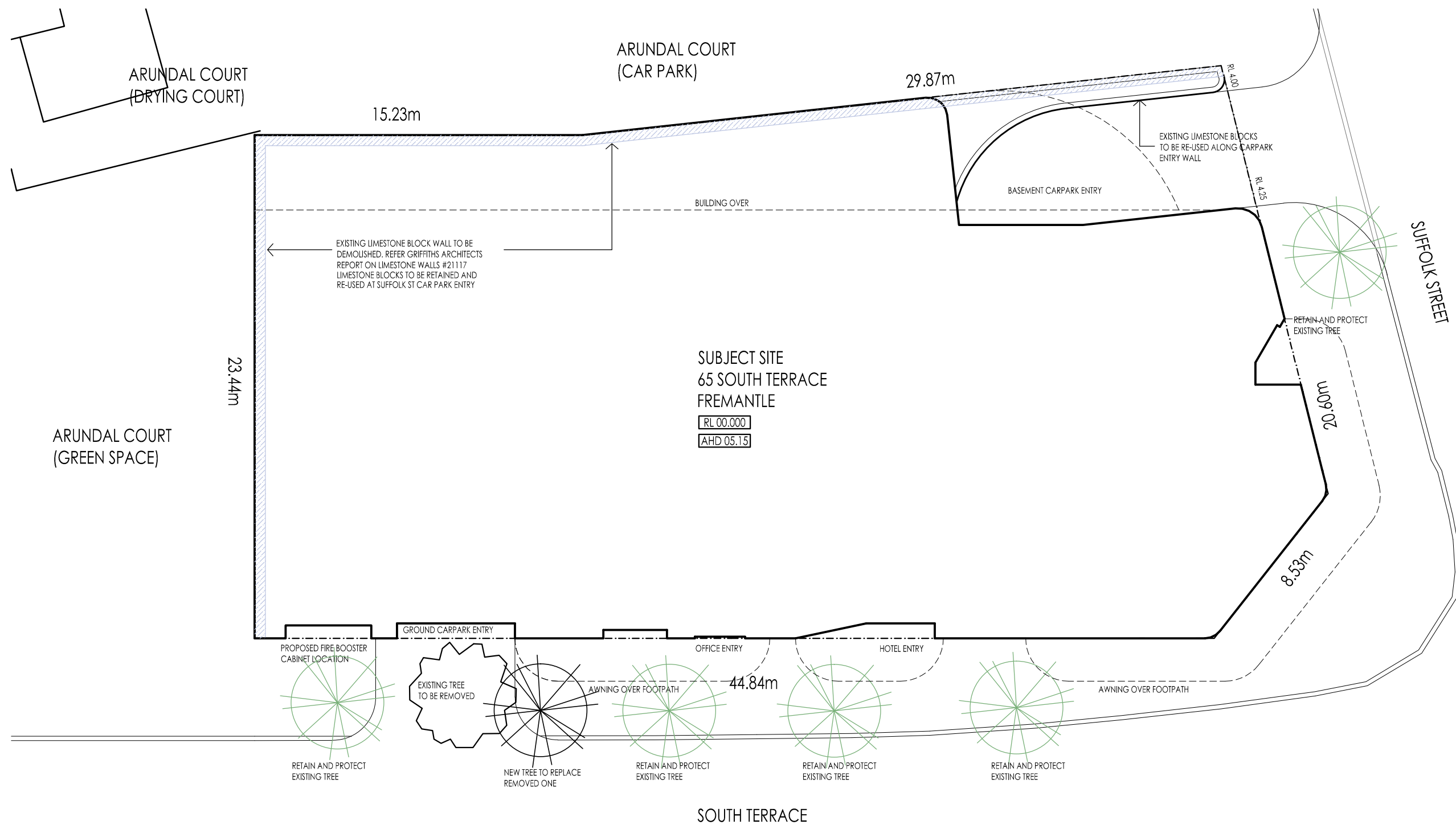
Harris — Jenkins Architects
ca. 4/1 High St Fremantle
pa. PO Box 647
Fremantle WA 6959
e. hello@harrisjenkins.com



YOLK
PROPERTY
GROUP

CONCEPT PLANS FOR
HOTEL DEVELOPMENT
65 SOUTH TERRACE FREMANTLE

JOB NO.	1617	ISSUE	REVISION	DRAWING
DRAWN	HJA	A	1	SK00
SCALE	1: 200			
DATE	21.01.2020			
THE DESIGN SHALL AT ALL TIMES REMAIN THE COPYRIGHT PROPERTY OF HARRIS JENKINS ARCHITECTS. WRITTEN CONSENT TO REPRODUCE THIS DESIGN IN EITHER TWO OR THREE DIMENSIONAL FORM MUST BE OBTAINED FROM HARRIS JENKINS ARCHITECTS				




 N

SITE PLAN

1 : 200


DEPARTMENT OF PLANNING, LANDS AND HERITAGE			
DATE	FILE		
03-Mar-2021	SDAU-026-20		

A3	ISSUED FOR DA	11.02.21
No.	REVISION	DATE



Harris — Jenkins Architects

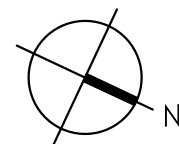
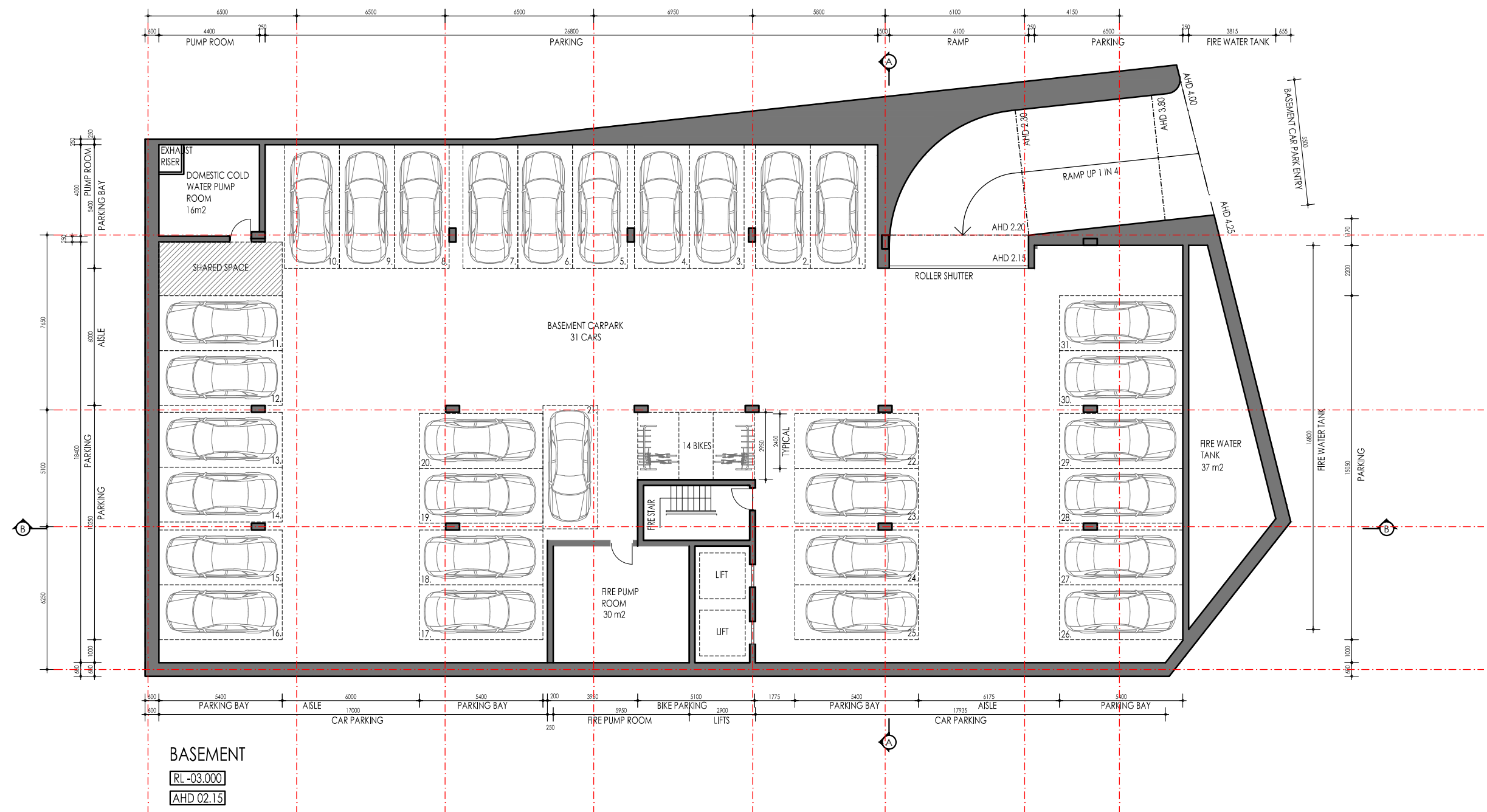
oa. 4/1 High St Fremantle
pa. PO Box 647
Fremantle WA 6959
e. hello@harrisjenkins.com



YOLK
PROPERTY
GROUP

CONCEPT PLANS FOR
HOTEL DEVELOPMENT
65 SOUTH TERRACE FREMANTLE

JOB NO.	1617	ISSUE	REVISION	DRAWING
DRAWN	HJA	A	3	SK01
SCALE	1: 200			
DATE	21.01.2020			
THIS DESIGN SHALL AT ALL TIMES REMAIN THE COPYRIGHT PROPERTY OF HARRIS JENKINS ARCHITECTS. WRITTEN CONSENT TO REPRODUCE THIS DESIGN IN EITHER TWO OR THREE DIMENSIONAL FORM MUST BE OBTAINED FROM HARRIS JENKINS ARCHITECTS				



BASEMENT PLAN
1 : 200

DEPARTMENT OF PLANNING, LANDS AND HERITAGE			
DATE	FILE		
03-Mar-2021	SDAU-026-20		

No.	REVISION	DATE
A10	ISSUED FOR DA	11.02.21

Harris — Jenkins Architects

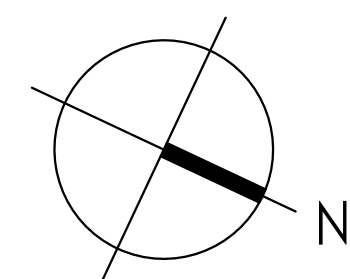
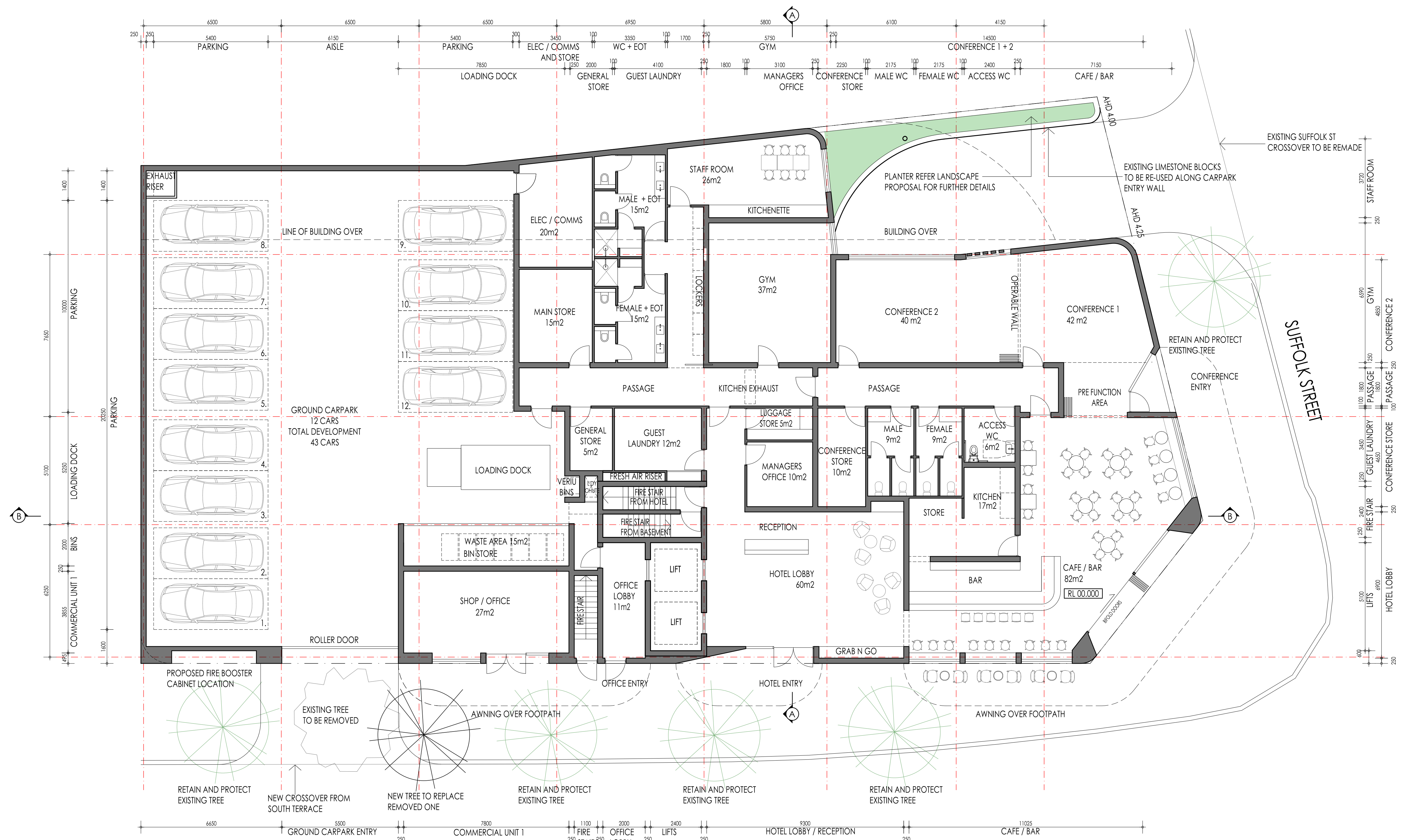
oa. 4/1 High St Fremantle
pa. PO Box 647
Fremantle WA 6959
e. hello@harrisjenkins.com

YOLK PROPERTY GROUP

CONCEPT PLANS FOR
HOTEL DEVELOPMENT
65 SOUTH TERRACE FREMANTLE

JOB NO.	1617	ISSUE	REVISION	DRAWING
DRAWN	HJA	A	10	SK02
SCALE	1: 200			
DATE	21.01.2020			

THIS DESIGN SHALL AT ALL TIMES REMAIN THE COPYRIGHT PROPERTY OF HARRIS JENKINS ARCHITECTS. WRITTEN CONSENT TO REPRODUCE THIS DESIGN IN EITHER TWO OR THREE DIMENSIONAL FORM MUST BE OBTAINED FROM HARRIS JENKINS ARCHITECTS



GROUND FLOOR PLAN

1 : 200

No.	REVISION	DATE
A11	RE ISSUED FOR DA	11.02.21
A10	ISSUED FOR DA	11.02.21

H — J A

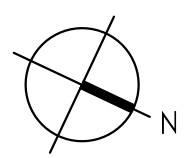
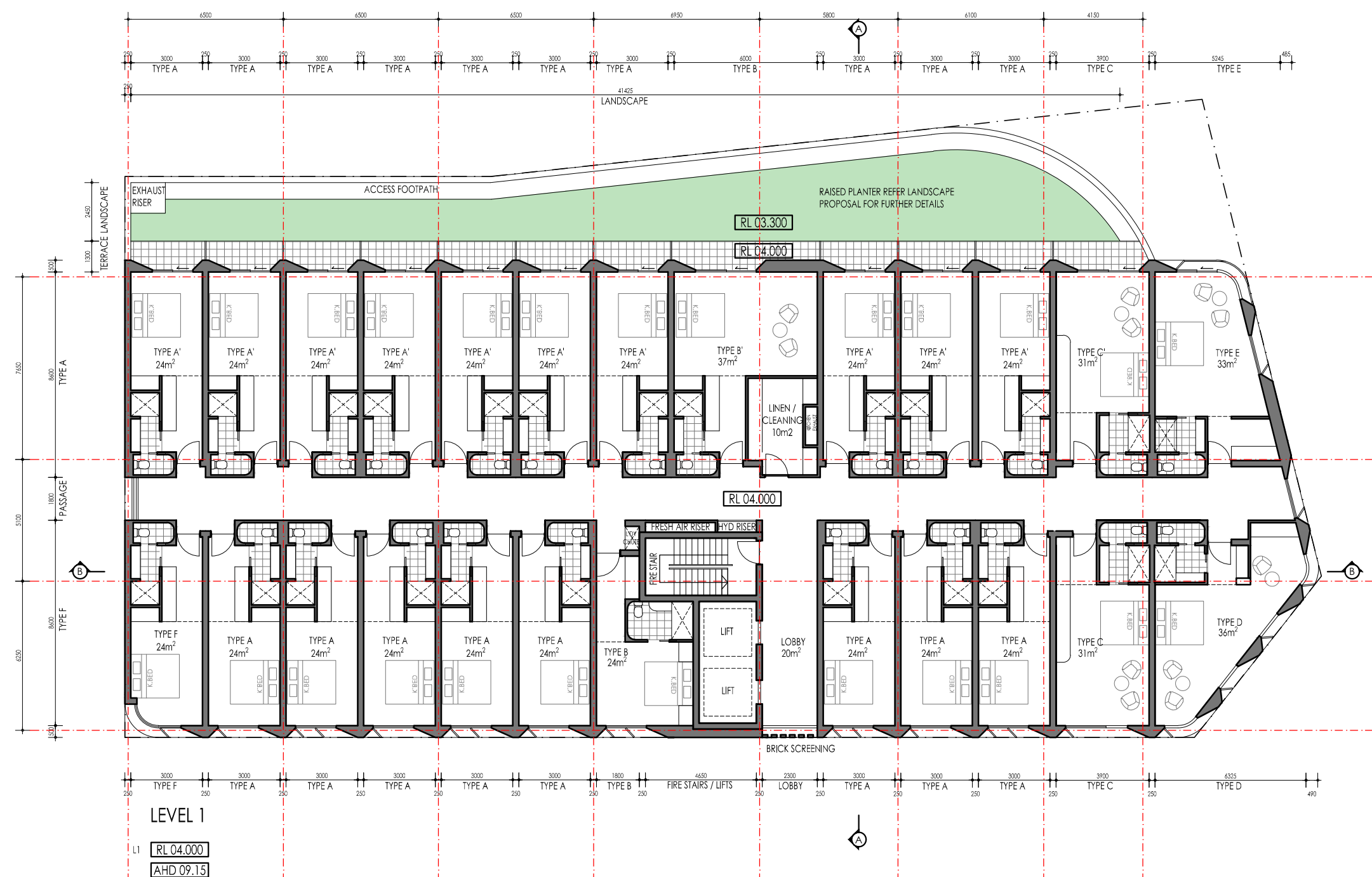
Harris — Jenkins Architects

ca. 4/1 High St Fremantle
pa. PO Box 647
Fremantle WA 6959
e. hello@harrisjenkins.com



CONCEPT PLANS FOR
HOTEL DEVELOPMENT
65 SOUTH TERRACE FREMANTLE


JOB NO.	1617	ISSUE	A	REVISION	11	DRAWING	SK03
DRAWN	HJA	SCALE	1:200	DATE	21.01.2020	THIS DESIGN SHALL AT ALL TIMES REMAIN THE COPYRIGHT PROPERTY OF HARRIS JENKINS ARCHITECTS. WRITTEN CONSENT TO REPRODUCE THIS DESIGN IN EITHER TWO OR THREE DIMENSIONAL FORM MUST BE OBTAINED FROM HARRIS JENKINS ARCHITECTS	



1ST FLOOR PLAN
1 : 200

DEPARTMENT OF PLANNING, LANDS AND HERITAGE			
DATE	FILE		
03-Mar-2021	SDAU-026-20		

A11	ISSUED FOR DA	11.02.21
No.	REVISION	DATE



H — J A

Harris — Jenkins Architects

ca. 4/1 High St Fremantle
pa. PO Box 647
Fremantle WA 6959
e. hello@harrisjenkins.com

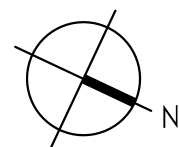
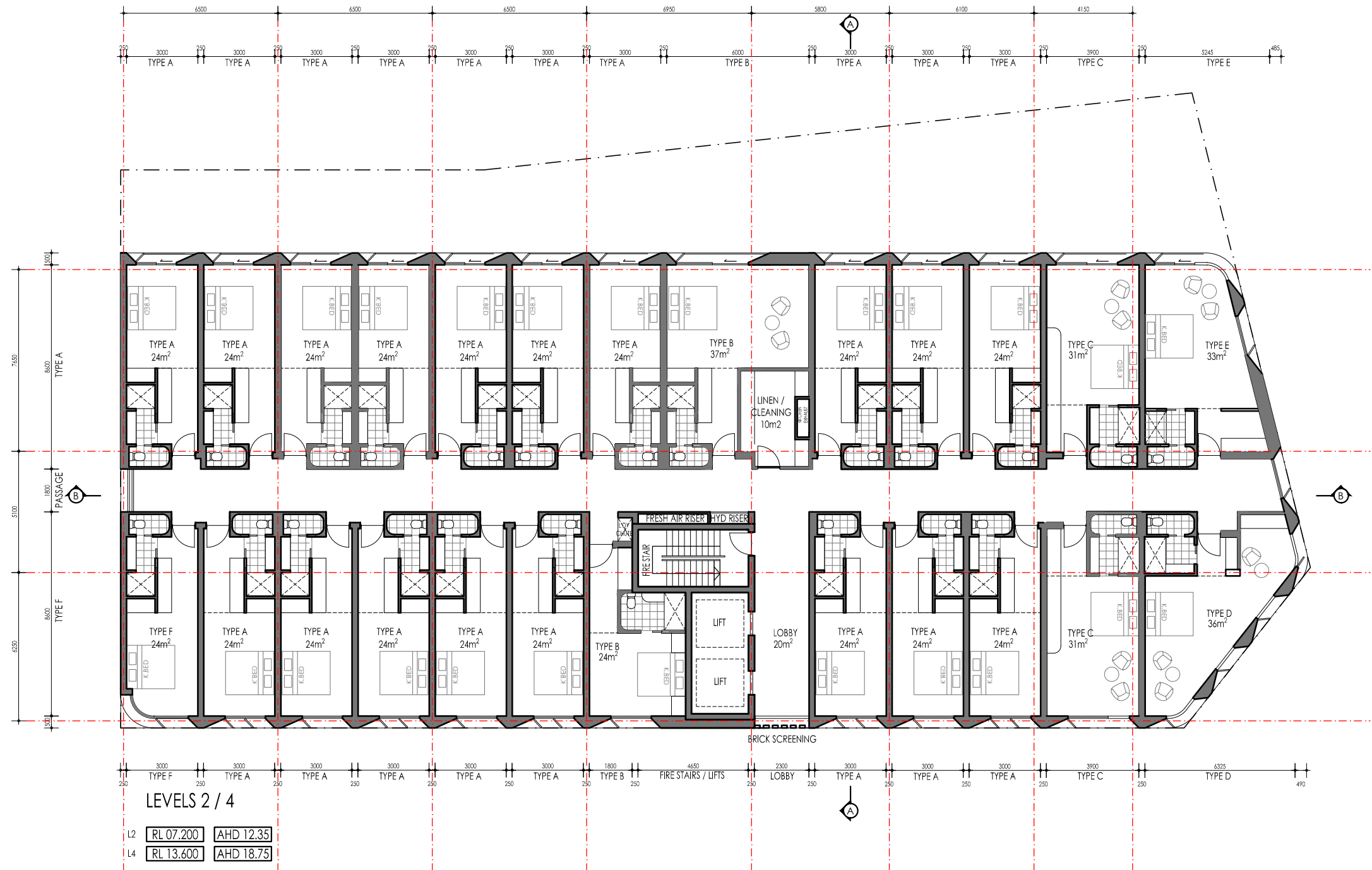


YOLK

PROPERTY GROUP

CONCEPT PLANS FOR
HOTEL DEVELOPMENT
65 SOUTH TERRACE FREMANTLE

JOB NO.	1617	ISSUE	REVISION	DRAWING
DRAWN	HJA	A	11	SK04
SCALE	1: 200			
DATE	25.01.2021			
THIS DESIGN SHALL AT ALL TIMES REMAIN THE COPYRIGHT PROPERTY OF HARRIS JENKINS ARCHITECTS. WRITTEN CONSENT TO REPRODUCE THIS DESIGN IN EITHER TWO OR THREE DIMENSIONAL FORM MUST BE OBTAINED FROM HARRIS JENKINS ARCHITECTS				



2ND/4TH FLOOR PLAN

1 : 200

DEPARTMENT OF PLANNING, LANDS AND HERITAGE			
DATE	FILE		
03-Mar-2021	SDAU-026-20		

A9	ISSUED FOR DA	11.02.21
No.	REVISION	DATE

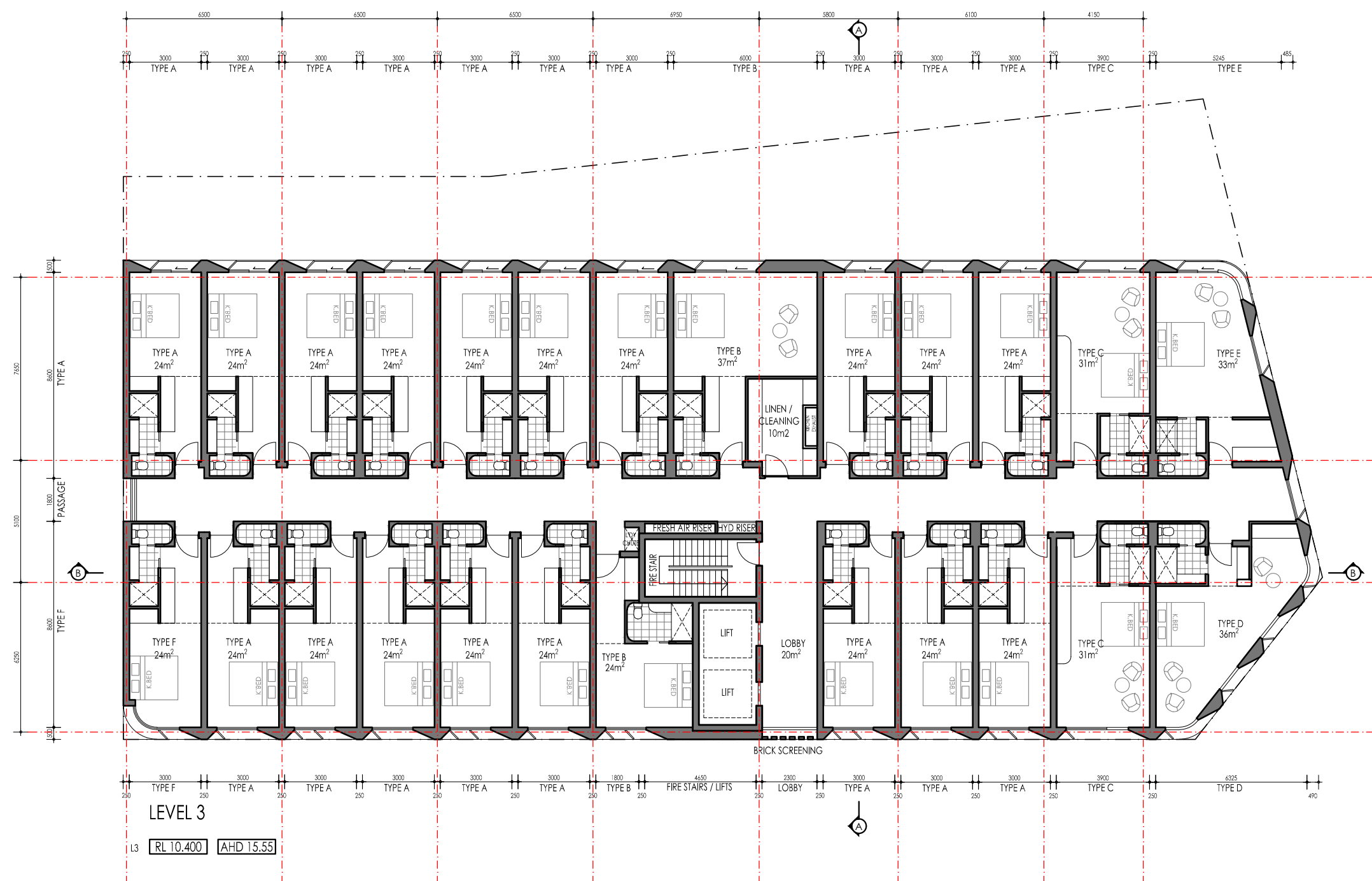
Harris — Jenkins Architects

ea. 4/1 High St Fremantle
pa. PO Box 647
Fremantle WA 6959
e. hello@harrisjenkins.com



CONCEPT PLANS FOR
HOTEL DEVELOPMENT
65 SOUTH TERRACE FREMANTLE

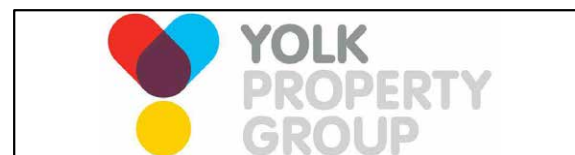
JOB NO.	1617	ISSUE	REVISION	DRAWING
DRAWN	HJA	A	9	SK05
SCALE	1: 200			
DATE	20.01.2020			
THIS DESIGN SHALL AT ALL TIMES REMAIN THE COPYRIGHT PROPERTY OF HARRIS JENKINS ARCHITECTS. WRITTEN CONSENT TO REPRODUCE THIS DESIGN IN EITHER TWO OR THREE DIMENSIONAL FORM MUST BE OBTAINED FROM HARRIS JENKINS ARCHITECTS				



DEPARTMENT OF PLANNING, LANDS AND HERITAGE			
DATE	FILE		
03-Mar-2021	SDAU-026-20		

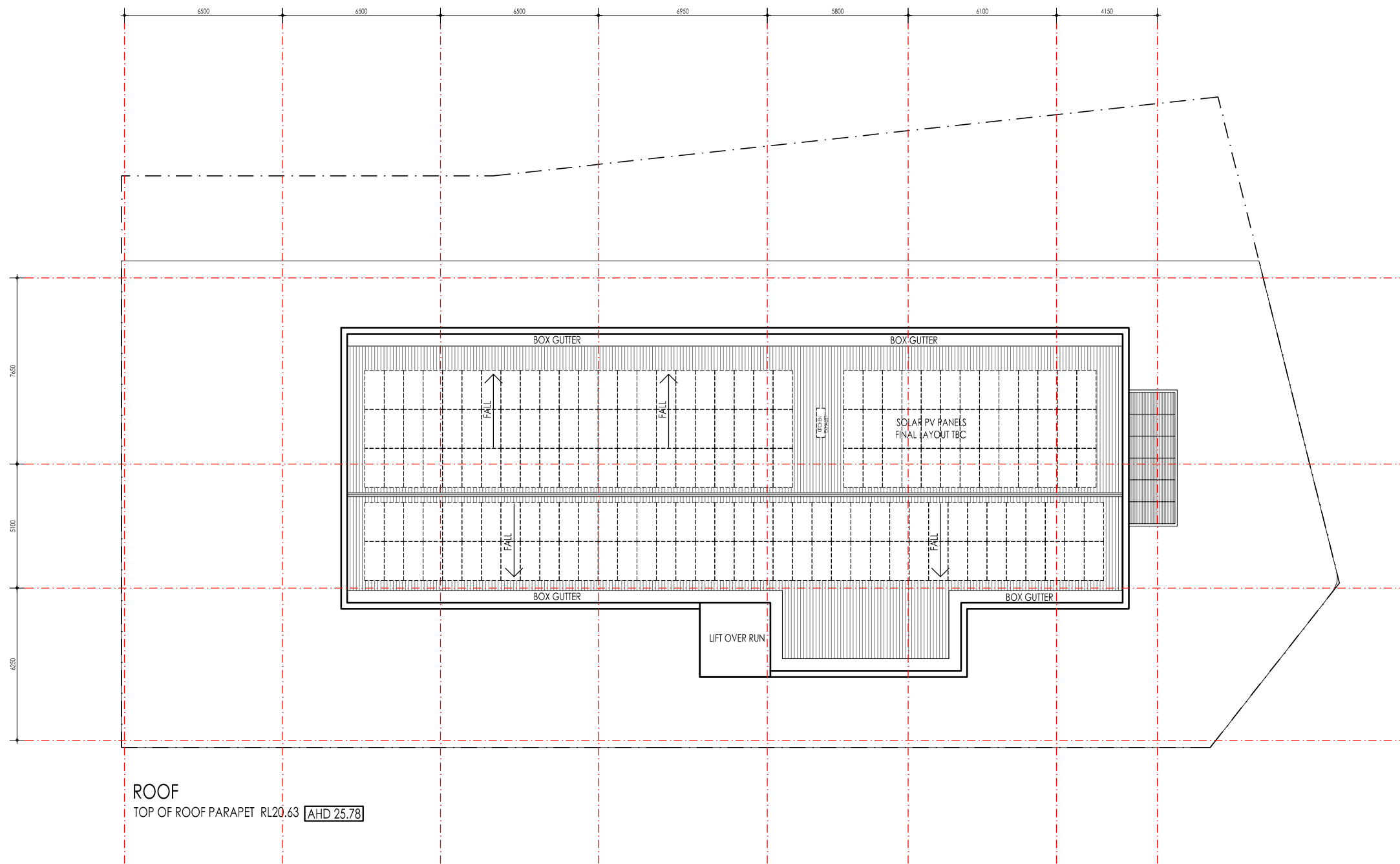
No.	REVISION	DATE
A9	ISSUED FOR DA	11.02.21

H — J A		Harris — Jenkins Architects
		ca. 4/1 High St Fremantle pa. PO Box 647 Fremantle WA 6959 e. hello@harrisjenkins.com

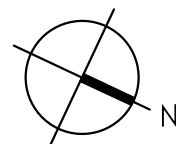


CONCEPT PLANS FOR
HOTEL DEVELOPMENT
65 SOUTH TERRACE FREMANTLE

JOB NO.	1617	ISSUE	REVISION	DRAWING
DRAWN	HJA	A	9	SK06
SCALE	1: 200			
DATE	20.01.2020			
THE DESIGN SHALL AT ALL TIMES REMAIN THE COPYRIGHT PROPERTY OF HARRIS JENKINS ARCHITECTS. WRITTEN CONSENT TO REPRODUCE THIS DESIGN IN EITHER TWO OR THREE DIMENSIONAL FORM MUST BE OBTAINED FROM HARRIS JENKINS ARCHITECTS				




ROOF
TOP OF ROOF PARAPET RL20.63 [AHD 25.78]



ROOF PLAN
1 : 200


DEPARTMENT OF PLANNING, LANDS AND HERITAGE			
DATE	FILE		
03-Mar-2021	SDAU-026-20		

A8	ISSUED FOR DA	11.02.21
No.	REVISION	DATE



Harris — Jenkins Architects

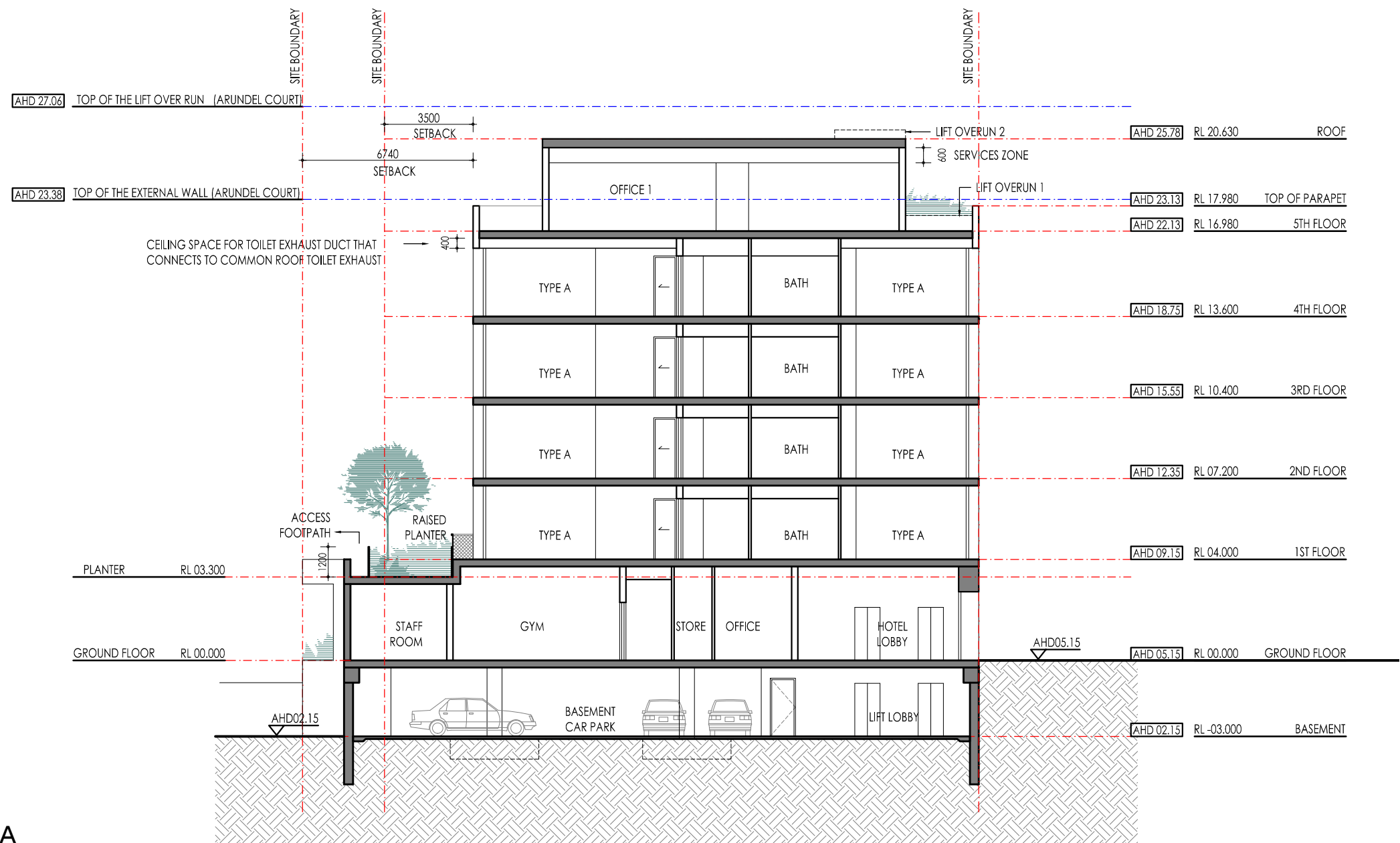
ca. 4/1 High St Fremantle
pa. PO Box 647
Fremantle WA 6959
e. hello@harrisjenkins.com



YOLK
PROPERTY
GROUP

CONCEPT PLANS FOR
HOTEL DEVELOPMENT
65 SOUTH TERRACE FREMANTLE

JOB NO.	1617	ISSUE	REVISION	DRAWING
DRAWN	JTH	A	8	SK08
SCALE	1: 200			
DATE	21.01.2020			
THIS DESIGN SHALL AT ALL TIMES REMAIN THE COPYRIGHT PROPERTY OF HARRIS JENKINS ARCHITECTS. WRITTEN CONSENT TO REPRODUCE THIS DESIGN IN EITHER TWO OR THREE DIMENSIONAL FORM MUST BE OBTAINED FROM HARRIS JENKINS ARCHITECTS				



SECTION A-A
1:200

DEPARTMENT OF PLANNING, LANDS AND HERITAGE			
DATE	FILE		
03-Mar-2021	SDAU-026-20		

A3	ISSUED FOR DA	11.02.21
A2	ISSUED TO LANDSCAPE ARCHITECTS	25.01.21
A1	CONSULTANT REVIEW	02.11.20
No.	REVISION	DATE

H — J A

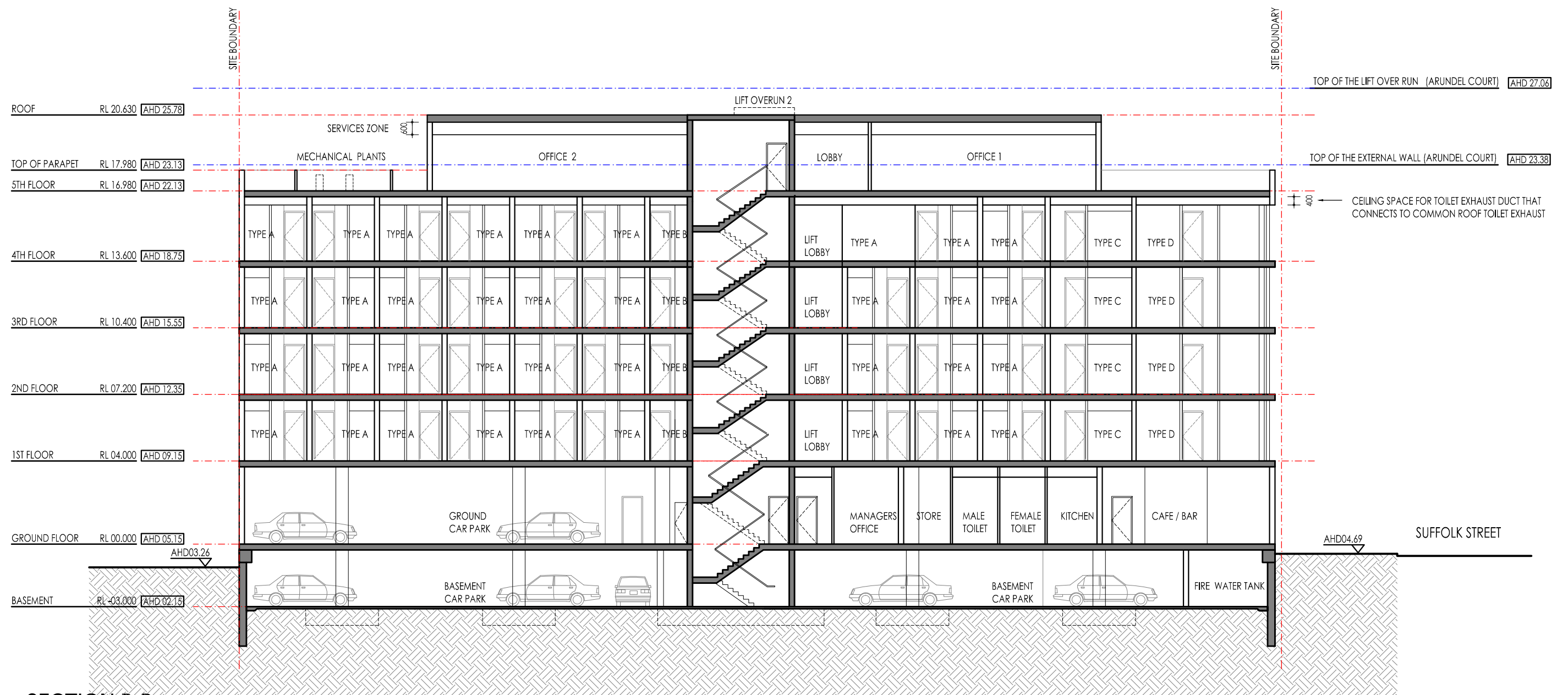
Harris — Jenkins Architects

oa. 4/1 High St Fremantle
pa. PO Box 647
Fremantle WA 6959
e. hello@harrisjenkins.com

YOLK
PROPERTY
GROUP

CONCEPT PLANS FOR
HOTEL DEVELOPMENT
65 SOUTH TERRACE FREMANTLE

JOB NO.	1617	ISSUE	REVISION	DRAWING
DRAWN	HJA	A	3	SK09
SCALE	AS SHOWN			
DATE	25.01.2021			
THIS DESIGN SHALL AT ALL TIMES REMAIN THE COPYRIGHT PROPERTY OF HARRIS JENKINS ARCHITECTS. WRITTEN CONSENT TO REPRODUCE THIS DESIGN IN EITHER TWO OR THREE DIMENSIONAL FORM MUST BE OBTAINED FROM HARRIS JENKINS ARCHITECTS				



SECTION B-B
1:200

DEPARTMENT OF PLANNING, LANDS AND HERITAGE				
DATE	FILE			
03-Mar-2021	SDAU-026-20			

A2	ISSUED FOR DA	11.02.21
A1	CONSULTANT REVIEW	02.11.20
No.	REVISION	DATE

H — J A

Harris — Jenkins Architects

oa. 4/1 High St Fremantle
pa. PO Box 647
Fremantle WA 6959
e. hello@harrisjenkins.com

YOLK
PROPERTY
GROUP

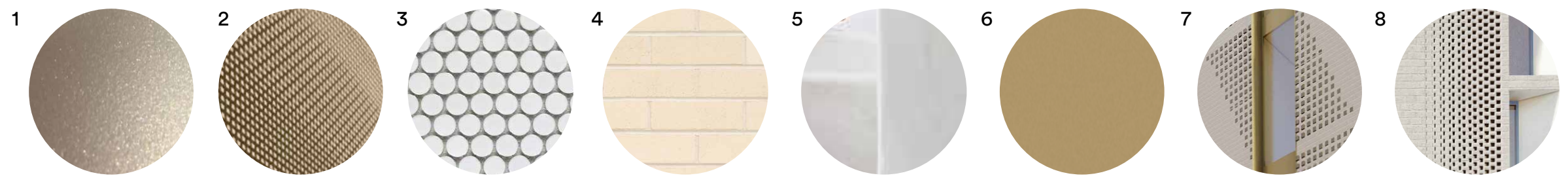
CONCEPT PLANS FOR
HOTEL DEVELOPMENT
65 SOUTH TERRACE FREMANTLE

JOB NO.	1617	ISSUE	REVISION	DRAWING
DRAWN	HJA	A	2	SK10
SCALE	AS SHOWN			
DATE	21.01.2020			
THE DESIGN SHALL AT ALL TIMES REMAIN THE COPYRIGHT PROPERTY OF HARRIS JENKINS ARCHITECTS. WRITTEN CONSENT TO REPRODUCE THIS DESIGN IN EITHER TWO OR THREE DIMENSIONAL FORM MUST BE OBTAINED FROM HARRIS JENKINS ARCHITECTS				



FINISHES SCHEDULE


1. DULUX POWDERCOAT AWNINGS AND GROUND FLOOR WINDOW / DOOR FRAMES COLOUR 'FRESH GOLD'
2. EXPANDED ALUMINIUM SUN SHADE SCREENS POWDERCOAT COLOUR 'GOLDEN TOUCH'
3. WHITE MOSAIC TILES
4. BOWRAL BRICKS COLOUR 'CHILLINGHAM WHITE'
5. LIME PLASTER WALL FINISH
6. DULUX POWDERCOAT ALUMINIUM WINDOW / DOOR FRAMES COLOUR 'GOLDEN TOUCH'
7. PATTERNED BRICKS
8. HIT AND MISS BRICK SCREEN



EAST ELEVATION
(PART NORTH)
1:200

DEPARTMENT OF PLANNING, LANDS AND HERITAGE			
DATE	FILE		
03-Mar-2021	SDAU-026-20		

A2	ISSUED FOR DA	11.02.21
A1	CONSULTANT REVIEW	02.11.20
No.	REVISION	DATE



Harris — Jenkins Architects

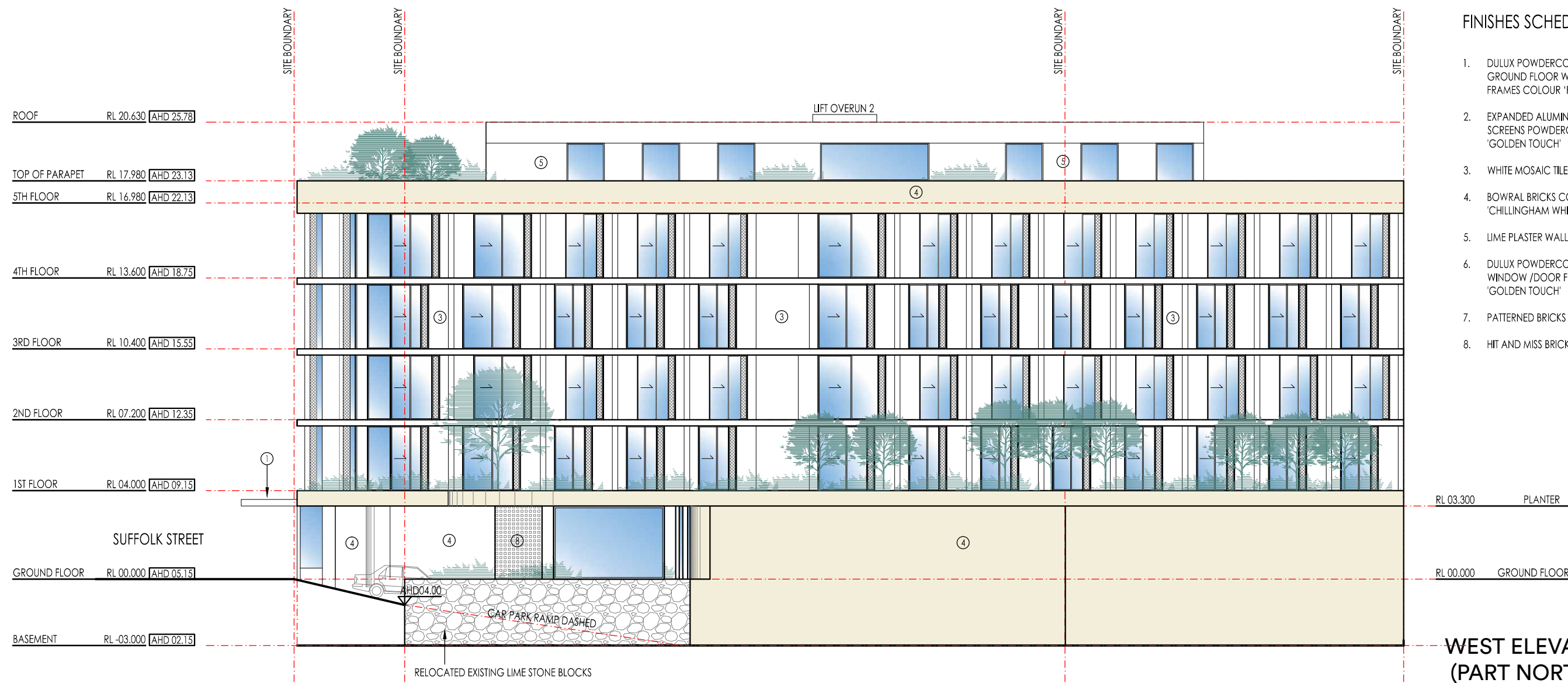
oa. 4/1 High St Fremantle
pa. PO Box 647
Fremantle WA 6959
e. hello@harrisjenkins.com



YOLK
PROPERTY
GROUP

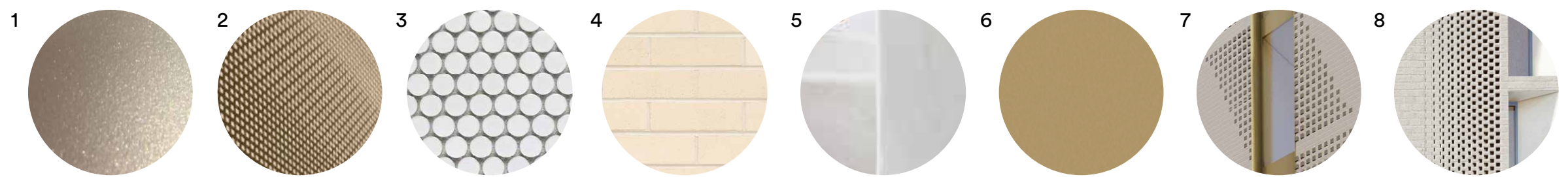
CONCEPT PLANS FOR
HOTEL DEVELOPMENT
65 SOUTH TERRACE FREMANTLE

JOB NO.	1617	ISSUE	REVISION	DRAWING
DRAWN	HJA	A	2	SK11
SCALE	AS SHOWN			
DATE	21.01.2020			
THIS DESIGN SHALL AT ALL TIMES REMAIN THE COPYRIGHT PROPERTY OF HARRIS JENKINS ARCHITECTS. WRITTEN CONSENT TO REPRODUCE THIS DESIGN IN EITHER TWO OR THREE DIMENSIONAL FORM MUST BE OBTAINED FROM HARRIS JENKINS ARCHITECTS				



FINISHES SCHEDULE


1. DULUX POWDERCOAT AWNINGS AND GROUND FLOOR WINDOW / DOOR FRAMES COLOUR 'FRESH GOLD'
2. EXPANDED ALUMINIUM SUN SHADE SCREENS POWDERCOAT COLOUR 'GOLDEN TOUCH'
3. WHITE MOSAIC TILES
4. BOWRAL BRICKS COLOUR 'CHILLINGHAM WHITE'
5. LIME PLASTER WALL FINISH
6. DULUX POWDERCOAT ALUMINIUM WINDOW / DOOR FRAMES COLOUR 'GOLDEN TOUCH'
7. PATTERNED BRICKS
8. HIT AND MISS BRICK SCREEN



**WEST ELEVATION
(PART NORTH)**
1:200

DEPARTMENT OF PLANNING, LANDS AND HERITAGE			
DATE	FILE		
03-Mar-2021	SDAU-026-20		

No.	REVISION	DATE
A2	ISSUED FOR DA	11.02.21
A1	CONSULTANT REVIEW	02.11.20



Harris — Jenkins Architects
oa. 4/1 High St Fremantle
pa. PO Box 647
Fremantle WA 6959
e. hello@harrisjenkins.com

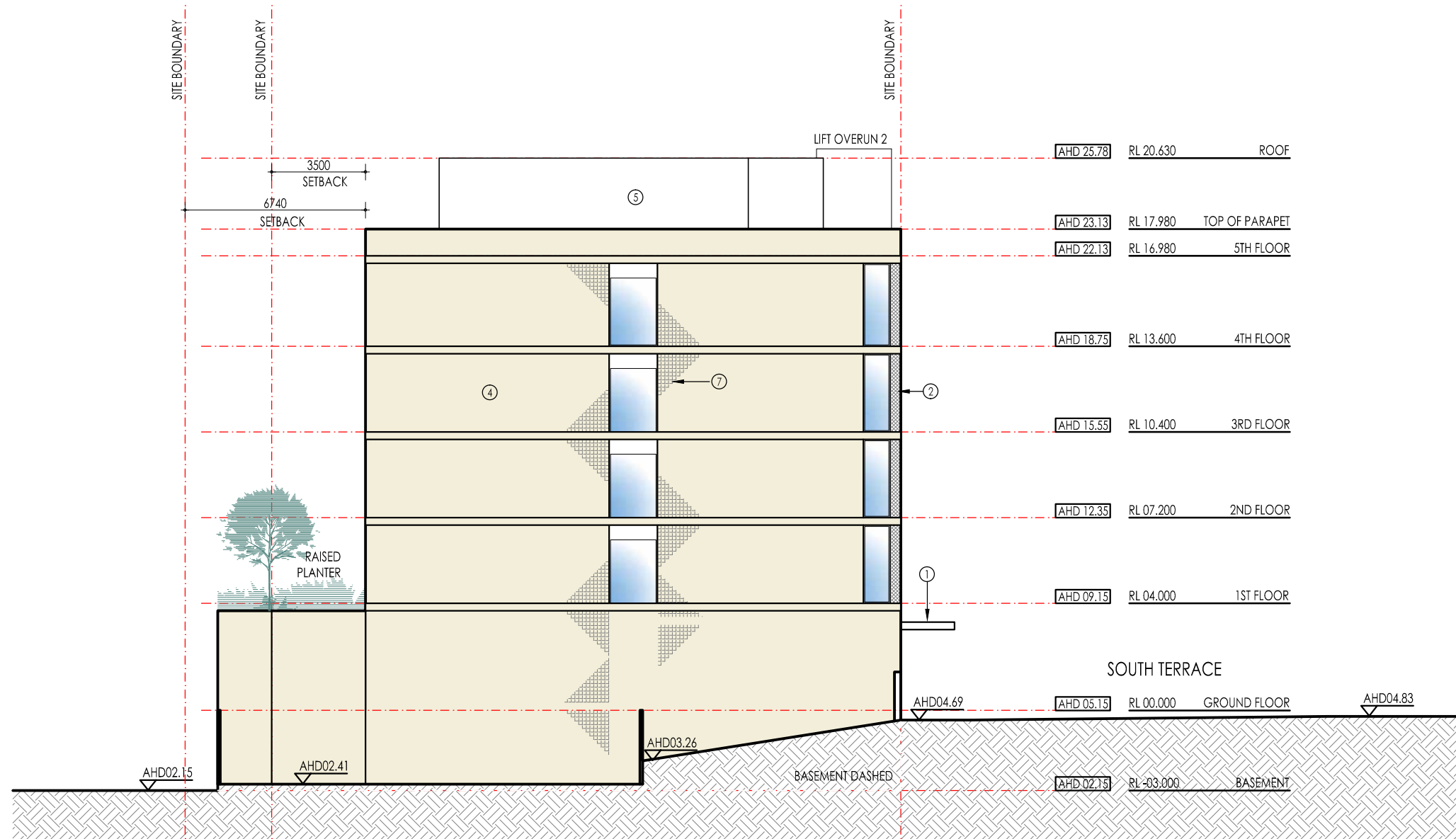


**YOLK
PROPERTY
GROUP**

CONCEPT PLANS FOR
HOTEL DEVELOPMENT
65 SOUTH TERRACE FREMANTLE

JOB NO.	1617	ISSUE	REVISION	DRAWING
DRAWN	HJA	A	2	SK12
SCALE	AS SHOWN			
DATE	21.01.2020			

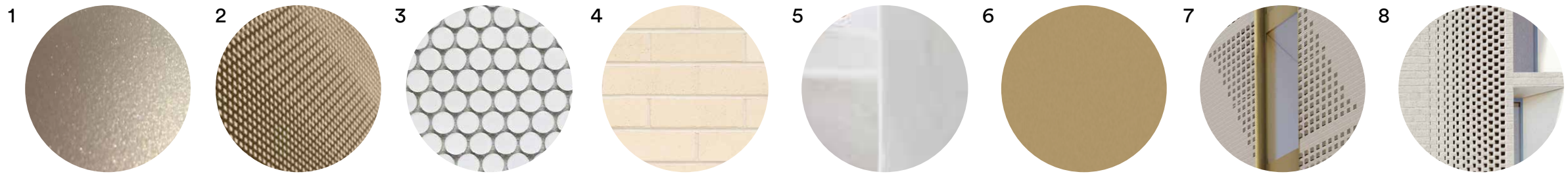
THIS DESIGN SHALL AT ALL TIMES REMAIN THE COPYRIGHT PROPERTY OF HARRIS — JENKINS ARCHITECTS. WRITTEN CONSENT TO REPRODUCE THIS DESIGN IN EITHER TWO OR THREE DIMENSIONAL FORM MUST BE OBTAINED FROM HARRIS — JENKINS ARCHITECTS



FINISHES SCHEDULE

1. DULUX POWDERCOAT AWNINGS AND GROUND FLOOR WINDOW / DOOR FRAMES COLOUR 'FRESH GOLD'
2. EXPANDED ALUMINIUM SUN SHADE SCREENS POWDERCOAT COLOUR 'GOLDEN TOUCH'
3. WHITE MOSAIC TILES
4. BOWRAL BRICKS COLOUR 'CHILLINGHAM WHITE'
5. LIME PLASTER WALL FINISH
6. DULUX POWDERCOAT ALUMINIUM WINDOW / DOOR FRAMES COLOUR 'GOLDEN TOUCH'
7. PATTERNED BRICKS
8. HIT AND MISS BRICK SCREEN

SOUTH ELEVATION
1:200



DEPARTMENT OF PLANNING, LANDS AND HERITAGE			
DATE	FILE		
03-Mar-2021	SDAU-026-20		

A2	ISSUED FOR DA	11.02.21
A1	CONSULTANT REVIEW	02.11.20
No.	REVISION	DATE

H — J A

Harris — Jenkins Architects

oa. 4/1 High St Fremantle
pa. PO Box 647
Fremantle WA 6959
e. hello@harrisjenkins.com

YOLK

PROPERTY GROUP

CONCEPT PLANS FOR
HOTEL DEVELOPMENT
65 SOUTH TERRACE FREMANTLE

JOB NO.	1617	ISSUE	REVISION	DRAWING
DRAWN	HJA	A	2	SK13
SCALE	AS SHOWN			
DATE	21.01.2020			
THIS DESIGN SHALL AT ALL TIMES REMAIN THE COPYRIGHT PROPERTY OF HARRIS — JENKINS ARCHITECTS. WRITTEN CONSENT TO REPRODUCE THIS DESIGN IN EITHER TWO OR THREE DIMENSIONAL FORM MUST BE OBTAINED FROM HARRIS — JENKINS ARCHITECTS				