

INDICATIVE ONLY.  
SUBJECT TO DETAILED DESIGN

# Signage Plan

# Florida Beach, WA

NOTE - External Signage subject to Development Approval

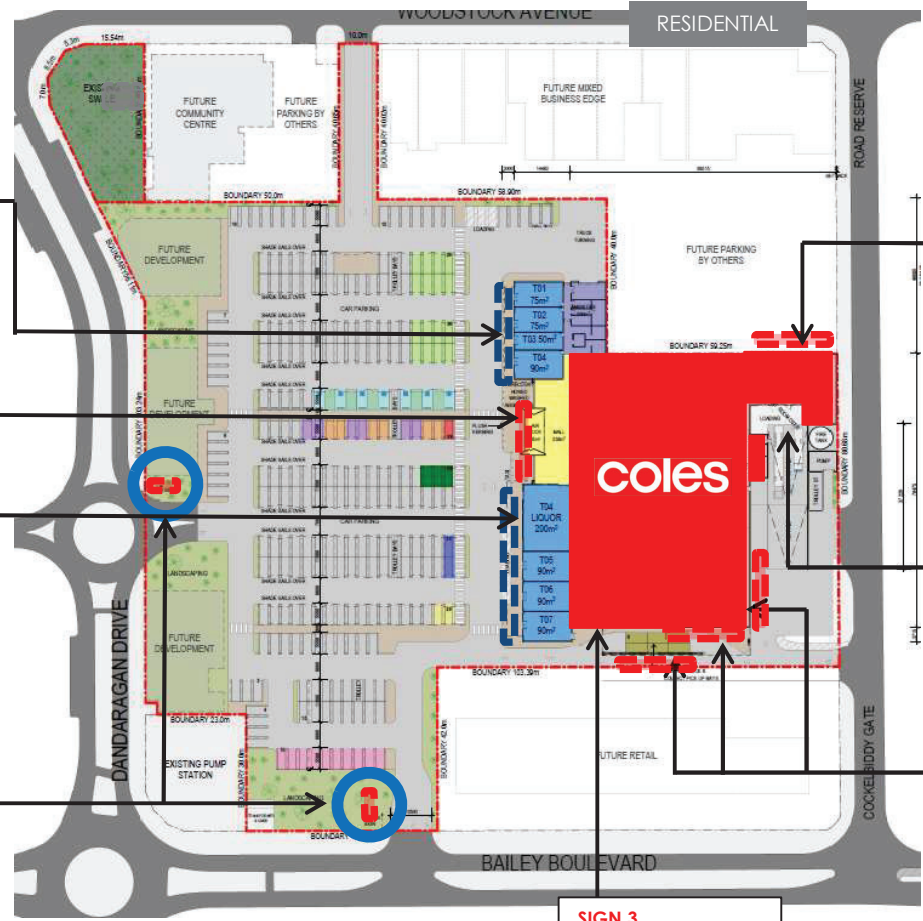
DEPARTMENT OF PLANNING, LANDS AND HERITAGE  
DATE: 18-Nov-2020 FILE: SDAU-009-20

**SIGN 7**  
Speciality Illuminated Signage To 7No tenancies Style to be confirmed.  
**SUSHI**

**SIGN 6**  
Coles Illuminated Signage  
**coles**

**SIGN 5**  
Liquorland Illuminated Signage  
**LIQUORLAND**

**SIGN 4**  
Pylon Sign with Coles Illuminated Signage  
**coles**






**SIGN 8**  
Coles Illuminated Signage  
**coles**

**SIGN 1**  
Coles receiving Sign  
**coles** Receiving

**SIGN 2**  
Coles Illuminated Signage  
**coles**

**SIGN 3**  
Click & Collect fascia signage (non-illuminated)

 Coles Illuminated External Signage
  Speciality Illuminated External
  Pylon Signage

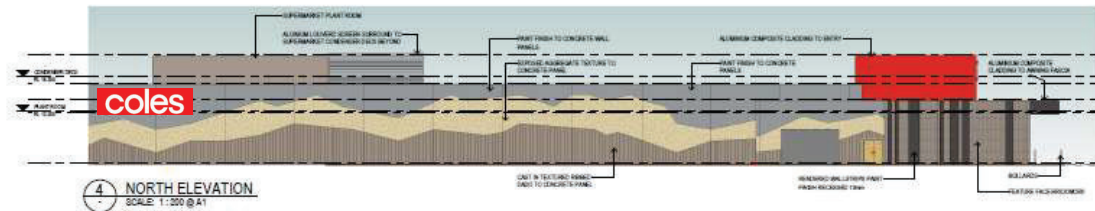
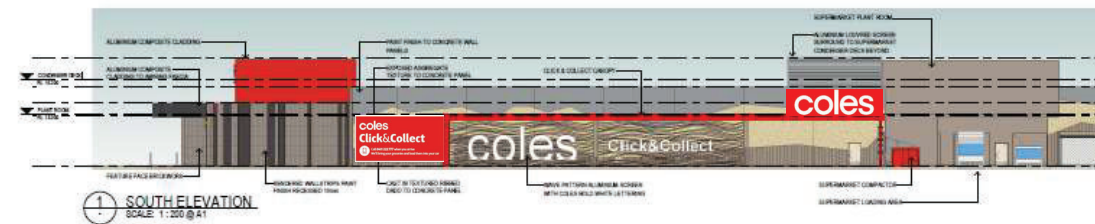
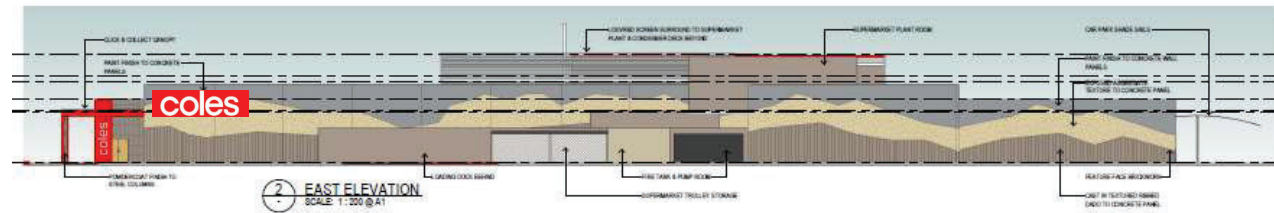


**PYLON SIGN ELEVATION**

INDICATIVE ONLY.  
SUBJECT TO DETAILED DESIGN

# Elevations

# Florida Beach, WA



PYLON SIGN ELEVATION