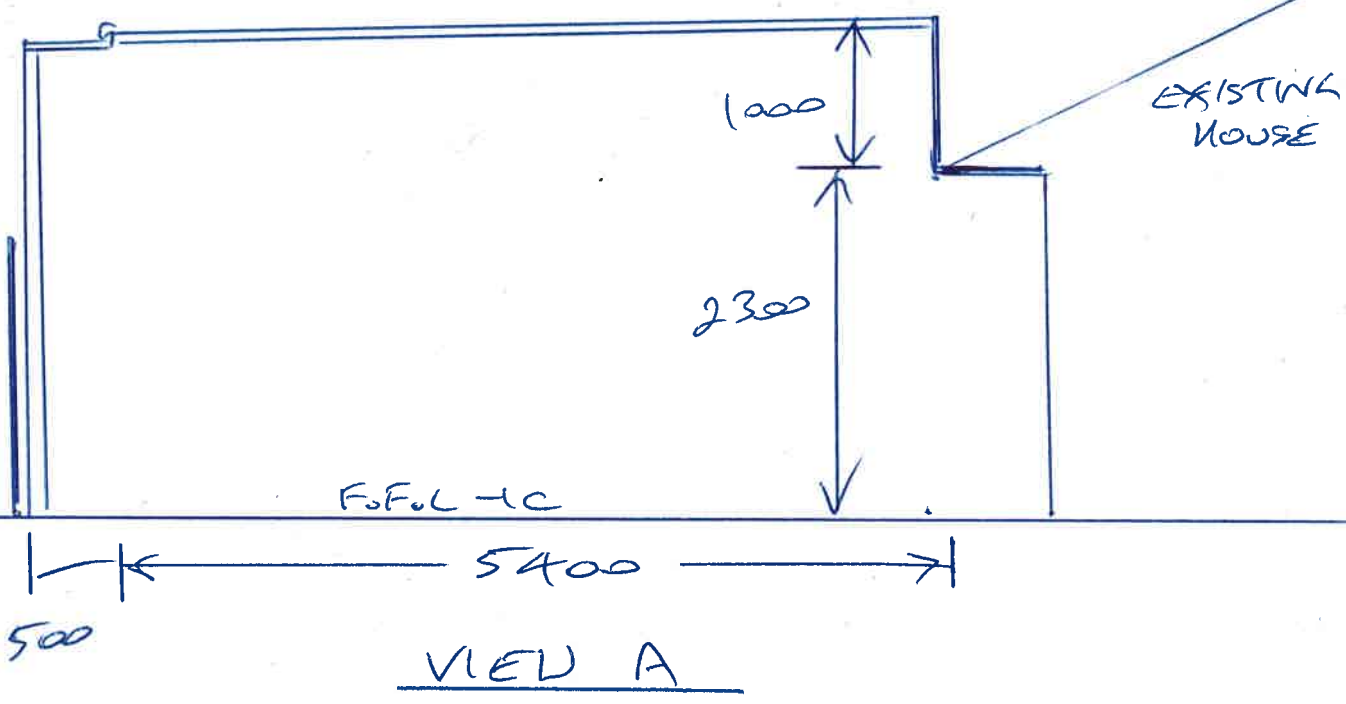
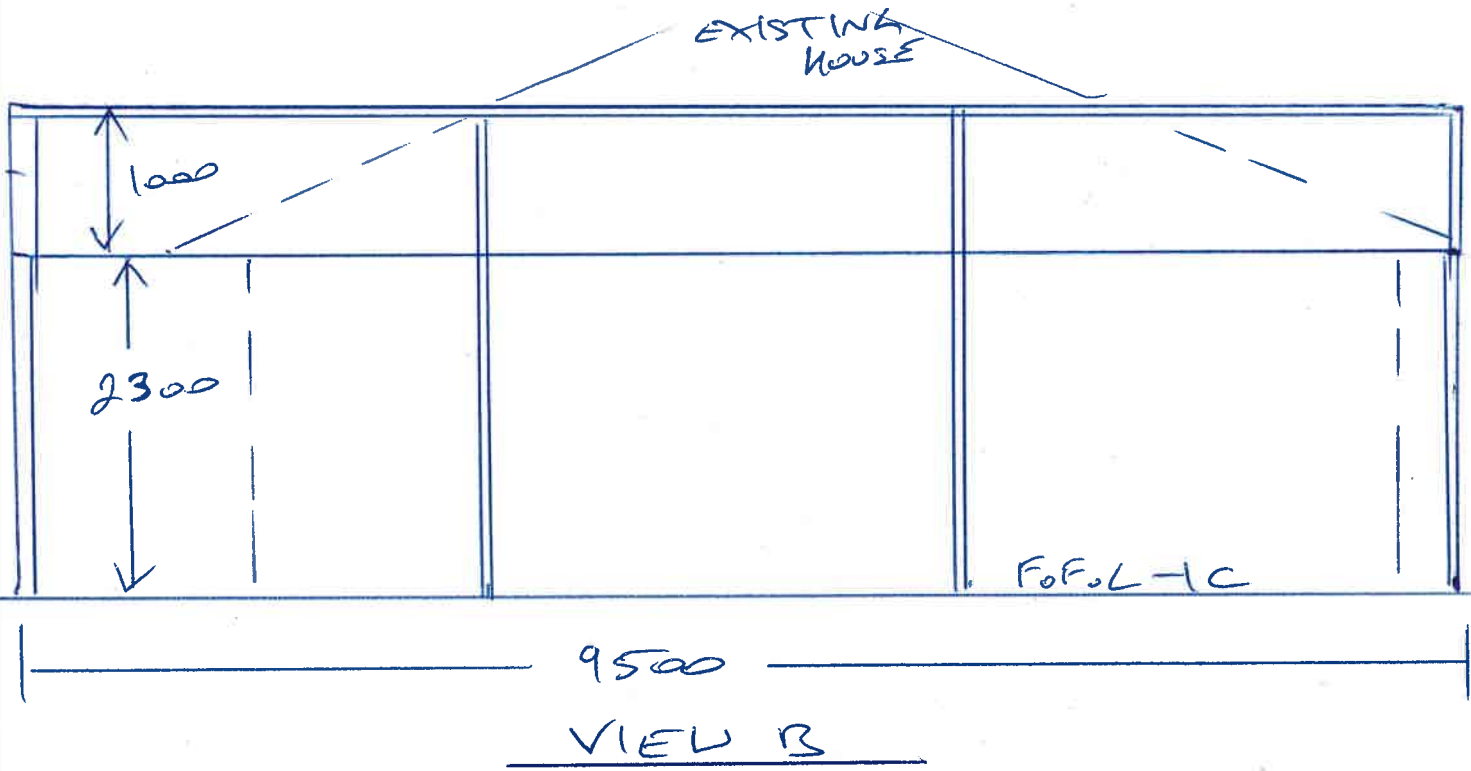


A Bignell Place, Kerne Hill

Proposed Raised Flat Carport

DEPARTMENT OF PLANNING, LANDS AND HERITAGE	
DATE	FILE
29-Nov-2021	21-50723-1

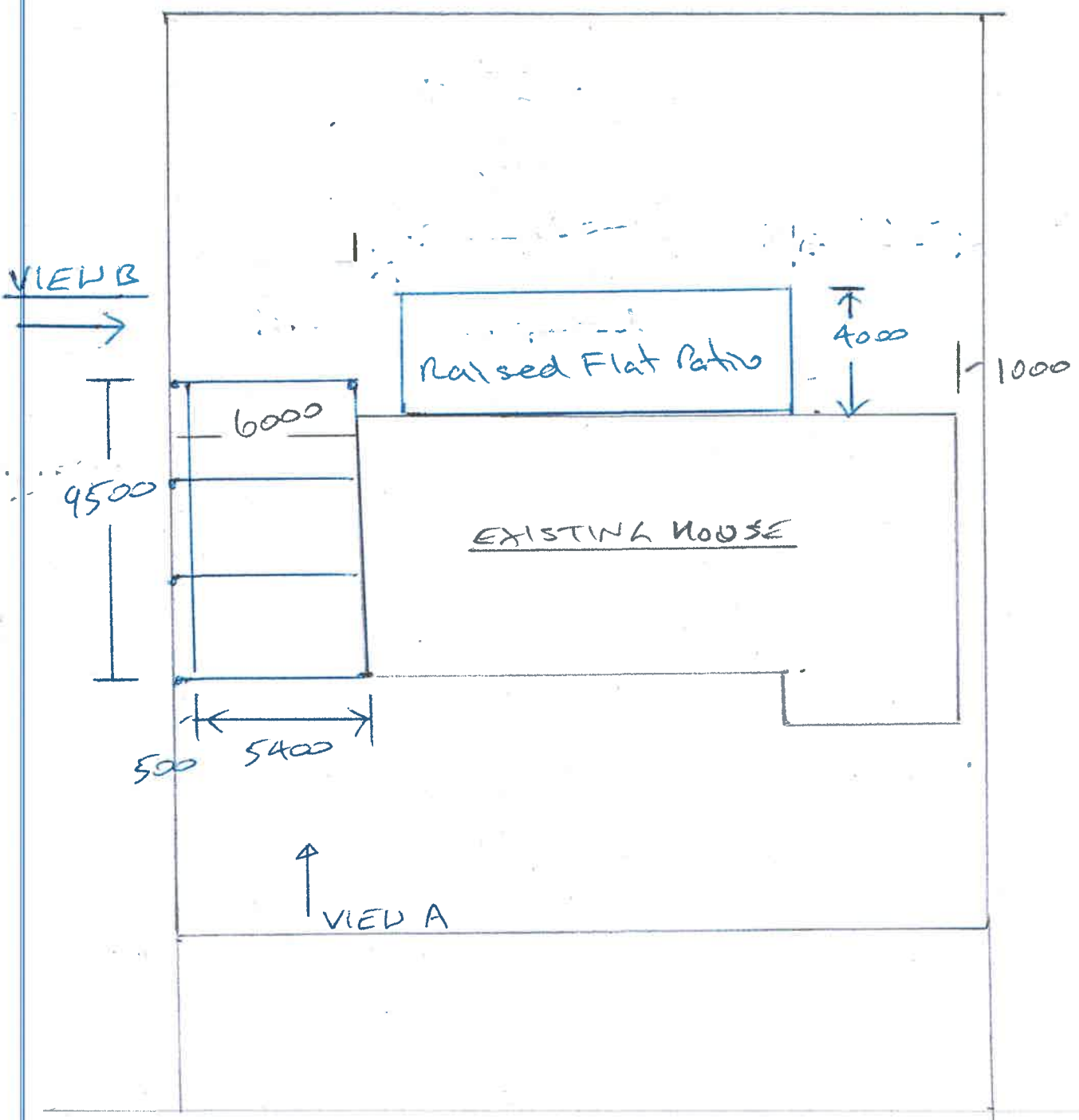


A. Bignell Place, Herne Hill

Proposed Raised Flat Carport

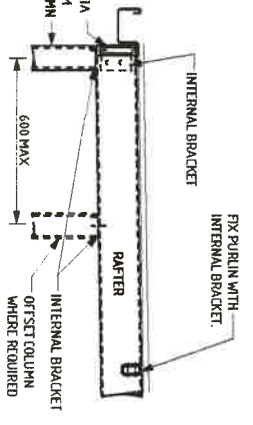
DEPARTMENT OF PLANNING, LANDS AND HERITAGE	
DATE 29-Nov-2021	FILE 21-50723-1

26 750



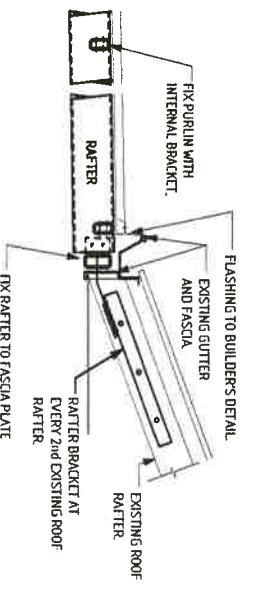
A BIGNELL PLACE

HERNE HILL



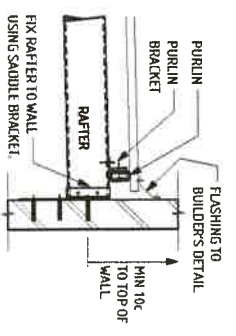
COLUMN/FASCIA BEAM/RAFTER CONNECTION

NOTE
FIX RAFTER DIRECTLY TO COLUMN WITH INTERNAL BRACKET IF NO FASCIA BEAM.



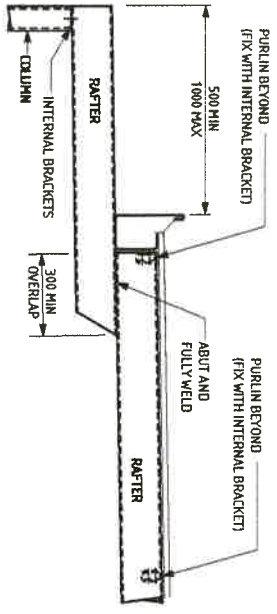
EAVES CONNECTION - STANDARD

NOTE
PURLINS MAY BE FIXED OVER RAFTERS WITH RAFTER BRACKET

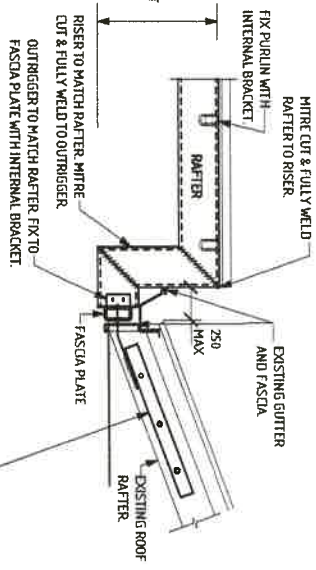


BRICK WALL CONNECTIONS (GABLE)

NOTE
PURLINS MAY BE FIXED TO FACE OF RAFTER WITH INTERNAL BRACKETS.

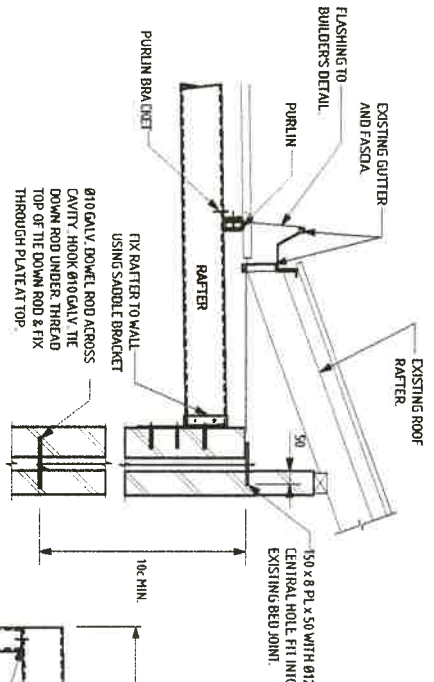


BOUNDARY SET BACK CONNECTION (DROP DOWN OPTION)
(WHERE REQUIRED TO SUIT NCC REQUIREMENTS)



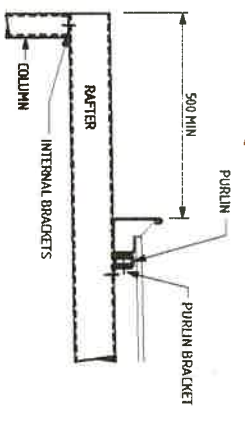
EAVES CONNECTION - WITH FASCIA RISER

NOTE
PURLINS MAY BE FIXED OVER RAFTERS WITH PURLIN BRACKET

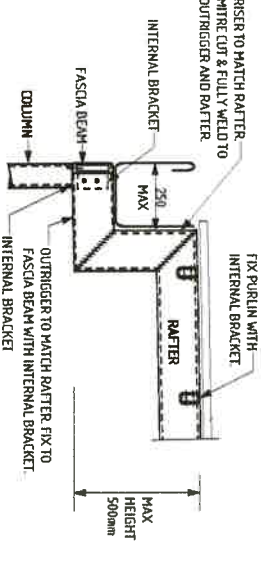


BRICK WALL CONNECTION (EAVES)

NOTE
PURLINS MAY BE FIXED TO FACE OF RAFTER WITH INTERNAL BRACKETS.

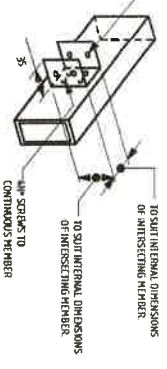
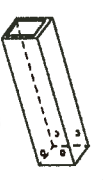
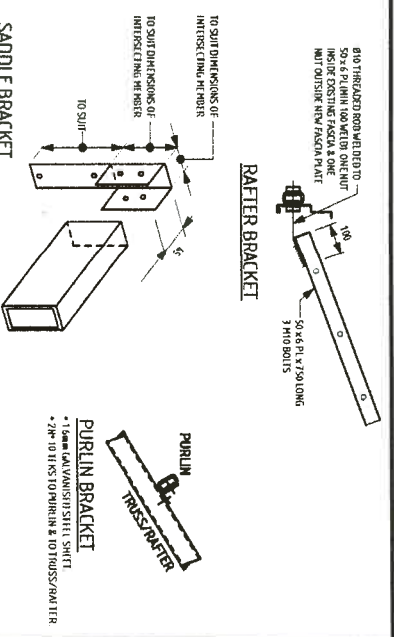


BOUNDARY SET BACK CONNECTION
(WHERE REQUIRED TO SUIT NCC REQUIREMENTS)



COLUMN/FASCIA BEAM/RAFTER CONNECTION WITH RISER

NOTE
FIX RAFTER DIRECTLY TO COLUMN WITH INTERNAL BRACKET IF NO FASCIA BEAM.



INTERNAL BRACKET

- 2x6 CALVANISED STEEL SHEET
- 2x6 SCREWS EACH SIDE OF INTERSECTING MEMBER
- TO SUIT DIMENSIONS OF INTERSECTING MEMBER
- TO SUIT INTERNAL DIMENSIONS OF INTERSECTING MEMBER

FIXING BRACKETS

BRACKET DIMENSIONS/SPACINGS TO SUIT MEMBERS BEING RIGID

SHEPPARD STEEL CONTRACTING

Patios - Fencing
Balustrade - Guard-Railing
General Fabrication & Installation
-No Job Too Difficult-

Over 40 Years Experience in Metal Products.
Qualified Tradesperson

STEEL PATIO OR CARPORT SKILLION ROOF WITH RISER OPTION)
(Midland Region A, Terrain Category 3)

PROJECT #4, BIGNELL PLACE
HERNE HILL

SHEPPARD STEEL CONTRACTING

DEPARTMENT OF PLANNING, LANDS AND HERITAGE	TITLE
DATE	29 Nov 2021
FILE	21-50723-1

STRUCterre consulting

Zeeland, PO Box 11304
1500 CA, The Netherlands
Tel: (0031) 20 658 7800
Tel: (00) 700 658 7800

SCALE: NTS
SHEET: 2 of 2
PROJECT NO: 02709

