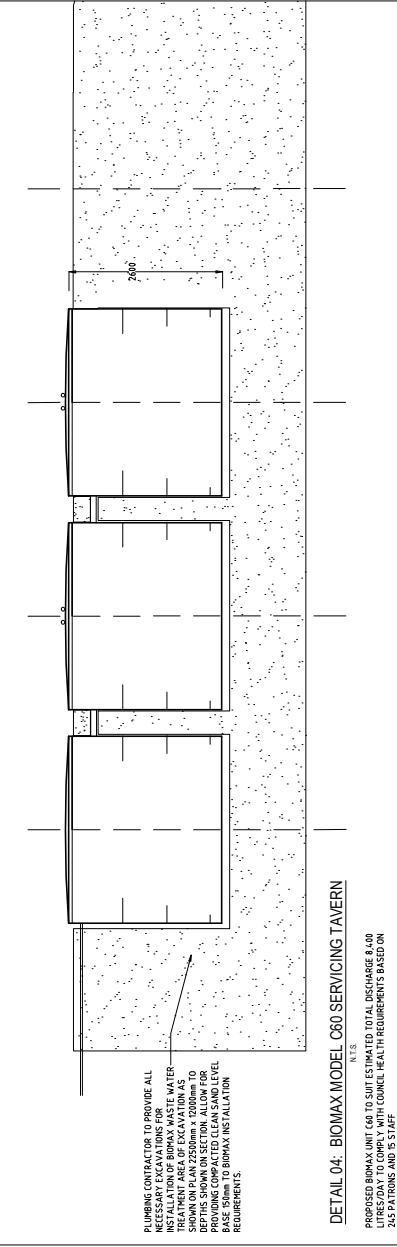
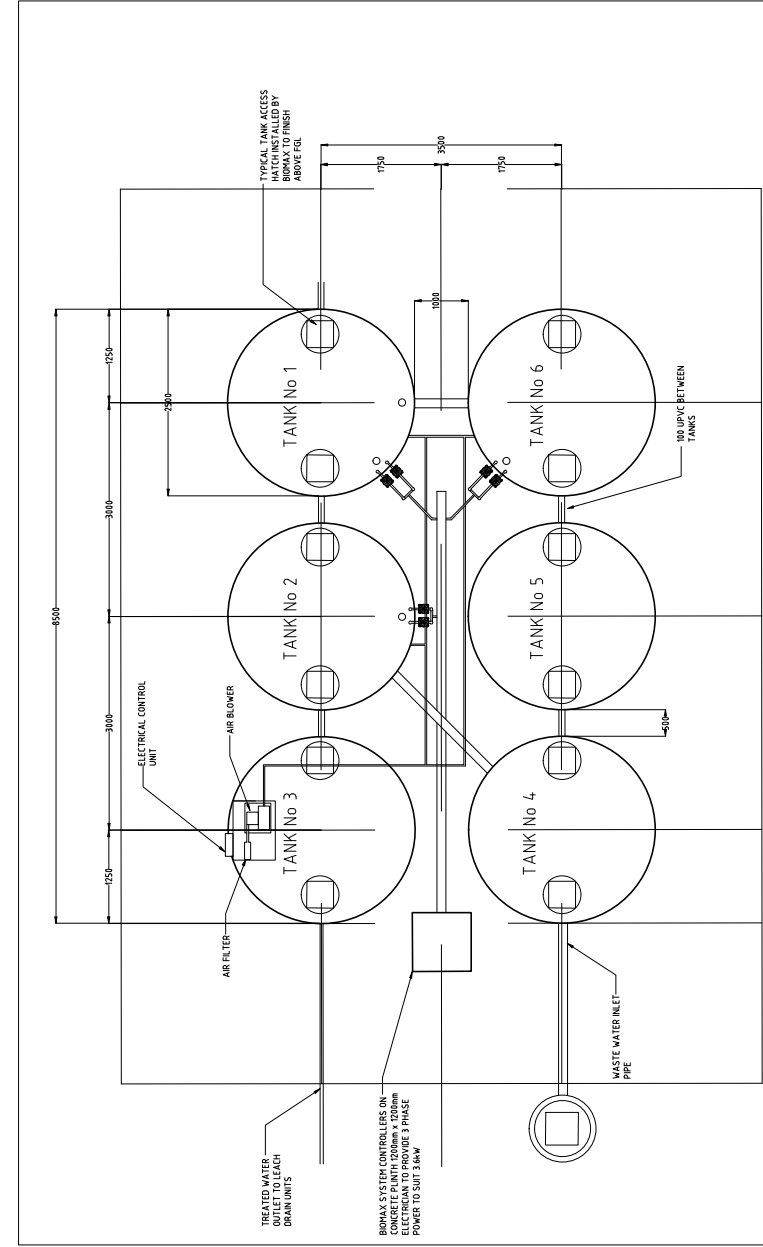


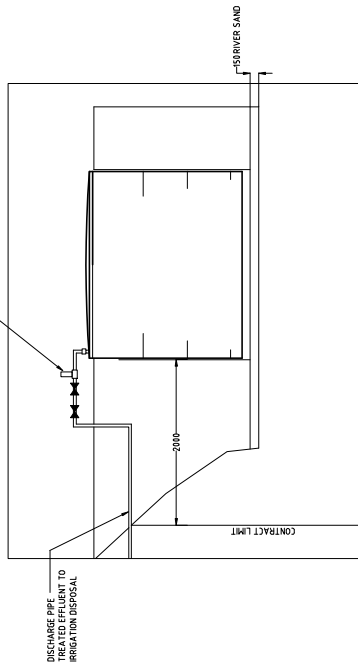
Contractor to provide all materials, labour and plant for the installation and commissioning of the Biomax Model C60. The Contractor is to ensure that the Biomax Model C60 is installed in accordance with the manufacturer's instructions and the relevant regulatory requirements. The Contractor is to ensure that the Biomax Model C60 is installed in a safe and sound manner and to ensure that the Biomax Model C60 is installed in a safe and sound manner.

AS BUILT

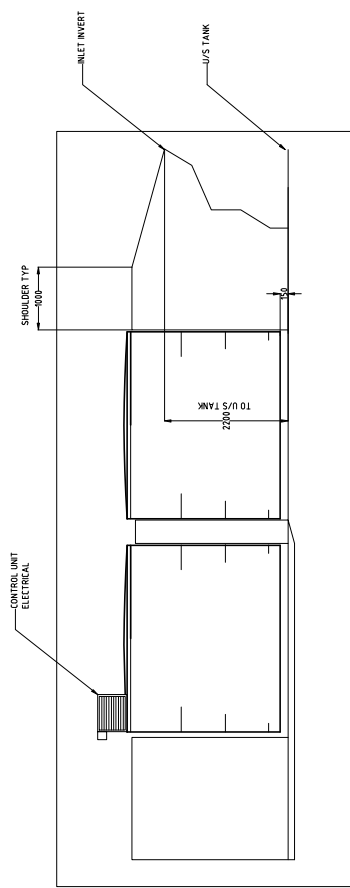
NO. RETURN
DATE
BY



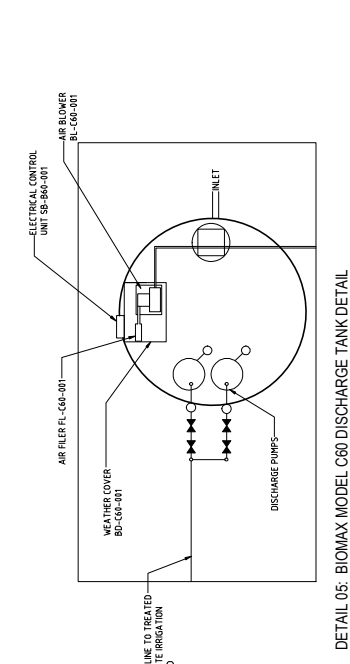
DETAIL 04: BIOMAX MODEL C60 SERVICING TAVERN
N.T.S.



DETAIL 07: BIOMAX MODEL C60 SECTIONAL ELEVATION C
N.T.S.



DETAIL 06: BIOMAX MODEL C60 SECTIONAL ELEVATION B
N.T.S.



DETAIL 05: BIOMAX MODEL C60 DISCHARGE TANK DETAIL
N.T.S.

ATU & LEACH DRAIN REQUIREMENTS FOR TAVERN

AS SUPPLEMENT TO REGULATION 29 & SCHEDULE 9 TABLE 3 -
 PERSONS DINING 245 @ 30 LITRES / PERSON = 7350
 15 STAFF @ 70 LITRES / PERSON = 1050 LITRES
 THEREFORE SIZE OF ATU = 7350 + 1050 = 8,400 LITRES
 8,400 LITRES DISTRIBUTED THROUGH LEACH DRAINS
 = 8,400 / 50 (mm/ft) = 168 / (ft) = 101 METRES OF LEACH DRAIN
 (4 x 32 METRE LENGTHS) OF BELOW GROUND LEACH DRAINS DOCUMENTED.

BIOMAX C60 WASTE WATER TREATMENT SYSTEM FOR 8,400 LITRES

ATU & LEACH DRAIN REQUIREMENTS FOR BREWERY

AS SUPPLEMENT TO REGULATION 29 & SCHEDULE 9 TABLE 3 -
 DISCHARGE AS ADVISED BY CLIENT 4000 LITRES PER BREWING CYCLE
 4000 LITRES DISTRIBUTED THROUGH EACH LEACH DRAIN
 = 4000 / 50 = 80 / (ft) = 1.6 = 48.00 METRES OF LEACH DRAIN
 (2 x 32 METRE LENGTHS) OF BELOW GROUND LEACH DRAINS.

PROPOSED BIOMAX UNIT C60 TO SUIT ESTIMATED TOTAL DISCHARGE 8,400 LITRES PER BREWING CYCLE. TO SUIT COUNCIL HEALTH REQUIREMENTS BASED ON 245 PATRONS AND 15 STAFF.

DETAIL 04: BIOMAX MODEL C60 SERVICING TAVERN
N.T.S.



CROSS DESIGN GROUP
PO BOX 2208, 220 THE PETERDALE MARKET, PH: 081 460 5074

BALEBY BREWERY
9801 WEST SWAN ROAD
HENLEY BROOK WA 6005

HYDRAULIC DETAILS PLAN
DATE: JAN 2021

SHOWN AS:
FILE: AC
DATE: JAN 2021
DRAWING NUMBER: H4701
REVISED BY: H6.02

DEPARTMENT OF PLANNING, LANDS AND HERITAGE
DATE: 30-Mar-2023
FILE: 21-50449-6

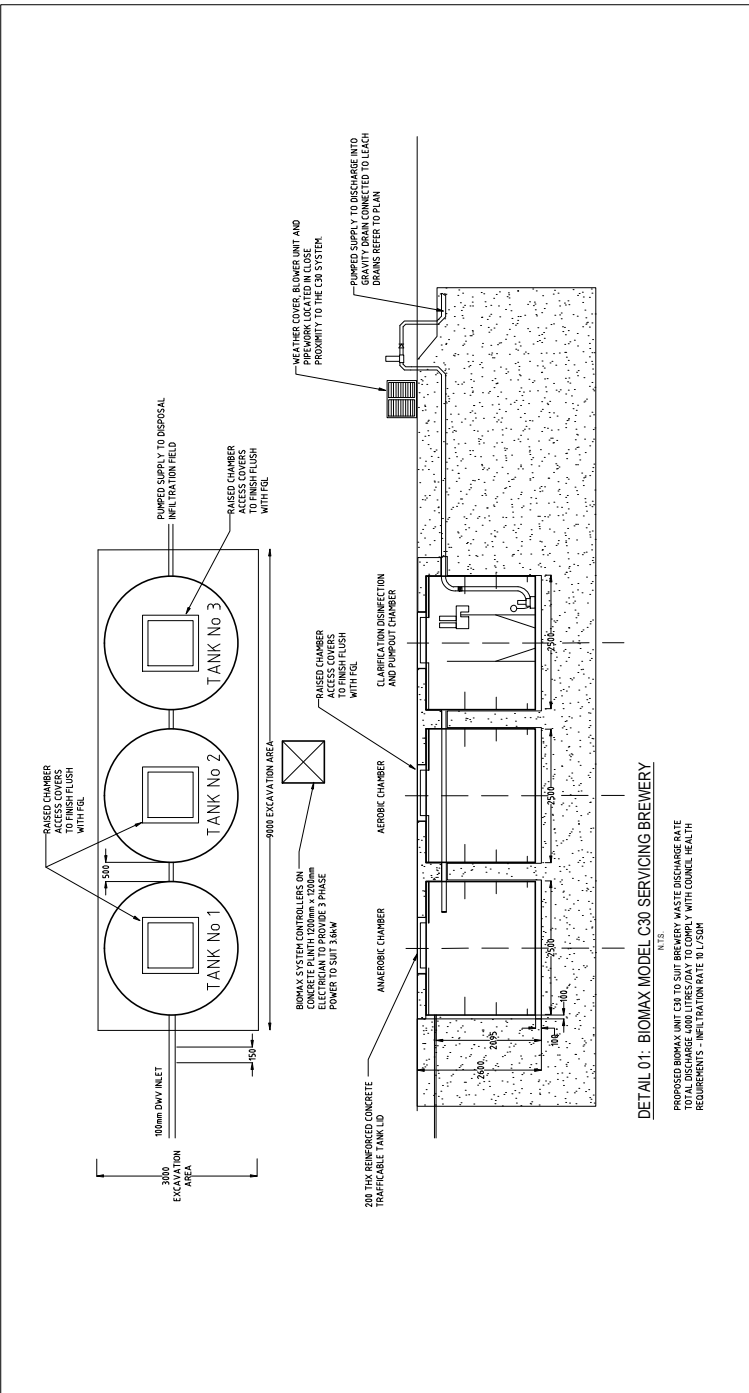
GENERAL NOTES:

- 601 PROPOSED BIOMAX WASTE WATER TREATMENT SYSTEM MODEL C30 PLUMBING CONTRACTORS TO ALLOW FOR ALL NECESSARY EXCAVATIONS FOR INSTALLATION OF BIOMAX WASTE WATER TREATMENT SYSTEM INCLUDING BUT NOT LIMITED TO THE FOLLOWING:
 1. BIOMAX CONTRACTOR TO INSTALL AND COMMISSION BIOMAX SYSTEM
 2. BIOMAX CONTRACTOR TO INSTALL IRRIGATION SYSTEM TO MEET COUNCIL REQUIREMENTS
 3. BUILDERS LICENSED ELECTRICAL CONTRACTOR ENGAGED TO PROVIDE ALL POWER SUPPLIES ALLOW FOR COORDINATION.
 4. SOIL PREPARATION AND INSTALLATION OF LEACH DRAINS
 5. SUBMISSION OF ALL DOCUMENTS AND APPLICATIONS FOR COUNCIL APPROVAL
 6. PRESSURE MAIN AND 100mm GRAVITY SEWER TO DISCHARGE INTO BIOMAX SYSTEM
- 602 PROPOSED LEACH DRAINS TO LEACH DRAINS TO MEET COUNCIL REQUIREMENTS. LEACH DRAINS TO BE COMPLETE WITH DIVERSION VALVE
- 603 BIOMAX UNIT C30 BASED ON DISCHARGE FROM BREWERY BEING 4000 LITRES PER DAY.

ATU & LEACH DRAIN REQUIREMENTS FOR BREWERY:

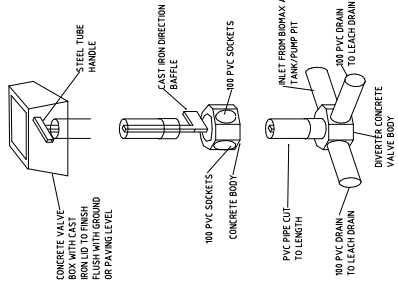
AS SUPPLEMENT TO REGULATION 29 & SCHEDULE 9 TABLE 3 - DISCHARGE AS ADVISED BY CLIENT 4000 LITRES PER BREWING CYCLE

4000 LITRES DISTRIBUTED THROUGH EACH LEACH DRAINS
 = 4000 / 50 = 80 / JEA (1.6) = 48.00 METRES OF LEACH DRAIN
 (2 x 32 METRE LENGTHS) OF BELOW GROUND LEACH DRAINS.

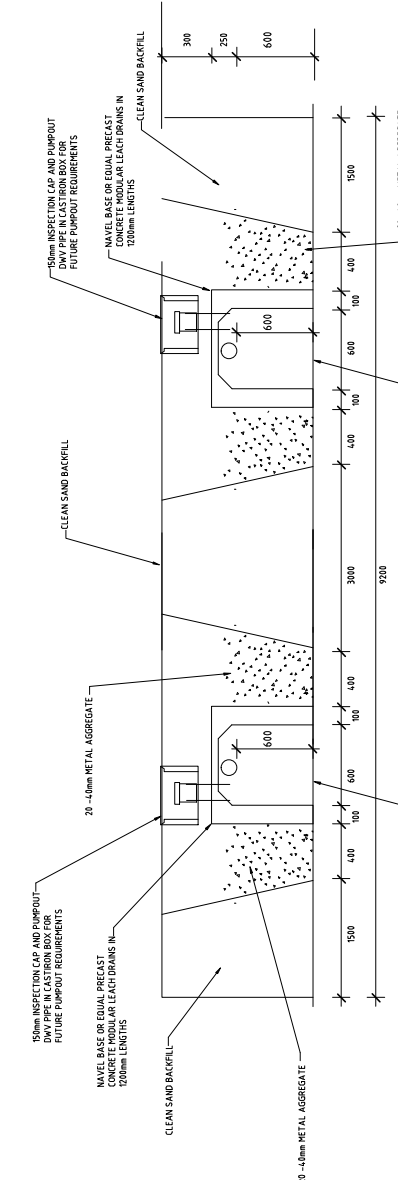


DETAIL 01: BIOMAX MODEL C30 SERVICING BREWERY

PROPOSED BIOMAX UNIT C30 TO SUIT BREWERY WASTE DISCHARGE RATE
 TOTAL DISCHARGE 4000 LITRES/DAY TO COMPLY WITH COUNCIL HEALTH REQUIREMENTS - INFILTRATION RATE 165 M³/M



DETAIL 03: DIVERSION PIT DETAIL
 N.T.S.



DETAIL 02: TYPICAL LEACH DRAIN DETAIL
 N.T.S.

NAVEL BASE CONCRETE MODULAR LEACH DRAINS IN 200mm LENGTHS HEALTH DEPARTMENT APPROVED WITH INFILTRATIVE RATE 165 M³/M